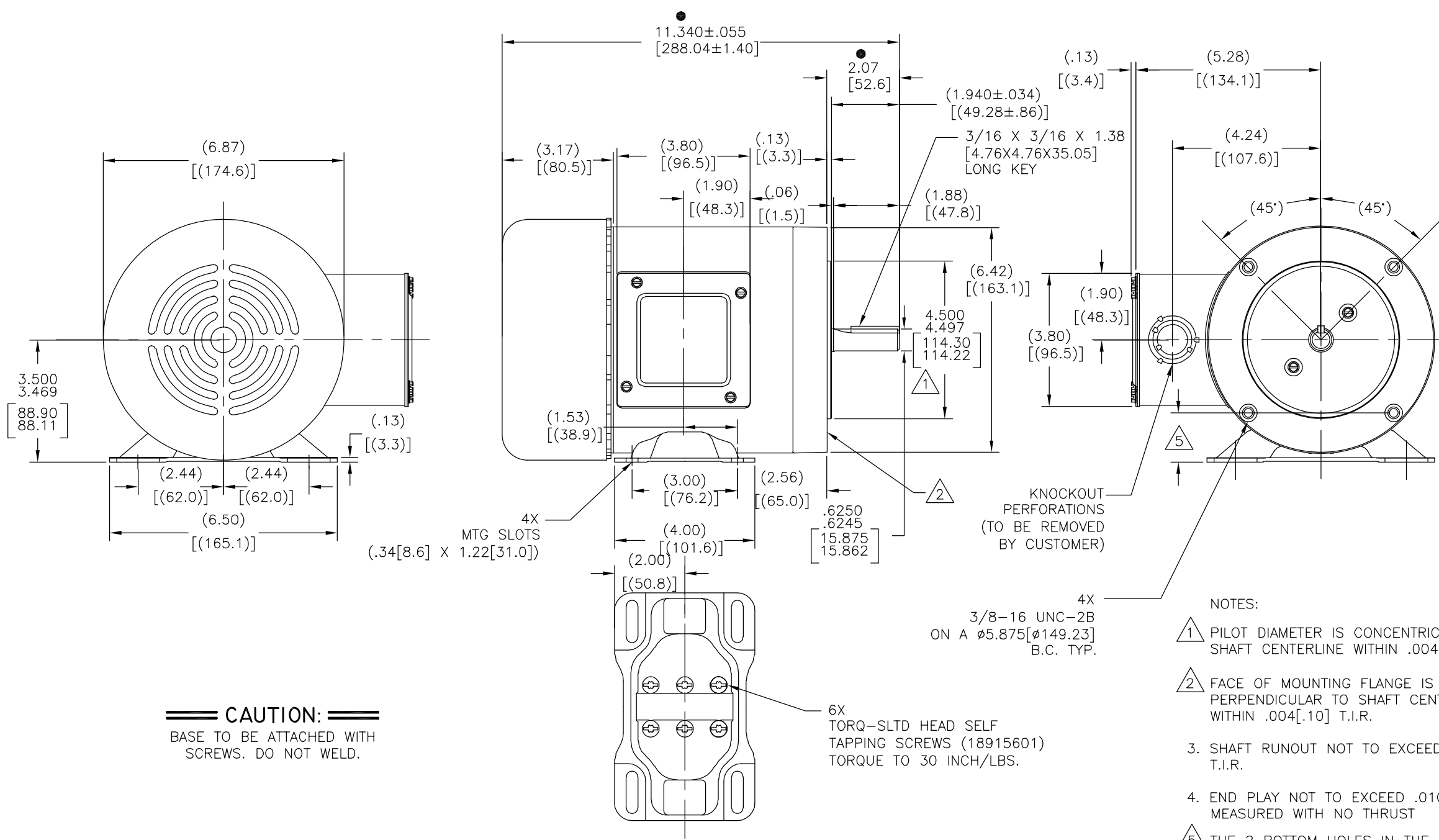


REV	ECO	REV BY	DATE	APPD	DATE
B	0025378	I. ORTIZ	04-13-2012	D. BALDERRAMA	04-13-2012



CAUTION:
BASE TO BE ATTACHED WITH SCREWS. DO NOT WELD.

- NOTES:
- 1 PILOT DIAMETER IS CONCENTRIC WITH SHAFT CENTERLINE WITHIN .004[.10] T.I.R.
 - 2 FACE OF MOUNTING FLANGE IS PERPENDICULAR TO SHAFT CENTERLINE WITHIN .004[.10] T.I.R.
 - 3. SHAFT RUNOUT NOT TO EXCEED .002[.05] T.I.R.
 - 4. END PLAY NOT TO EXCEED .010[.25] MEASURED WITH NO THRUST
 - 5. THE 2 BOTTOM HOLES IN THE MTG. FLANGE ARE PARALLEL FROM THE BOTTOM OF THE FEET WITHIN .030[.76].

● = CRITICAL DIMENSION

GEOMETRIC CHARACTERISTICS & SYMBOLS

- ▭ FLATNESS
- STRAIGHTNESS
- ∠ ANGULARITY
- ⊥ PERPENDICULARITY (SQUARENESS)
- // PARALLELISM
- ROUNDNESS (CIRCULARITY)
- ⊘ CYLINDRICITY
- △ PROFILE OF ANY SURFACE
- ∩ PROFILE OF ANY LINE
- ↗ RUNOUT
- ⊕ TRUE POSITION
- ◎ CONCENTRICITY
- ≡ SYMMETRY

ASME Y14.5M 1994

UNLESS OTHERWISE SPECIFIED DIM. TOLERANCES ARE AS FOLLOWS:

INCH	±.1	±.02	±.005	±.0005
mm	±0.5	±0.13	±0.013	

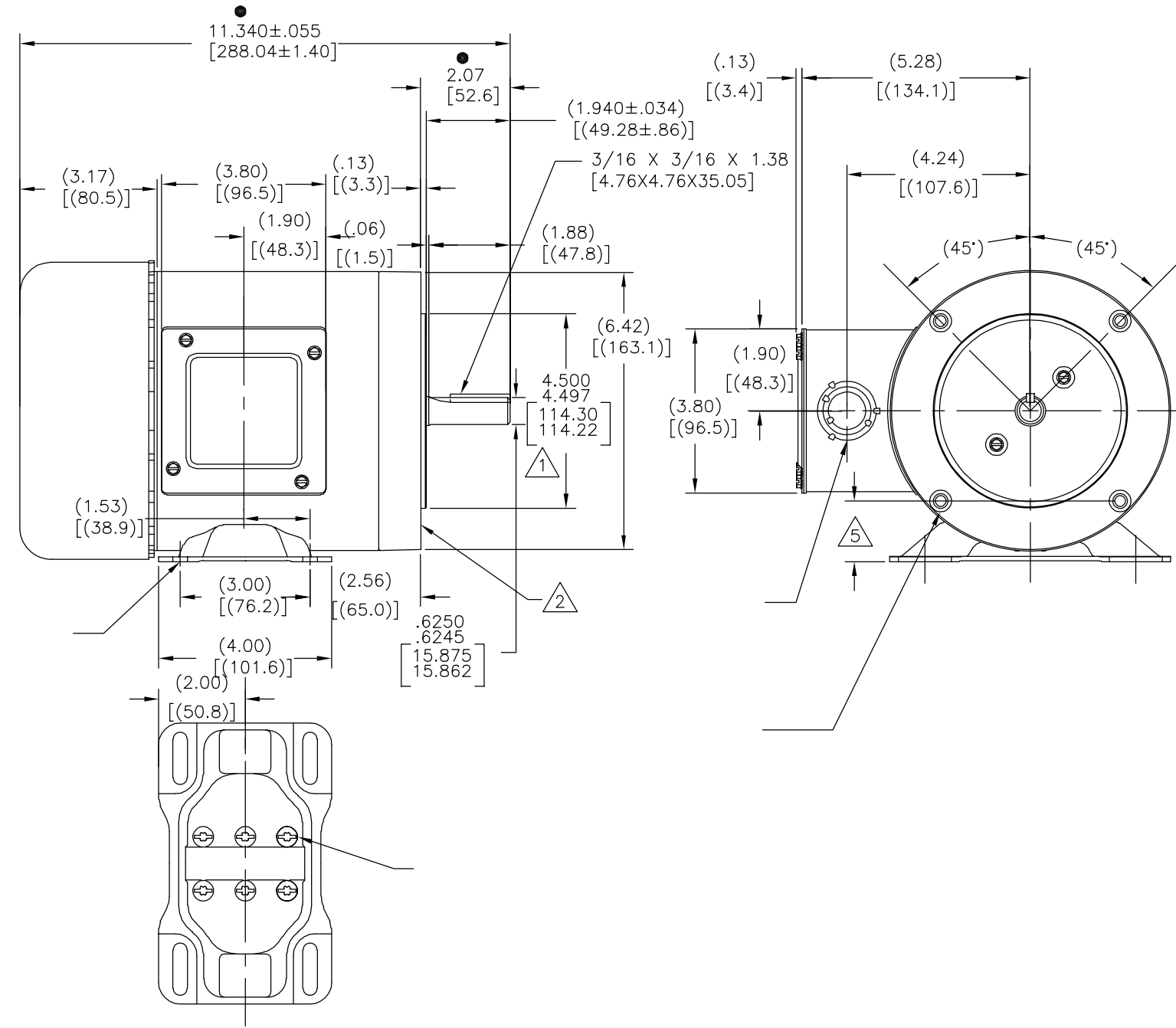
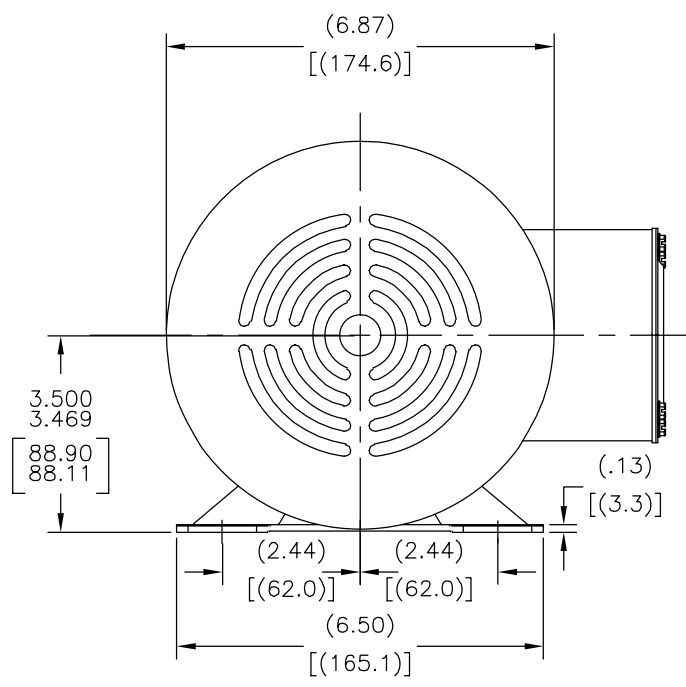
ANG. ±.50 DEG
REMOVE BURRS & BREAK SHARP EDGES:
INCH .003-.015 mm 0.1-0.4
CORNER FILLETS TO:
INCH .020 mm 0.5
MACHINE SURFACES:
INCH 125 mm 3.2

METRIC DIMS. SHOWN IN [BRACKETS]

DR BY:	D. ZHANG	05-25-2011
APPD:	BAOSHEN	05-25-2011
THIRD ANGLE PROJECTION		EDS DATE 11-11-2011 FORMAT REV G
CONFIDENTIAL: THIS DRAWING AND ITS INFORMATION ARE THE EXCLUSIVE AND CONFIDENTIAL PROPERTY OF REGAL-BELOIT CORPORATION AND ARE NOT TO BE DISCLOSED, DUPLICATED, DISTRIBUTED OR OTHERWISE USED WITHOUT THE WRITTEN CONSENT OF REGAL-BELOIT CORPORATION. -ALL RIGHTS RESERVED.		

DESCRIPTION OUTLINE	
SIZE C	DWG NO H1007
SCALE NONE	SHEET 1

REVISION:	ECO	REVISADO POR:	FECHA:	APROBADO POR:	FECHA:
B	0025378	I. ORTIZ	04-13-2012	D. BALDERRAMA	04-13-2012

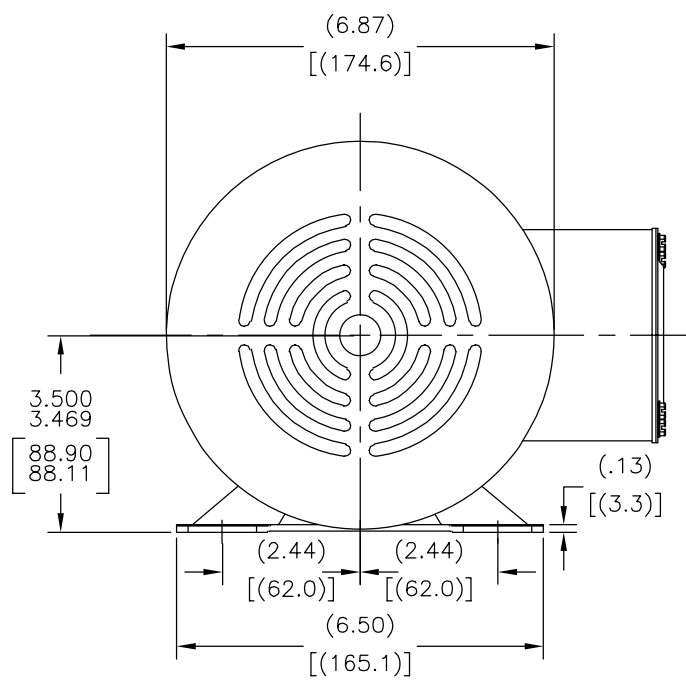


<p>CARACTERISTICAS DE GEOMETRIA Y SIMBOLOS</p> <ul style="list-style-type: none"> ▭ PLANICIDAD - RECTITUD ∠ ANGULARIDAD ⊥ PERPENDICULARIDAD (A ESCUADRA) // PARALELISMO ○ REDONDEZ (CIRCULARIDAD) ⊘ CILINDRICIDAD △ PERFIL DE CUALQUIER SUPERFICIE ∧ PERFIL DE CUALQUIER LINEA ↑ VARIACION ⊕ POSICION REAL ◎ CONCENTRICIDAD = SIMETRIA <p>ASME Y14.5M 1994</p>	<p>A MENOS QUE SE ESPECIFIQUE DE OTRA MANERA, LAS TOLERANCIAS DE LAS DIMS; SON LAS SIGUIENTES:</p> <p>xx xxx xxxx</p> <p>PULG ±.1 ±.02 ±.005 ±.0005</p> <p>mm ±0.5 ±0.13 ±0.013</p> <p>ANG. ± 50 GRADOS</p> <p>ELIMINAR REBABAS Y ORILLAS FILOSAS DEL BORDE.</p> <p>PULG .003-.015 mm 0.1-0.4</p> <p>FILETEAR ESQUINA: PULG .020 mm 0.5</p> <p>MAQUINAR SUPERFICIES</p> <p>PULG 125 mm .32</p> <p>DIMS METRICAS MOSTRADAS [PARENTESIS]</p>	<p>DIBUJADO POR:</p> <p>D. ZHANG</p> <p>05-25-2011</p>	<p>DESCRIPCION:</p> <p>OUTLINE</p>
		<p>APROBADO POR:</p> <p>BAOSHEN</p> <p>05-25-2011</p>	
<p>CONFIDENCIAL: ESTE DIBUJO Y SU INFORMACION SON PROPIEDAD DE USO EXCLUSIVO Y CONFIDENCIAL DE REGAL-BELOIT CORPORATION. Y NO DEBERAN SER REVELADOS, DUPLICADOS, DISTRIBUIDOS O USARSE DE OTRA MANERA SIN EL CONSENTIMIENTO ESCRITO DE REGAL-BELOIT CORPORATION. -TODOS LOS DERECHOS RESERVADOS.</p>		<p>TAMAÑO: C</p>	<p>NUMERO DE DIBUJO:</p> <p>H1007</p>
		<p>ESCALA: NONE</p>	<p>HOJA: 1</p>

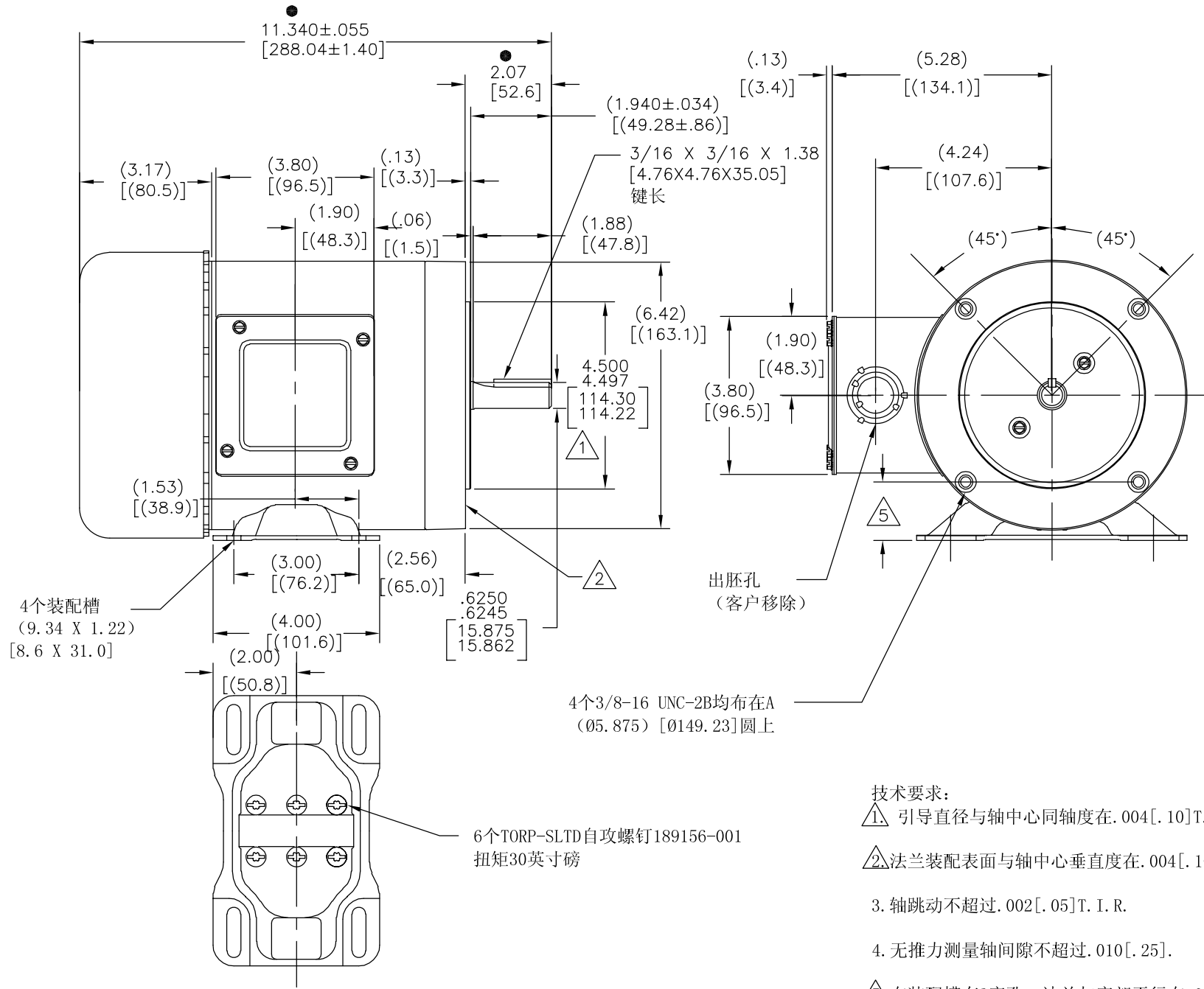
版本	ECO	编制	日期	批准	日期
B	0025378	I. ORTIZ	04-13-2012	D. BALDERRAMA	04-13-2012

D
C
B
A

D
C
B
A



警告
底座是用螺钉安装的，不是焊接的。



4个3/8-16 UNC-2B均布在A
(Ø.875) [Ø149.23]圆上

6个TORP-SLTD自攻螺钉189156-001
扭矩30英寸磅

出胚孔
(客户移除)

- 技术要求:
- 1. 引导直径与轴中心同轴度在.004[.10]T. I. R. 内.
 - 2. 法兰装配表面与轴中心垂直度在.004[.10]T. I. R. 内.
 - 3. 轴跳动不超过.002[.05]T. I. R.
 - 4. 无推力测量轴间隙不超过.010[.25].
 - 5. 在装配槽有2底孔。法兰与底部平行在.030[.76]内.

● = 关键尺寸

形位公差 □ 平面度 — 直线度 < 倾斜度 ⊥ 垂直度 // 平行度 ○ 圆度 ⊙ 圆柱度 △ 面轮廓度 ⊖ 线轮廓度 ↗ 圆跳动 ⊕ 位置度 ⊗ 同轴度 ≡ 对称度	除另有注明 尺寸公差如下: 英寸 X XX XXX XXXX 毫米 ±.1 ±.02 ±.005 ±.0005 毫米 ±0.5 ±0.13 ±0.013 角度 ±.50 度 清理毛刺和尖棱 英寸 .003-.015 毫米 0.1-0.4 内圆角 英寸 .020 毫米 0.5 表面粗糙度 英制 125 米制 3.2 米制尺寸显示在 []	绘图: D. ZHANG 批准: BAOSHEN	05-25-2011 05-25-2011	名称 REGAL-BELOIT CORPORATION OUTLINE
		第三角投影	图纸格式发布日期 11-11-2011 图纸格式版本 G	

A

A

4

3

2

1

ASME Y14.5M 1994