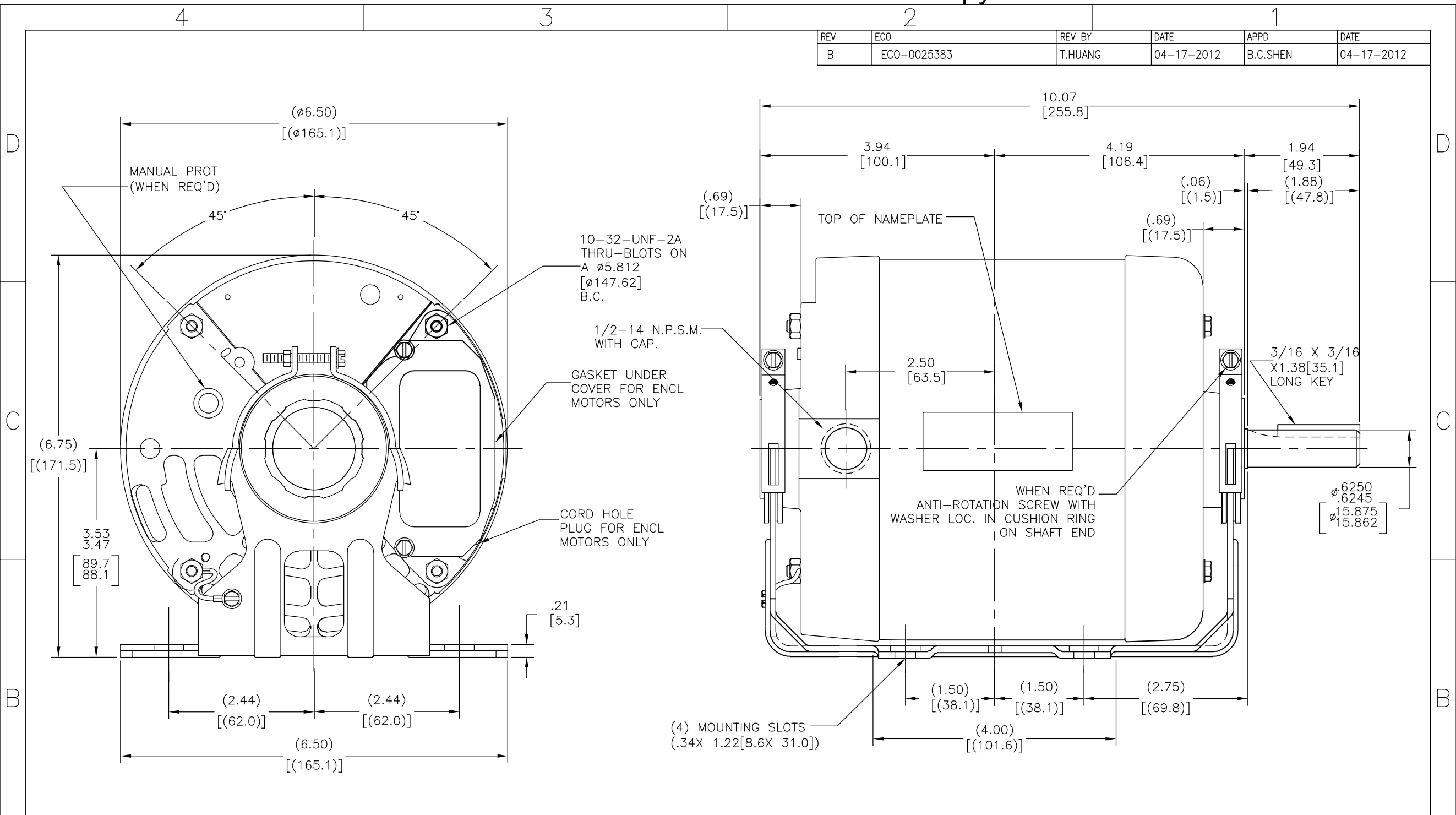


REV	ECO	REV BY	DATE	APPD	DATE
B	ECO-0025383	T.HUANG	04-17-2012	B.C.SHEN	04-17-2012



ALL DIMENSIONS SHOWN IN PARENTHESIS ARE REFERENCE DIMENSIONS.
ALL OTHER DIMENSIONS ARE TOLERANCED PER THE FOLLOWING CHART
UNLESS OTHERWISE SPECIFIED.

- "C" DIM. = +/- .055[1.40]
- SHAFT EXT. = +/- .034[.86]
- LEAD LENGTHS = +/- 1.00[25.4]
- EXTENDED THRU-BOLTS = +/- .050[12.70]
- ANGULAR DIMS = +/- 2 DEGS.

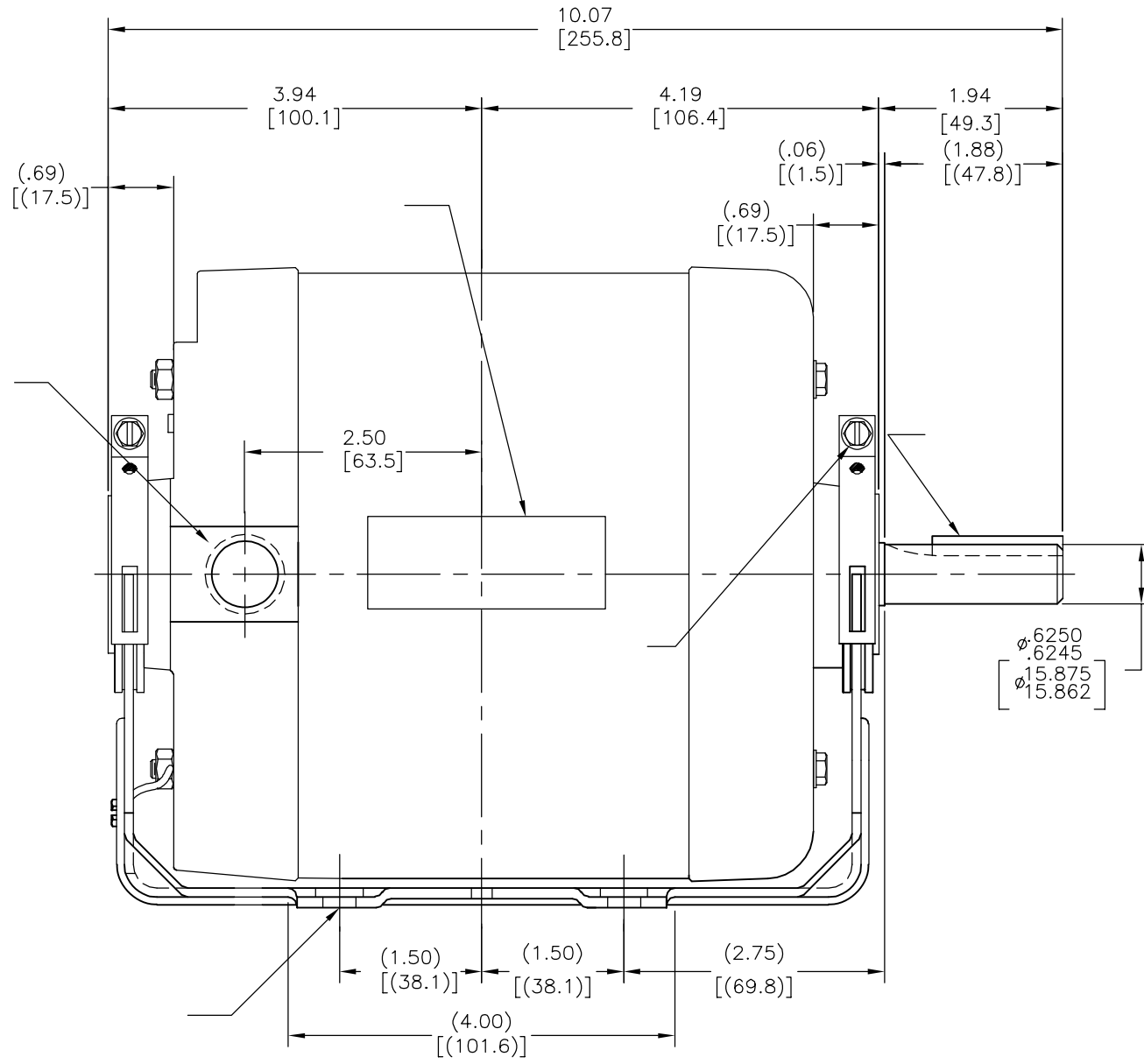
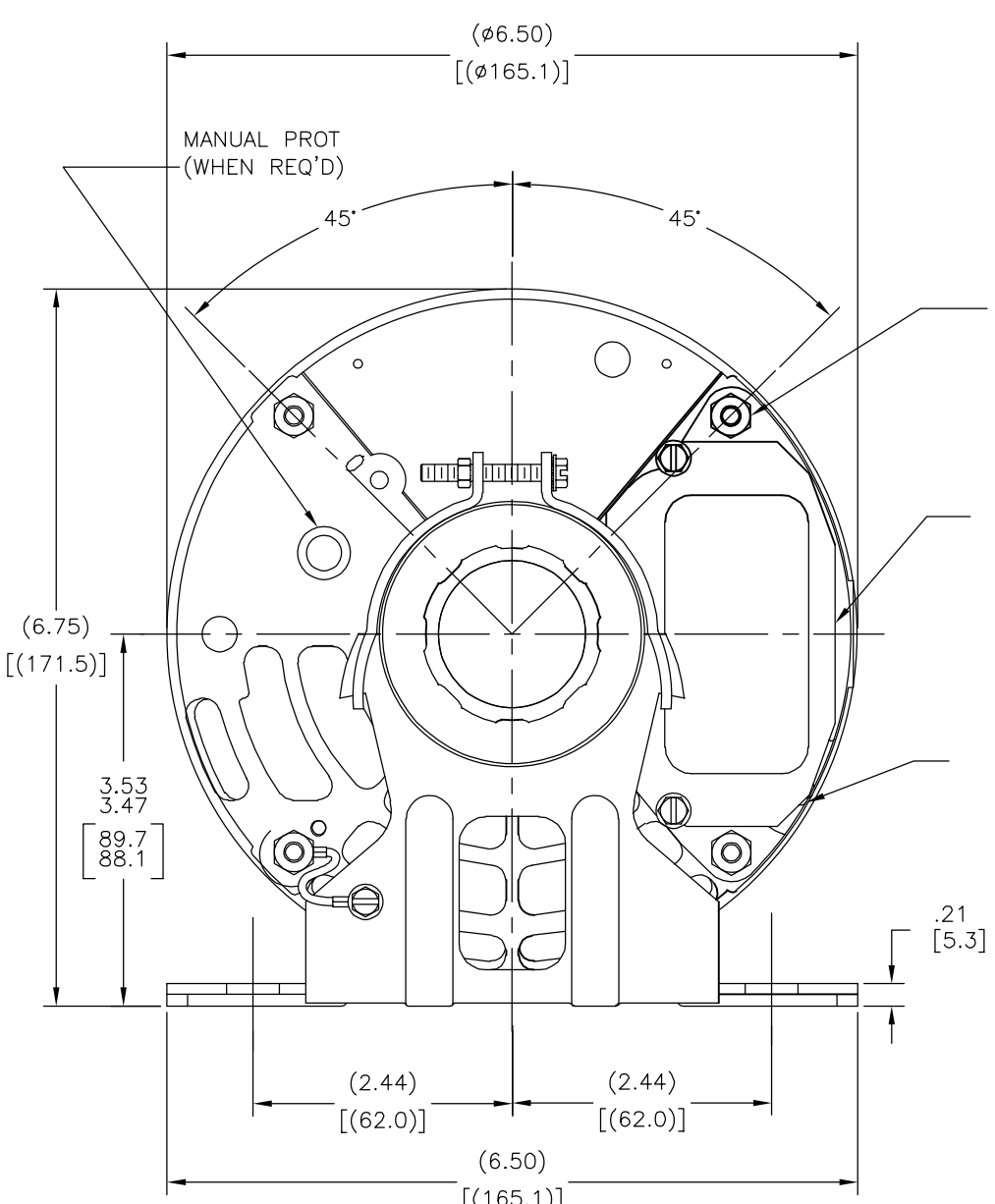
GEOMETRIC CHARACTERISTICS & SYMBOLS	
\square FLATNESS	UNLESS OTHERWISE SPECIFIED DIM. TOLERANCES ARE AS FOLLOWS:
- STRAIGHTNESS	INCH X XX XXX XXXX
\sphericalangle ANGULARITY	mm ±0.1 ±0.02 ±0.005 ±0.0005
\perp PERPENDICULARITY (SQUARENESS)	mm ±0.5 ±0.13 ±0.013
\parallel PARALLELISM	ANG. ±.50 DEG
\bigcirc ROUNDNESS (CIRCULARITY)	REMOVE BURRS & BREAK SHARP EDGES:
--- CYLINDRICITY	INCH .003-.015 mm 0.1-0.4
\triangle PROFILE OF ANY SURFACE	CORNER FILLETS TO:
\curvearrowright PROFILE OF ANY LINE	INCH .020 mm 0.5
--- RUNOUT	MACHINE SURFACES:
\oplus TRUE POSITION	INCH 125 mm 3.2
\odot CONCENTRICITY	
\equiv SYMMETRY	

OR BY: Caddie	10-20-2010
APPD: Coloma.Tony	10-20-2010
THIRD ANGLE PROJECTION	EDS DATE 11-11-2011 FORMAT REV G
CONFIDENTIAL: THIS DRAWING AND ITS INFORMATION ARE THE EXCLUSIVE AND CONFIDENTIAL PROPERTY OF REGAL-BELOIT CORPORATION AND ARE NOT TO BE DISCLOSED, DUPLICATED, DISTRIBUTED OR OTHERWISE USED WITHOUT THE WRITTEN CONSENT OF REGAL-BELOIT CORPORATION. -ALL RIGHTS RESERVED.	

REGAL-BELOIT CORPORATION	
DESCRIPTION: OUTLINE	
SIZE: C	DWG NO: H957L
SCALE: NONE	SHEET 1

ASME Y14.5M 1994	
METRIC DIMS. SHOWN IN [BRACKETS]	

REVISION:	ECO	REVISADO POR:	FECHA:	APROBADO POR:	FECHA:
B	ECO-0025383	T.HUANG	04-17-2012	B.C.SHEN	04-17-2012



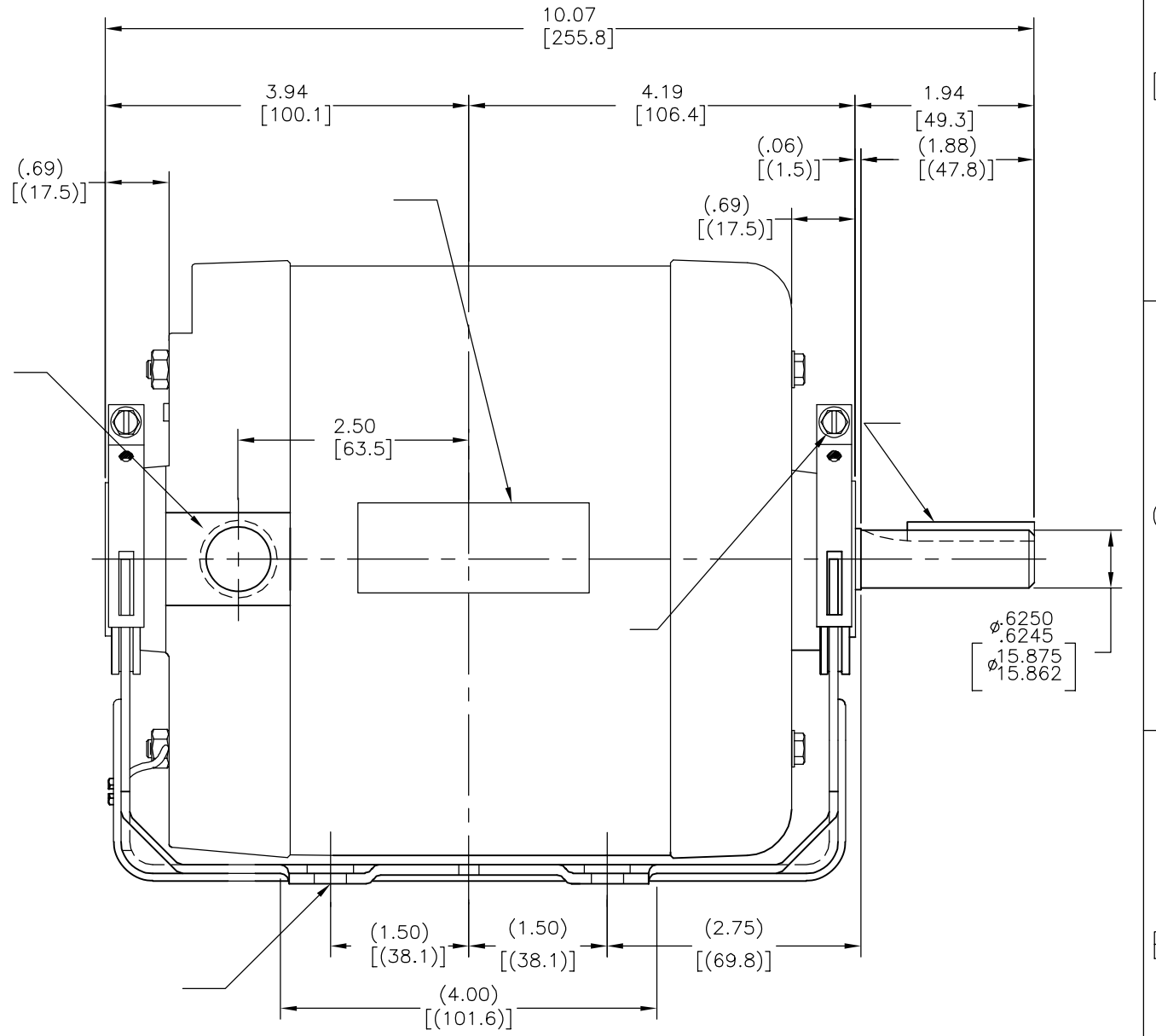
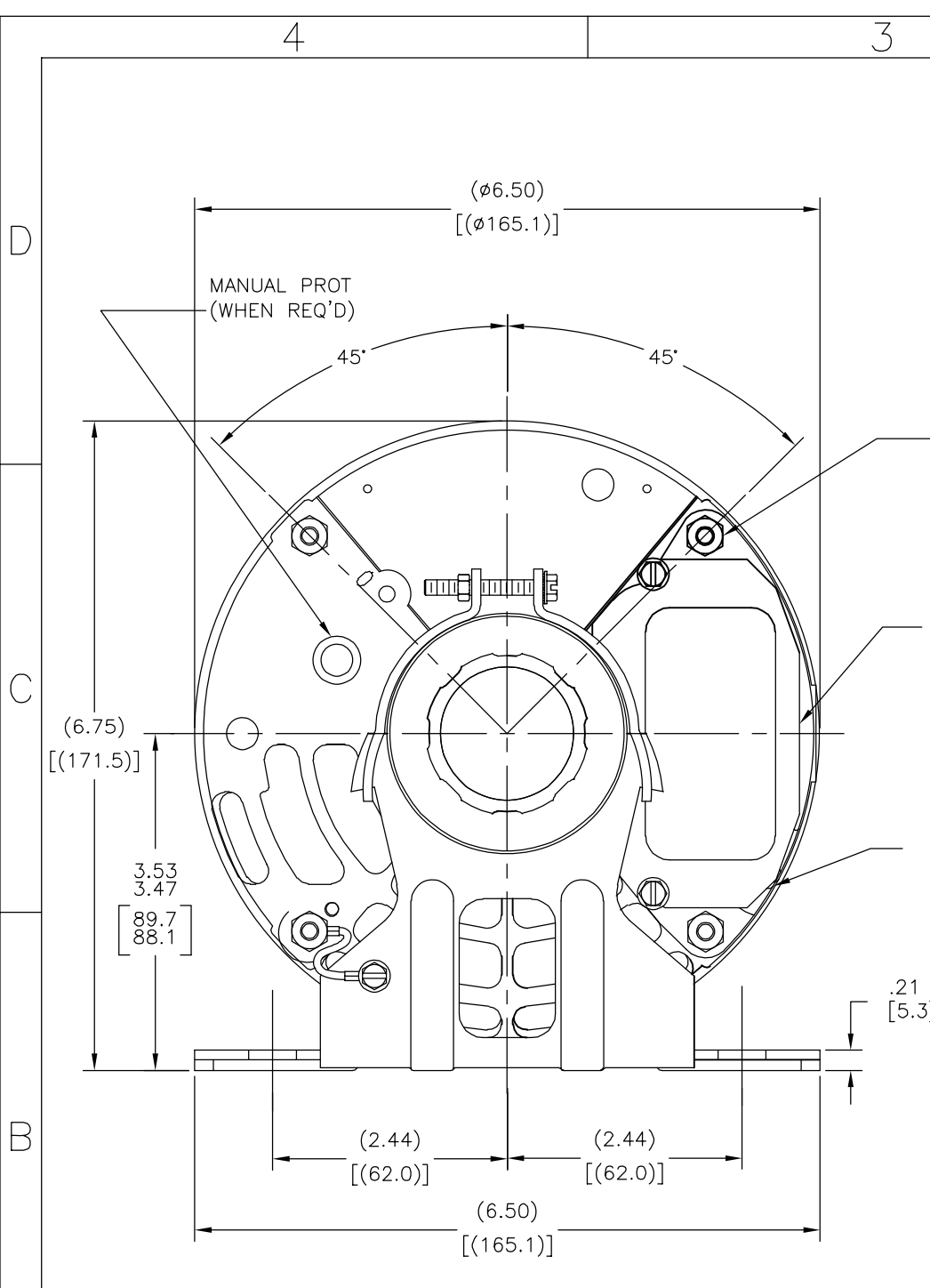
CARACTERISTICAS DE GEOMETRIA Y SIMBOLOS
 □ PLANICIDAD
 - RECTITUD
 < ANGULARIDAD
 ⊥ PERPENDICULARIDAD (A ESCUADRA)
 // PARALELISMO
 ○ REDONDEZ (CIRCULARIDAD)
 ∅ CILINDRICIDAD
 △ PERFIL DE CUALQUIER SUPERFICIE
 ▲ PERFIL DE CUALQUIER LINEA
 ↗ VARIACION
 ⊕ POSICION REAL
 ⊙ CONCENTRICIDAD
 = SIMETRIA

A MENOS QUE SE ESPECIFIQUE DE OTRA MANERA, LAS TOLERANCIAS DE LAS DIMS; SON LAS SIGUIENTES:
 PULG ±.1 ±.02 ±.005 ±.0005
 mm ±0.5 ±0.13 ±0.013
 ANG. ±.50 GRADOS
 ELIMINAR REBABAS Y ORILLAS FILOSAS DEL BORDE.
 PULG .003-.015 mm 0.1-0.4
 FILETEAR ESQUINA: PULG .020 mm 0.5
 MAQUINAR SUPERFICIES
 PULG 125 mm 3.2

DIBUJADO POR: Caddie 10-20-2010
 APROBADO POR: Coloma.Tony 10-20-2010
 TERCER ANGULO DE PROYECCION
 CONFIDENCIAL: ESTE DIBUJO Y SU INFORMACION SON PROPIEDAD DE USO EXCLUSIVO Y CONFIDENCIAL DE REGAL-BELOIT CORPORATION. Y NO DEBERAN SER REVELADOS, DUPLICADOS, DISTRIBUIDOS O USARSE DE OTRA MANERA SIN EL CONSENTIMIENTO ESCRITO DE REGAL-BELOIT CORPORATION. -TODOS LOS DERECHOS RESERVADOS.

REGAL-BELOIT CORPORATION
 DESCRIPCION: OUTLINE
 TAMAÑO: C NUMERO DE DIBUJO: H957L
 ESCALA: NONE HOJA: 1

版本	ECO	编制	日期	批准	日期
B	ECO-0025383	T.HUANG	04-17-2012	B.C.SHEN	04-17-2012



形位公差
 □ 平面度
 — 直线度
 < 倾斜度
 ⊥ 垂直度
 // 平行度
 ○ 圆度
 ⌀ 圆柱度
 △ 面轮廓度
 △ 线轮廓度
 ↗ 圆跳动
 ⊕ 位置度
 ⊙ 同轴度
 ≡ 对称度

除另有注明
 尺寸公差如下:
 英寸 X XX XXX XXXX
 毫米 ±0.1 ±0.02 ±0.005 ±0.0005
 毫米 ±0.5 ±0.13 ±0.013
 角度 ±.50 度
 清理毛刺和尖棱
 英寸 .003-.015 毫米 0.1-0.4
 内圆角
 英寸 .020 毫米 0.5
 表面粗糙度
 英制 125 米制 3.2

米制尺寸显示在 []

ASME Y14.5M 1994

绘图:	Caddie	10-20-2010
批准:	Coloma.Tony	10-20-2010
第三角投影		图纸格式发布日期 11-11-2011 图纸格式版本 G
机密: 本图纸及相关信息所有权归REGAL-BELOIT CORPORATION 未经REGAL-BELOIT CORPORATION书面授权, 不得泄露、 复制、传播或作其他用途。—版权所有		

名称	OUTLINE
图幅	C
图号	H957L
比例	NONE
页号	1