

4

3

2

1

GROUP	TYPE	FRAME	"C"	(BV)
189916-01	SC	J56C	11.34[288.0]	4.09[103.9]
189916-02	SC	K56C	11.71[297.4]	4.46[113.3]
189916-03	SC	G56C	12.21[310.1]	4.96[126.0]
189916-04	SC	N56C	13.46[341.9]	6.21[157.7]
189916-05	SC	Y56C	10.71[272.0]	3.46[87.9]
189916-06	SC	U56C	13.21[335.5]	5.96[151.4]

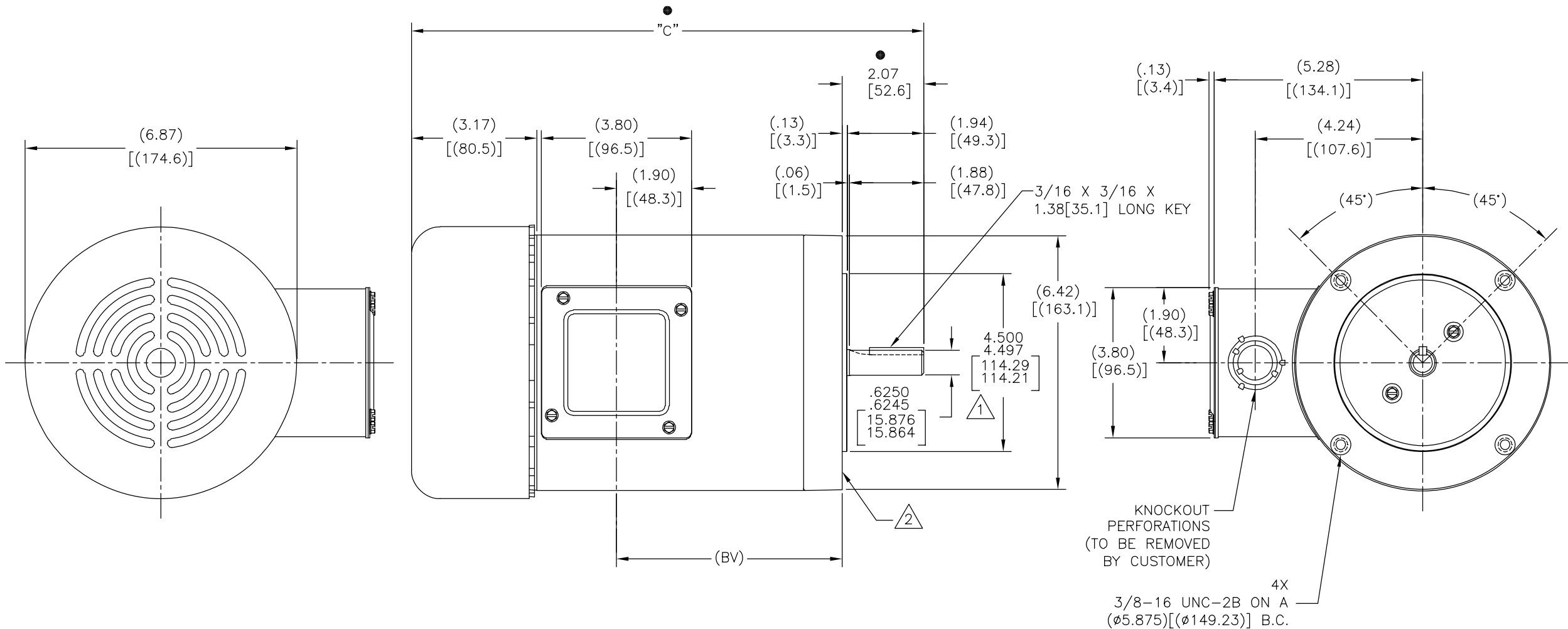
REV	ECO	REV BY	DATE	APPD	DATE
F	ECO-0000766	David	07-14-08	D. Schubert	07-14-08

NOTES:

- PILOT DIAMETER IS CONCENTRIC WITH SHAFT CENTERLINE WITHIN .004[.10] T.I.R.
- FACE OF MOUNTING FLANGE IS PERPENDICULAR TO SHAFT CENTERLINE WITHIN .004[.10] T.I.R.
- SHAFT RUNOUT NOT TO EXCEED .002[.05] T.I.R.
- END PLAY NOT TO EXCEED .010[.25] MEASURED WITH NO THRUST

ALL DIMENSIONS SHOWN IN PARENTHESIS ARE REFERENCE DIMENSIONS. ALL OTHER DIMENSIONS ARE TOLERANCED PER THE FOLLOWING CHART UNLESS OTHERWISE SPECIFIED.

"C" DIM.	= +/- .055[1.40]
SHAFT EXT.	= +/- .034[.86]
LEAD LENGTHS	= +/- 1.00[25.4]
EXTENDED THRU-BOLTS	= +/- .050[1.27]
ANGULAR DIMS.	= +/- 2'



● = CRITICAL DIMENSION

GEOMETRIC CHARACTERISTICS & SYMBOLS	
▭	FLATNESS
—	STRAIGHTNESS
∠	ANGULARITY
⊥	PERPENDICULARITY (SQUARENESS)
∥	PARALLELISM
○	ROUNDNESS (CIRCULARITY)
⊘	CYLINDRICITY
△	PROFILE OF ANY SURFACE
∧	PROFILE OF ANY LINE
↗	RUNOUT
⊕	TRUE POSITION
◎	CONCENTRICITY
≡	SYMMETRY

UNLESS OTHERWISE SPECIFIED DIM. TOLERANCES ARE AS FOLLOWS:	
INCH	±.1 ±.02 ±.005 ±.0005
mm	±0.5 ±0.13 ±0.013
ANG. ±.50 DEG	
REMOVE BURRS & BREAK SHARP EDGES:	
INCH	.003-.015 mm 0.1-0.4
CORNER FILLETS TO:	
INCH	.020 mm 0.5
MACHINE SURFACES:	
INCH	125 mm 3.2
METRIC DIMS. SHOWN IN [BRACKETS]	

DR BY:	DAVHOL	10-13-99
APPD:		
THIRD ANGLE PROJECTION	EDS DATE 01-21-2007	FORMAT REV F
CONFIDENTIAL: THIS DRAWING AND ITS INFORMATION ARE THE EXCLUSIVE AND CONFIDENTIAL PROPERTY OF A.O. SMITH CORP. AND ARE NOT TO BE DISCLOSED, DUPLICATED, DISTRIBUTED OR OTHERWISE USED WITHOUT THE WRITTEN CONSENT OF A.O. SMITH CORP.		
-ALL RIGHTS RESERVED. ASME Y14.5M 1994		

		ELECTRICAL PRODUCTS COMPANY <small>A DIVISION OF A. O. SMITH CORPORATION</small>	
DESCRIPTION			
OUTLINE			
SIZE	C	DWG NO	189916
SCALE	NONE	SHEET	1

4

3

2

1

4

3

2

1

GRUPO	TIPO	CARCAZA	"C"	(BV)
189916-01	SC	J56C	11.34[288.0]	4.09[103.9]
189916-02	SC	K56C	11.71[297.4]	4.46[113.3]
189916-03	SC	G56C	12.21[310.1]	4.96[126.0]
189916-04	SC	N56C	13.46[341.9]	6.21[157.7]
189916-05	SC	Y56C	10.71[272.0]	3.46[87.9]
189916-06	SC	U56C	13.21[335.5]	5.96[151.4]

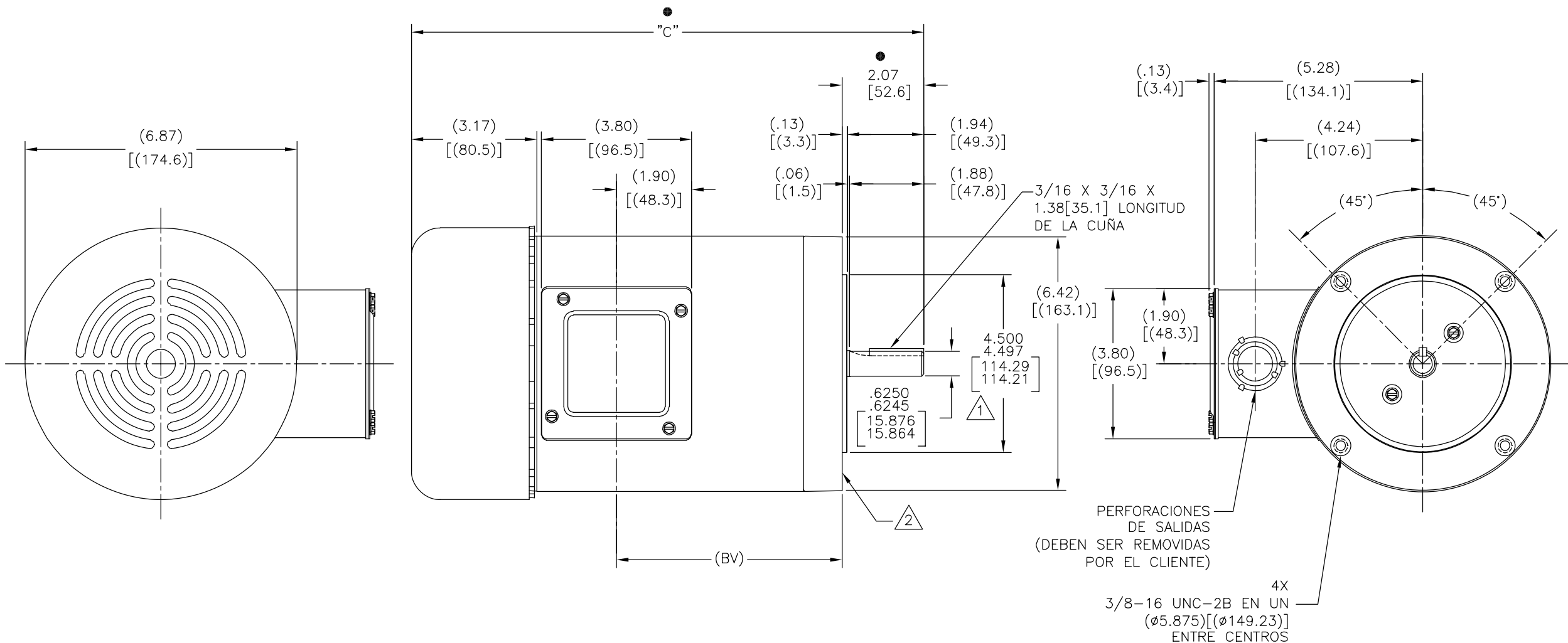
REVISION:	ECO	REVISADO POR:	FECHA:	APROBADO POR:	FECHA:
F	ECO-0000766	David	07-14-08	D. Schubert	07-14-08

NOTAS:

- DIAMETRO PILOTO ES CONCENTRICO CON LA LINEA DE CENTRO DE LA FLECHA DENTRO DE .004[.10] L.T.I.
- CARA DEL REBORDE DE MONTAJE ES PERPENDICULAR A LA LINEA DE CENTRO DE LA FLECHA DENTRO DE .004[.10] L.T.I.
- LA OSCILACION DE LA FLECHA NO DEBE EXCEDER DE .002[.05] L.T.I.
- JUEGO AXIAL NO DEBE EXCEDER DE .010 [.25] MEDIDO SIN EMPUJE

TODAS LAS DIMENSIONES MOSTRADAS ENTRE PARENTESIS SON DIMENSIONES DE REFERENCIA. TODAS LAS DEMAS DIMENSIONES TIENEN TOLERANCIA DE ACUERDO A LA SIGUIENTE TABLA A MENOS QUE SE ESPECIFIQUE LO CONTRARIO.

"C" DIM.	= +/- .055[1.40]
EXTENSION DE FLECHA	= +/- .034[.86]
LONGITUD DE CABLES	= +/- 1.00[25.4]
EXTENSION DE PERNO PASADO	= +/- .050[1.27]
DIMENSION ANGULAR	= +/- 2'



● = DIMENSION CRITICA

CARACTERISTICAS DE GEOMETRIA Y SIMBOLOS

- ▧ PLANICIDAD
- RECTITUD
- ∠ ANGULARIDAD
- ⊥ PERPENDICULARIDAD (A ESCUADRA)
- // PARALELISMO
- REDONDEZ (CIRCULARIDAD)
- ⊘ CILINDRICIDAD
- △ PERFIL DE CUALQUIER SUPERFICIE
- ∧ PERFIL DE CUALQUIER LINEA
- ↑ VARIACION
- ⊕ POSICION REAL
- ◎ CONCENTRICIDAD
- = SIMETRIA

A MENOS QUE SE ESPECIFIQUE DE OTRA MANERA, LAS TOLERANCIAS DE LAS DIMS: SON LAS SIGUIENTES:

PULG ±.1 ±.02 ±.005 ±.0005
 mm ±0.5 ±0.13 ±0.013

ANG. ± 50 GRADOS

ELIMINAR REBABAS Y ORILLAS FILOSAS DEL BORDE.

PULG .003-.015 mm 0.1-0.4

FILETEAR ESQUINA: PULG .020 mm 0.5

MAQUINAR SUPERFICIES

PULG 125 mm .32

DIMS METRICAS MOSTRADAS [PARENTESIS]

DIBUJADO POR:	DAVHOL	10-13-99
APROBADO POR:		
TERCER ANGULO DE PROYECCION	⊕	FECHA EDS: 01-21-2007
		REV. FORMATO: F
CONFIDENCIAL: ESTE DIBUJO Y SU INFORMACION SON PROPIEDAD DE USO EXCLUSIVO Y CONFIDENCIAL DE A.O.SMITH CORP. Y NO DEBERAN SER REVELADOS, DUPLICADOS, DISTRIBUIDOS O USARSE DE OTRA MANERA SIN EL CONSENTIMIENTO ESCRITO DE A.O. SMITH CORP. -TODOS LOS DERECHOS RESERVADOS.ASME Y14.5M 1994		

ELECTRICAL PRODUCTS COMPANY <small>A DIVISION OF A. O. SMITH CORPORATION</small>	
DESCRIPCION: OUTLINE	
TAMAÑO: C	NUMERO DE DIBUJO: 189916
ESCALA: NONE	HOJA: 1

4

3

2

1

4

3

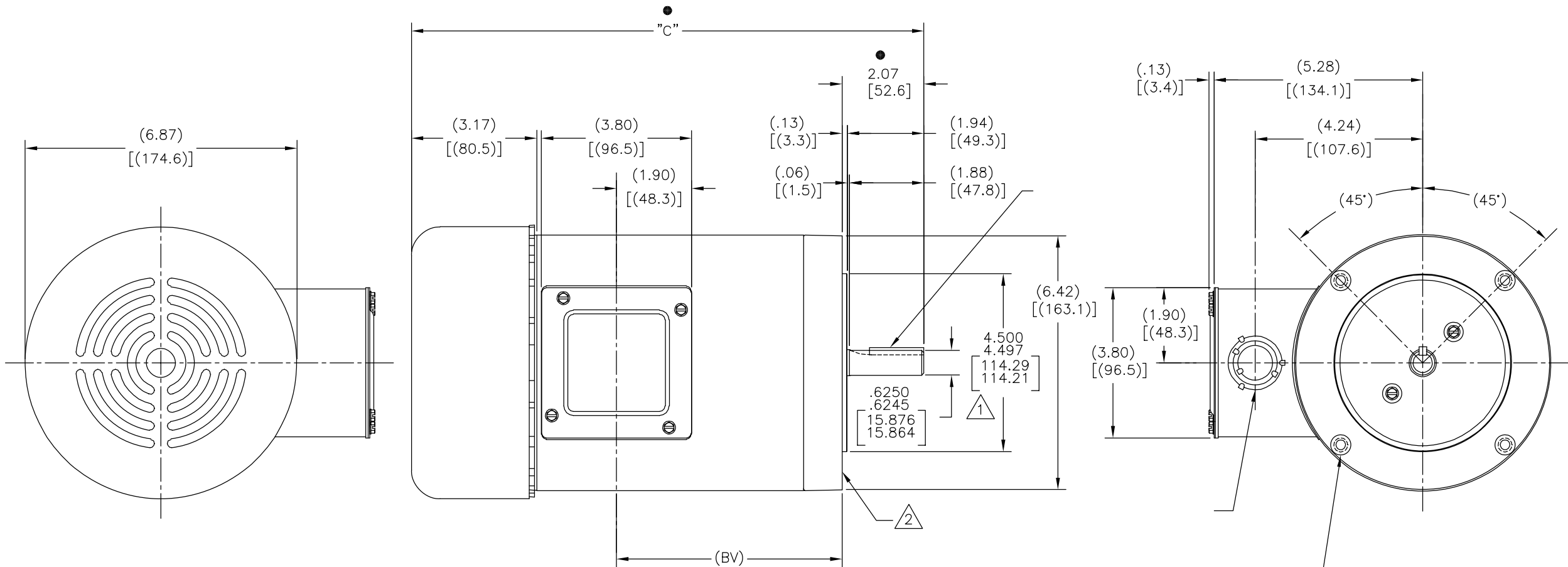
2

1

			"C"	(BV)
189916-01	SC	J56C	11.34[288.0]	4.09[103.9]
189916-02	SC	K56C	11.71[297.4]	4.46[113.3]
189916-03	SC	G56C	12.21[310.1]	4.96[126.0]
189916-04	SC	N56C	13.46[341.9]	6.21[157.7]
189916-05	SC	Y56C	10.71[272.0]	3.46[87.9]
189916-06	SC	U56C	13.21[335.5]	5.96[151.4]

版本	ECO	编制	日期	批准	日期
F	ECO-0000766	David	07-14-08	D. Schubert	07-14-08

= +/- .055[1.40]
 = +/- .034[.86]
 = +/- 1.00[25.4]
 = +/- .050[1.27]
 = +/- 2°



形位公差
□ 平面度
— 直线度
∠ 倾斜度
⊥ 垂直度
// 平行度
○ 圆度
⊘ 圆柱度
△ 面轮廓度
∩ 线轮廓度
↗ 圆跳动
⊕ 位置度
⊙ 同轴度
≡ 对称度

除另有注明
尺寸公差如下:
 英寸 X XX XXX XXXX
 毫米 ±0.1 ±0.02 ±0.005 ±0.005
 毫米 ±0.5 ±0.13 ±0.013
 角度 ±.50 度
 清理毛刺和尖棱
 英寸 .003-.015 毫米 0.1-0.4
 内圆角
 英寸 .020 毫米 0.5
 表面粗糙度
 英制 125 米制 3.2
 米制尺寸显示在 []

绘图:	DAVHOL	10-13-99
批准:		
第三角投影		图纸格式发布日期 01-21-2007 图纸格式版本 F
机密: 本图纸及相关信息所有权归A. O. SMITH公司所有。未经A. O. SMITH公司书面授权, 不得泄露、复制、传播或作其他用途。—版权所有		
ASME Y14.5M 1994		

ACSmith Innovation has a name.		ELECTRICAL PRODUCTS COMPANY A DIVISION OF A. O. SMITH CORPORATION	
名称 OUTLINE			
图幅 C	图号 189916		比例 NONE
			页号 1

4

3

2

1