

4

3

2

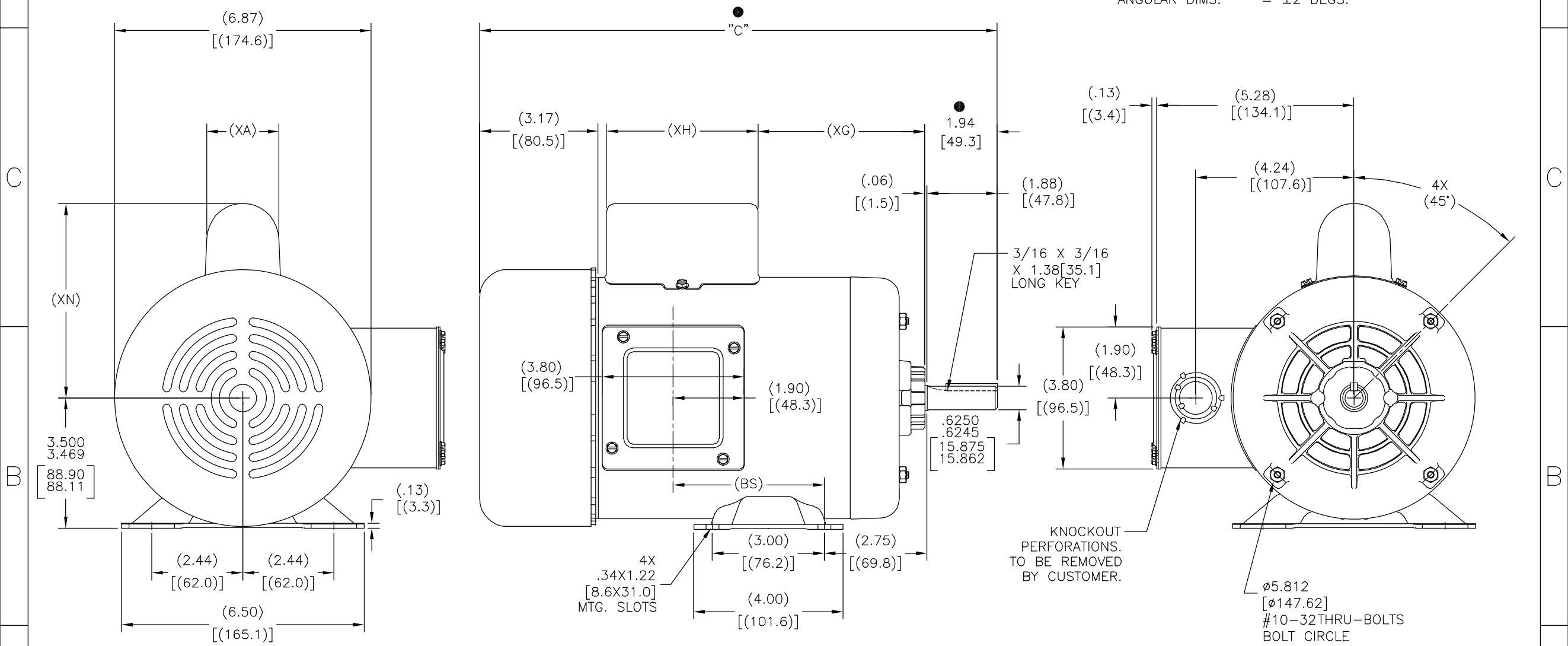
1

REV	ECO	REV BY	DATE	APPD	DATE
B	0025373	Y.LIU	04-18-2012	B.SHEN	04-17-2012

GROUP	TYPE	FRAME	"C"	(BS)	(XA)	(XG)	(XH)	(XN)
189905-01	CS	K56	12.61[320.3]	2.80[71.1]	2.01[51.1]	3.22[81.8]	4.06[103.1]	5.20[132.1]
189905-02	CS	L56	13.36[339.3]	3.55[90.2]	2.01[51.1]	3.97[100.8]	4.06[103.1]	5.20[132.1]
189905-03	CS	H56	11.24[285.5]	1.43[36.3]	1.64[41.7]	1.84[46.7]	4.08[103.6]	4.87[123.7]
189905-04	CS	J56	12.24[310.9]	2.43[61.7]	1.64[41.7]	2.84[72.1]	4.08[103.6]	4.87[123.7]
189905-05	CS	J56	12.24[310.9]	2.43[61.7]	1.64[41.7]	2.85[72.4]	4.06[103.1]	4.79[121.7]
189905-06	CS	L56	13.36[339.3]	3.55[90.2]	1.64[41.7]	3.96[100.6]	4.08[103.6]	4.87[123.7]

ALL DIMENSION SHOWN IN PARENTHESIS ARE REFERENCE DIMENSIONS. ALL OTHER DIMENSIONS ARE TOLERANCED PER THE FOLLOWING CHART UNLESS OTHERWISE SPECIFIED.

"C" DIM. = ±.055[±1.40]  
 SHAFT EXT. = ±.034[±.86]  
 LEAD LENGTHS EXTENDED = ±1.00[±25.4]  
 THRU-BOLTS = ±.050[±1.27]  
 ANGULAR DIMS. = ±2 DEGS.



GEOMETRIC CHARACTERISTICS & SYMBOLS

- FLATNESS
- STRAIGHTNESS
- ∠ ANGULARITY
- ⊥ PERPENDICULARITY (SQUARENESS)
- // PARALLELISM
- ROUNDNESS (CIRCULARITY)
- ⊘ CYLINDRICITY
- △ PROFILE OF ANY SURFACE
- ∧ PROFILE OF ANY LINE
- ↗ RUNOUT
- ⊕ TRUE POSITION
- ⊙ CONCENTRICITY
- ≡ SYMMETRY

ASME Y14.5M 1994

UNLESS OTHERWISE SPECIFIED DIM. TOLERANCES ARE AS FOLLOWS:

INCH X XX XXX XXXX  
 ±.1 ±.02 ±.005 ±.0005  
 mm ±0.5 ±0.13 ±0.013

ANG. ±.50 DEG  
 REMOVE BURRS & BREAK SHARP EDGES:  
 INCH .003-.015 mm 0.1-0.4

CORNER FILLETS TO:  
 INCH .020 mm 0.5

MACHINE SURFACES:  
 INCH 125 mm 3.2

METRIC DIMS. SHOWN IN [BRACKETS]

DR BY: J.Aguilera 03-01-2011

APPD:

THIRD ANGLE PROJECTION

EDS DATE 11-11-2011  
 FORMAT REV G

CONFIDENTIAL: THIS DRAWING AND ITS INFORMATION ARE THE EXCLUSIVE AND CONFIDENTIAL PROPERTY OF REGAL-BELOIT CORPORATION AND ARE NOT TO BE DISCLOSED, DUPLICATED, DISTRIBUTED OR OTHERWISE USED WITHOUT THE WRITTEN CONSENT OF REGAL-BELOIT CORPORATION. -ALL RIGHTS RESERVED.

REGAL-BELOIT CORPORATION

DESCRIPTION: OUTLINE

SIZE: C DWG NO: C669

SCALE: NONE SHEET: 1

4

3

2

1

4

3

2

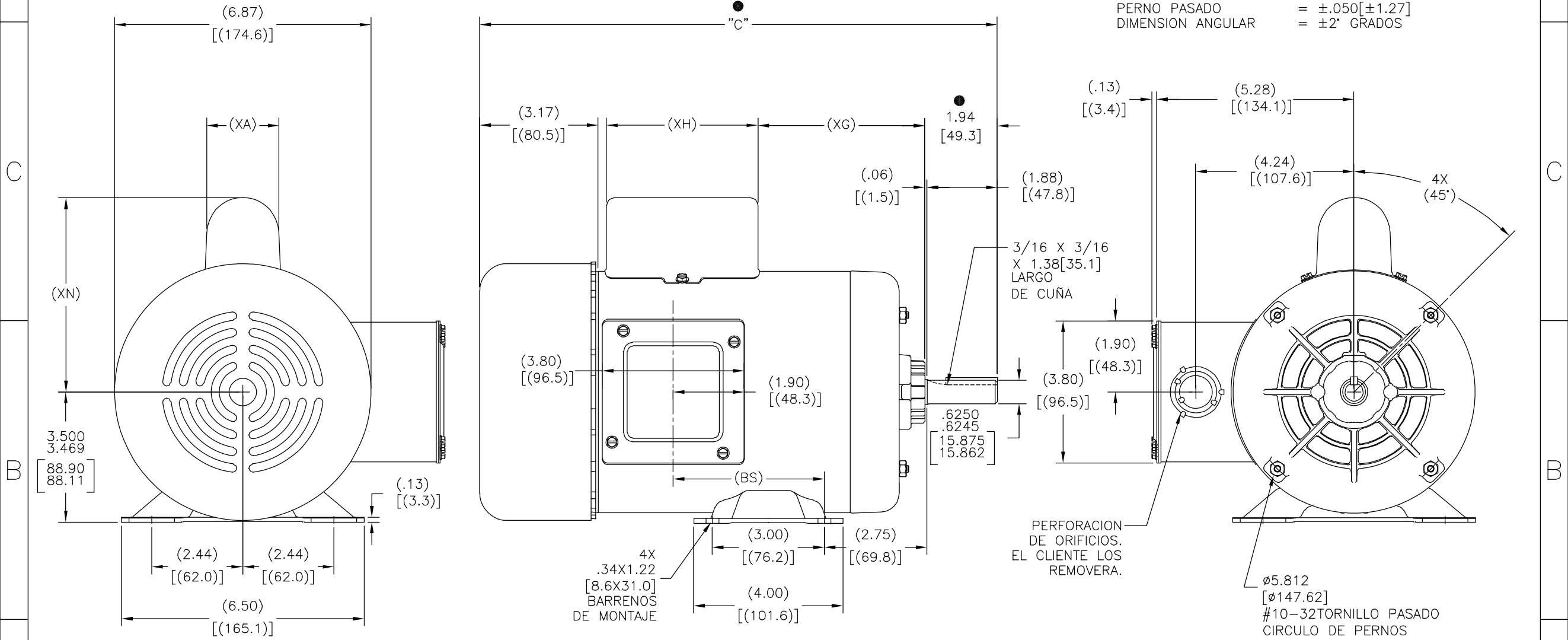
1

REVISION:	ECO	REVISADO POR:	FECHA:	APROBADO POR:	FECHA:
B	0025373	Y.LIU	04-18-2012	B.SHEN	04-17-2012

GRUPO	CLASE	CARCAZA	"C"	(BS)	(XA)	(XG)	(XH)	(XN)
189905-01	CS	K56	12.61[320.3]	2.80[71.1]	2.01[51.1]	3.22[81.8]	4.06[103.1]	5.20[132.1]
189905-02	CS	L56	13.36[339.3]	3.55[90.2]	2.01[51.1]	3.97[100.8]	4.06[103.1]	5.20[132.1]
189905-03	CS	H56	11.24[285.5]	1.43[36.3]	1.64[41.7]	1.84[46.7]	4.08[103.6]	4.87[123.7]
189905-04	CS	J56	12.24[310.9]	2.43[61.7]	1.64[41.7]	2.84[72.1]	4.08[103.6]	4.87[123.7]
189905-05	CS	J56	12.24[310.9]	2.43[61.7]	1.64[41.7]	2.85[72.4]	4.06[103.1]	4.79[121.7]
189905-06	CS	L56	13.36[339.3]	3.55[90.2]	1.64[41.7]	3.96[100.6]	4.08[103.6]	4.87[123.7]

TODAS LAS DIMENSIONES MOSTRADAS ENTRE PARENTESIS SON DIMENSIONES DE REFERENCIA. TODAS LAS DEMAS DIMENSIONES MANEJAN UNA TOLERANCIA QUE SE MUESTRA EN LA SIGUIENTE TABLA A MENOS DE QUE SE ESPECIFIQUE LO CONTRARIO.

DIMENSION DE "C"	= ±.055[±1.40]
EXTENSION DE FLECHA	= ±.034[±.86]
LARGO DE CABLES EXTENDIDOS	= ±1.00[±25.4]
PERNO PASADO	= ±.050[±1.27]
DIMENSION ANGULAR	= ±2° GRADOS



<p>CARACTERISTICAS DE GEOMETRIA Y SIMBOLOS</p> <ul style="list-style-type: none"> <li>□ PLANICIDAD</li> <li>— RECTITUD</li> <li>∠ ANGULARIDAD</li> <li>⊥ PERPENDICULARIDAD (A ESQUADRA)</li> <li>// PARALELISMO</li> <li>○ REDONDEZ (CIRCULARIDAD)</li> <li>⊘ CILINDRICIDAD</li> <li>△ PERFIL DE CUALQUIER SUPERFICIE</li> <li>∧ PERFIL DE CUALQUIER LINEA</li> <li>∩ VARIACION</li> <li>⊕ POSICION REAL</li> <li>◎ CONCENTRICIDAD</li> <li>= SIMETRIA</li> </ul> <p>ASME Y14.5M 1994</p>	<p>A MENOS QUE SE ESPECIFIQUE DE OTRA MANERA, LAS TOLERANCIAS DE LAS DIMS; SON LAS SIGUIENTES:</p> <p>PULG ±.1 ±.02 ±.005 ±.0005                  mm ±0.5 ±0.13 ±0.013</p> <p>ANG. ±.50 GRADOS</p> <p>ELIMINAR REBABAS Y ORILLAS FILOSAS DEL BORDE.</p> <p>PULG .003-.015 mm 0.1-0.4</p> <p>FILETEAR ESQUINA: PULG .020 mm 0.5</p> <p>MAQUINAR SUPERFICIES</p> <p>PULG 125 mm .32</p> <p>DIMS METRICAS MOSTRADAS [PARENTESIS]</p>	DIBUJADO POR: J.Aguilera	03-01-2011	<p>REGAL-BELOIT CORPORATION</p>	
		APROBADO POR: .	.		DESCRIPCION: OUTLINE
		TERCER ANGULO DE PROYECCION 	FECHA EDS: 11-11-2011 REV. FORMATO: G		TAMAÑO: C NUMERO DE DIBUJO: C669
		CONFIDENCIAL: ESTE DIBUJO Y SU INFORMACION SON PROPIEDAD DE USO EXCLUSIVO Y CONFIDENCIAL DE REGAL-BELOIT CORPORATION. Y NO DEBERAN SER REVELADOS, DUPLICADOS, DISTRIBUIDOS O USARSE DE OTRA MANERA SIN EL CONSENTIMIENTO ESCRITO DE REGAL-BELOIT CORPORATION. -TODOS LOS DERECHOS RESERVADOS.	ESCALA: NONE		HOJA: 1

4

3

2

1

4

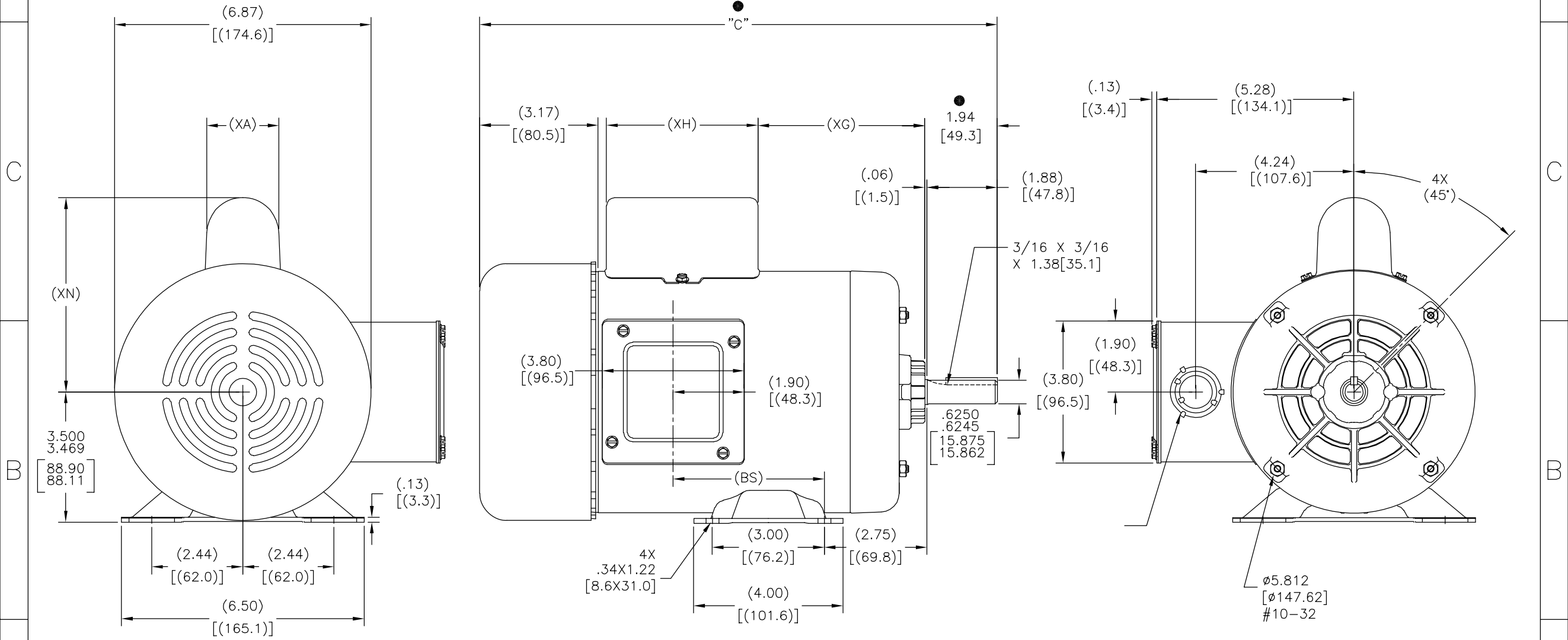
3

2

1

版本	ECO	编制	日期	批准	日期
B	0025373	Y.LIU	04-18-2012	B.SHEN	04-17-2012

			"C"	(BS)	(XA)	(XG)	(XH)	(XN)
189905-01	CS	K56	12.61[320.3]	2.80[71.1]	2.01[51.1]	3.22[81.8]	4.06[103.1]	5.20[132.1]
189905-02	CS	L56	13.36[339.3]	3.55[90.2]	2.01[51.1]	3.97[100.8]	4.06[103.1]	5.20[132.1]
189905-03	CS	H56	11.24[285.5]	1.43[36.3]	1.64[41.7]	1.84[46.7]	4.08[103.6]	4.87[123.7]
189905-04	CS	J56	12.24[310.9]	2.43[61.7]	1.64[41.7]	2.84[72.1]	4.08[103.6]	4.87[123.7]
189905-05	CS	J56	12.24[310.9]	2.43[61.7]	1.64[41.7]	2.85[72.4]	4.06[103.1]	4.79[121.7]
189905-06	CS	L56	13.36[339.3]	3.55[90.2]	1.64[41.7]	3.96[100.6]	4.08[103.6]	4.87[123.7]



形位公差 □ 平面度 — 直线度 < 倾斜度 ⊥ 垂直度 // 平行度 ○ 圆度 ⊙ 圆柱度 △ 面轮廓度 ⊖ 线轮廓度 ↗ 圆跳动 ⊕ 位置度 ⊙ 同轴度 ≡ 对称度	除另有注明 尺寸公差如下: 英寸 X XX XXX XXXX 毫米 ±.1 ±.02 ±.005 ±.0005 毫米 ±0.5 ±0.13 ±0.013 角度 ±.50 度 清理毛刺和尖棱 英寸 .003-.015 毫米 0.1-0.4 内圆角 英寸 .020 毫米 0.5 表面粗糙度 英制 125 米制 3.2
---	--

绘图:	J.Aguilera	03-01-2011
批准:		
第三角投影	图纸格式发布日期 11-11-2011 图纸格式版本 G	名称
机密: 本图纸及相关信息所有权归REGAL-BELOIT CORPORATION. 未经REGAL-BELOIT CORPORATION书面授权, 不得泄露、 复制、传播或作其他用途。—版权所有		图幅
		图号
		比例
		页号

REGAL-BELOIT CORPORATION	
OUTLINE	
C	C669
NONE	1

4

3

2

1

ASME Y14.5M 1994

米制尺寸显示在 [ ]