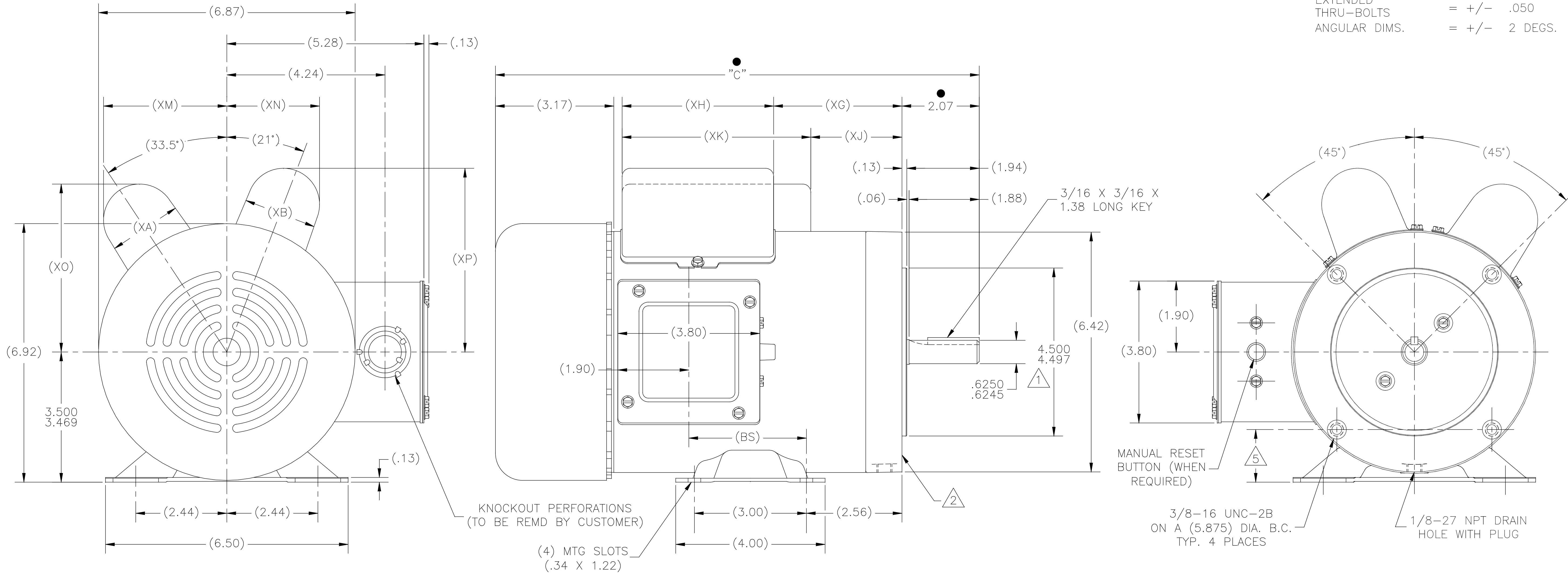


NOTES:

- 1 PILOT DIAMETER IS CONCENTRIC WITH SHAFT CENTERLINE WITHIN .004 T.I.R.
- 2 FACE OF MOUNTING FLANGE IS PERPENDICULAR TO SHAFT CENTERLINE WITHIN .004 T.I.R.
- 3 SHAFT RUNOUT NOT TO EXCEED .002 T.I.R.
- 4 ENDPLAY NOT TO EXCEED .010 MEASURED WITH NO THRUST.
- 5 THE 2 BOTTOM HOLES IN THE MTG FLANGE ARE PARALLEL FROM THE BOTTOM OF THE FEET WITHIN .030.

ALL DIMENSIONS SHOWN IN PARENTHESIS ARE REFERENCE DIMENSIONS. ALL OTHER DIMENSIONS ARE TOLERANCED PER THE FOLLOWING CHART UNLESS OTHERWISE SPECIFIED.

"C" DIM.	= +/- .055
SHAFT EXT.	= +/- .034
LEAD LENGTHS	= +/- 1.00
EXTENDED THRU-BOLTS	= +/- .050
ANGULAR DIMS.	= +/- 2 DEGS.



-03															
-02															
-01	CP	T56C	12.71	2.90	2.27	2.01	3.19	4.06	1.94	5.30	3.52	2.49	4.77	4.92	
A	GROUP	TYPE	FRAME	"C"	(BS)	(XA)	(XB)	(XG)	(XH)	(XJ)	(XK)	(XM)	(XN)	(XO)	(XP)

● = CRITICAL DIMENSION

DRAWING REVISION G	REVISION BY A. LITTLE/JOHN	DATE 08-10-2016	TOLERANCES UNLESS OTHERWISE SPECIFIED DEC INCH mm ANGLE	DRAWN BY EIS
ECO 0098984	APPROVED BY J. HESS	DATE 08-15-2016	.X ±0.1 [±2.5] ±0.5° .XX ±0.02 [±0.51] .XXX ±0.005 [±0.127] .XXXX ±0.0005 [±0.0127]	DATE: 06-17-1993
2007 DESCRIPTION THRU-BOLT CHANGE			REMOVE BURRS & BREAK SHARP EDGES .003/.015 [0.076/.381] CORNER FILLETS .02 [.51] MACHINED SURFACES .002 INCH [51] mm mm SHOWN IN [BRACKETS]	APPROVED BY: DATE:
COPYRIGHT REGAL BELOIT AMERICA, INC. ALL RIGHTS RESERVED. PROPRIETARY AND CONFIDENTIAL INFORMATION - THIS DOCUMENT IS THE PROPERTY OF REGAL BELOIT AMERICA, INC. (OWNER) AND CONTAINS OWNER'S PROPRIETARY INFORMATION. ANY REPRODUCTION OR OTHER FORM REUSE OF IT IS PROHIBITED BY RECEIVING IT TO AGREE THAT IT AND/OR ANY PART OF IT, SHALL NOT BE DISCLOSED TO ANY PERSON, CORPORATION OR OTHER ENTITY, IN ANY MANNER, WITHOUT THE EXPRESS APPROVAL IN WRITING IN ADVANCE BY OWNER. THIS DOCUMENT SHALL BE RETURNED TO OWNER UPON REQUEST. IT MAY BE SUBJECT TO CERTAIN RESTRICTIONS UNDER APPLICABLE EXPORT CONTROL LAWS AND REGULATIONS.			REFERENCE	DESCRIPTION OUTLINE
			THIRD ANGLE PROJECTION	MATERIAL PROCESS/FINISH
			SIZE [DWG NO.] D 183769	SHEET 1