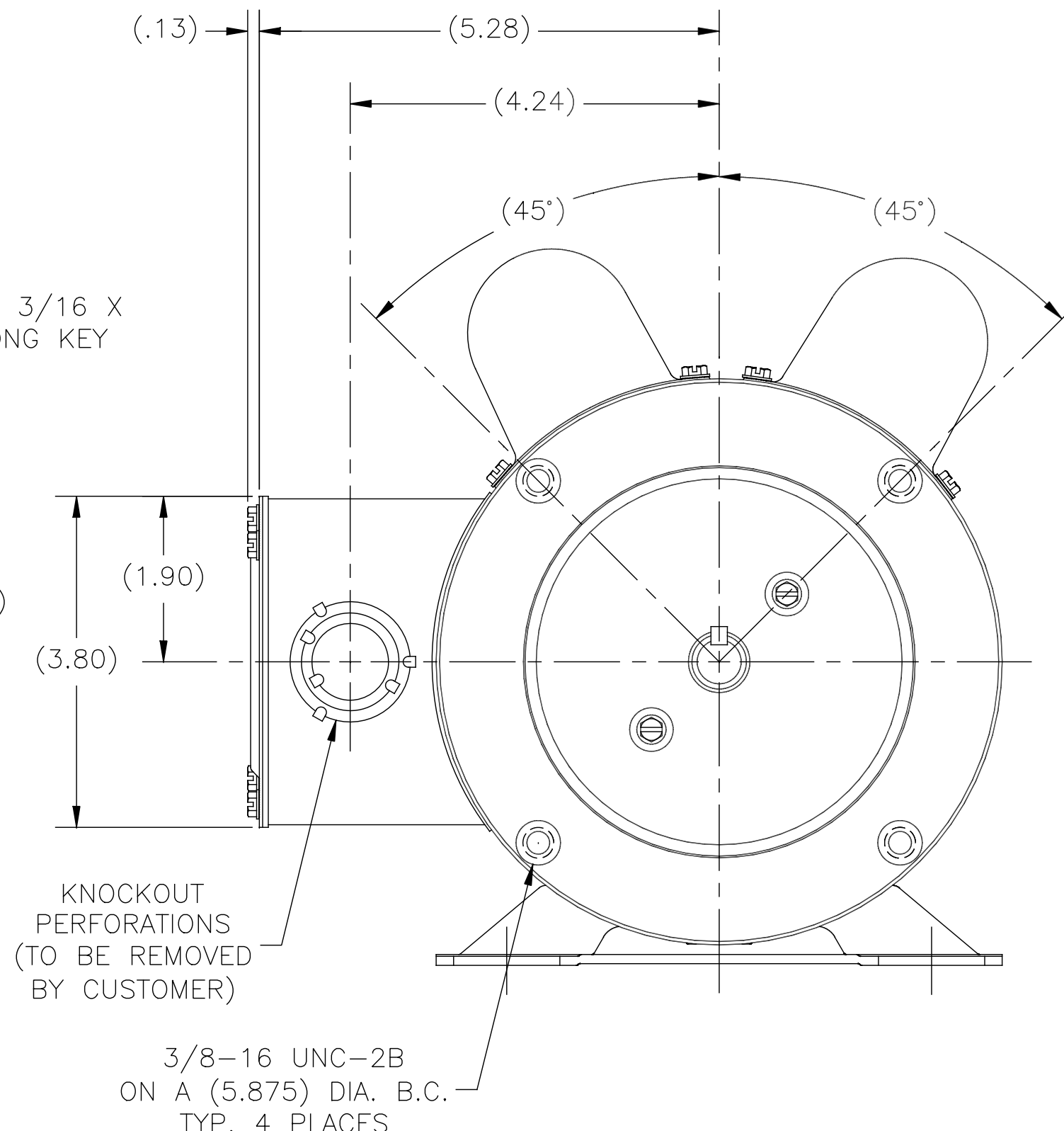
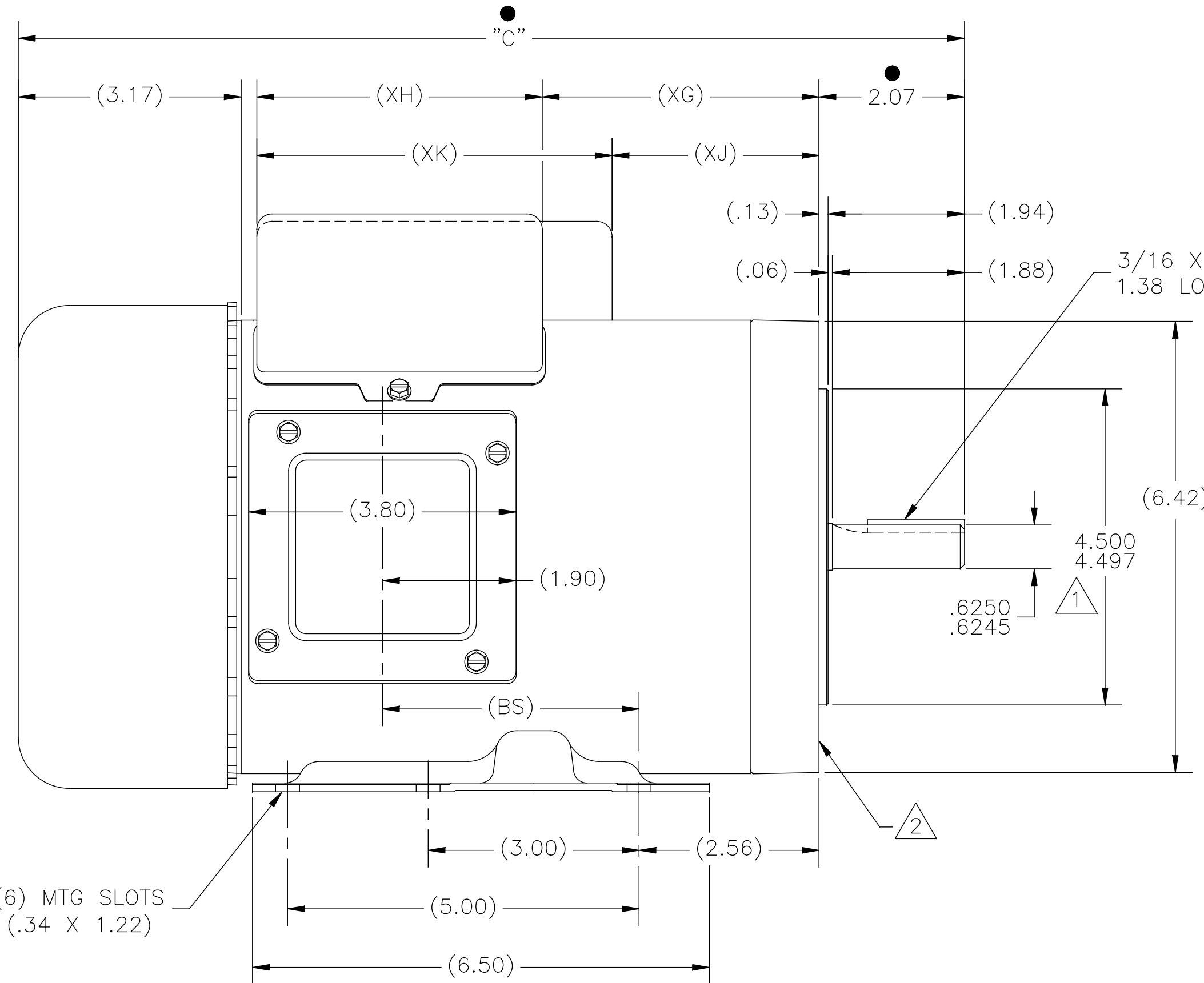
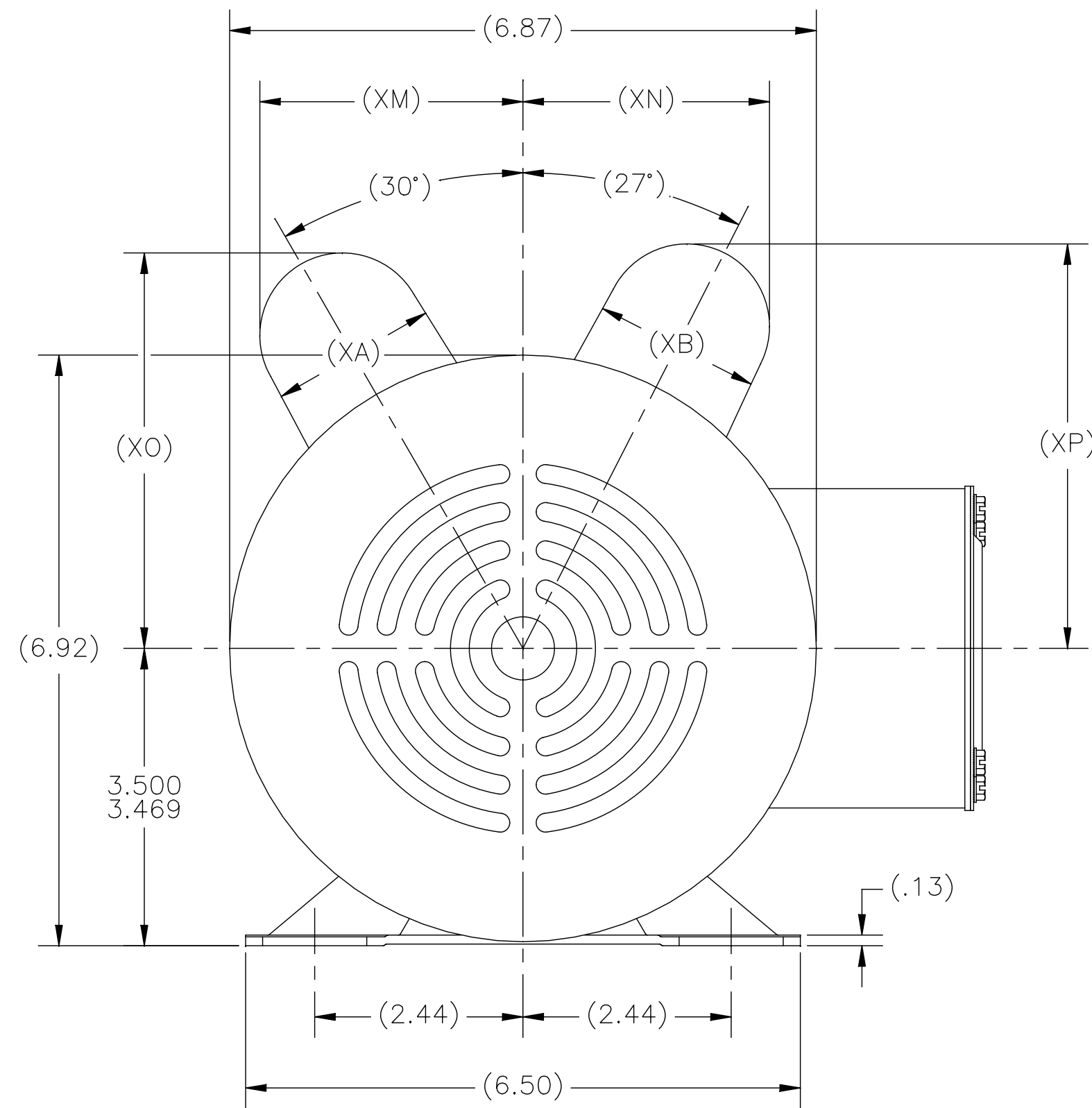
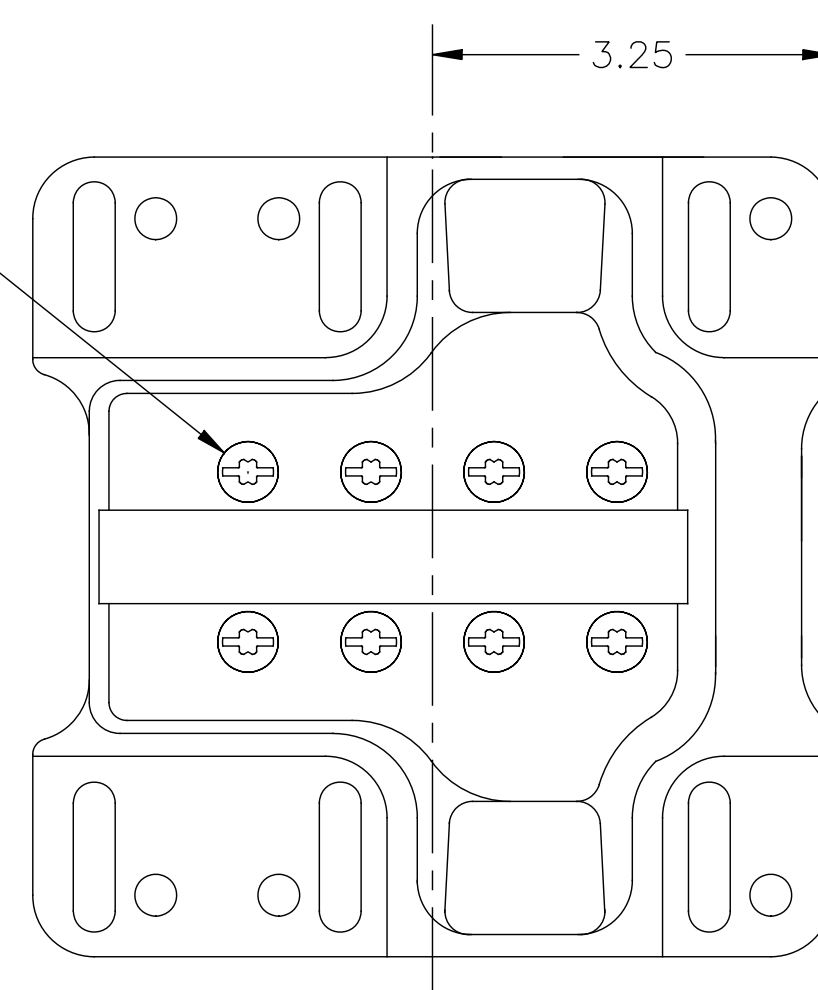


8			7			6			5			4		3		2		1	
GROUP	TYPE	FRAME	"C"	(BS)	(XA)	(XB)	(XG)	(XH)	(XJ)	(XK)	(XM)	(XN)	(XO)	(XP)					
-01	CP	X56HC	13.71	3.90	2.01	2.01	3.19	5.06	3.19	5.06	3.08	2.89	4.63	4.74					
-02	CP	P56HC	14.21	4.40	2.01	2.27	3.44	5.30	3.69	5.06	3.08	3.09	4.63	5.02					
-03	CP	R56HC	14.96	5.15	2.01	2.01	5.44	4.06	4.44	5.06	3.08	2.89	4.63	4.74					
-04	CP	Y56HC	15.21	5.40	2.01	2.27	4.44	5.30	4.69	5.06	3.08	3.09	4.63	5.02					
-05																			



(8) TORQ-SLTD HEAD SELF TAPPING SCREWS (189156-01) TORQUE TO 30 INCH/LBS.



**CAUTION:**  
BASE TO BE ATTACHED WITH SCREWS. DO NOT WELD.

NOTES:

- 1. PILOT DIAMETER IS CONCENTRIC WITH SHAFT CENTERLINE WITHIN .004 T.I.R.
- 2. FACE OF MOUNTING FLANGE IS PERPENDICULAR TO SHAFT CENTERLINE WITHIN .004 T.I.R.
- 3. SHAFT RUNOUT NOT TO EXCEED .002 T.I.R.
- 4. END PLAY NOT TO EXCEED .010 MEASURED WITH NO THRUST

ALL DIMENSIONS SHOWN IN PARENTHESIS ARE REFERENCE DIMENSIONS. ALL OTHER DIMENSIONS ARE TOLERANCED PER THE FOLLOWING CHART UNLESS OTHERWISE SPECIFIED.

"C" DIM.	= +/- .055
SHAFT EXT.	= +/- .034
LEAD LENGTHS	= +/- 1.00
EXTENDED THRU-BOLTS	= +/- .050
ANGULAR DIMS.	= +/- 2 DEGS.

● = CRITICAL DIMENSION

DRAWING REVISION	REVISION BY	DATE	TOLERANCES UNLESS OTHERWISE SPECIFIED	DRAWN BY	Regal Beloit America, Inc.	
F	A. LITTLEJOHN	08-12-2016	DEC INCH mm ANGLE	DAWIDOL		
ECC	J. HESS	08-17-2016	.X ±0.1 [±2.5] ±0.5°	DATE:	03-13-2000	
200 DESCRIPTION	THRU-BOLT CHANGE		.XX ±0.02 [±0.51]	APPROVED BY:	DESCRIPTION	
			.XXX ±0.005 [±0.127]	DATE:	OUTLINE	
			.XXXX ±0.0005 [±0.0127]	DATE:	BB TEFC	
<small>COPYRIGHT REGAL BELOIT AMERICA, INC. ALL RIGHTS RESERVED. REGAL BELOIT AMERICA, INC. (POWER) AND CONTAINS OWNER'S PROPRIETARY INFORMATION. ANY REPRODUCTION OR OTHER FORM RESERVE IT IS REMOVED BY RECEIVING IT TO AGREE THAT IT AND/OR ANY PART OF IT, SHALL NOT BE DISCLOSED TO ANY PERSON, CORPORATION OR OTHER ENTITY, AND/OR USED, EXCEPT AS EXPRESSLY APPROVED IN WRITING IN ADVANCE BY OWNER. THIS DOCUMENT SHALL BE RETURNED TO OWNER UPON REQUEST. IT MAY BE SUBJECT TO CERTAIN RESTRICTIONS UNDER APPLICABLE EXPORT CONTROL LAWS AND REGULATIONS.</small>			REMOVE BURRS & BREAK SHARP EDGES .003/.015 [.076/.381] CORNER FILLETS .02 [.51] MACHINED SURFACES .125 INCH / .015 mm / .00125 INCH / .03175 mm SHOWN IN [BRACKETS]	REFERENCE MATERIAL PROCESS/FINISH THIRD ANGLE PROJECTION	SIZE DWG NO 195135	SHEET 1