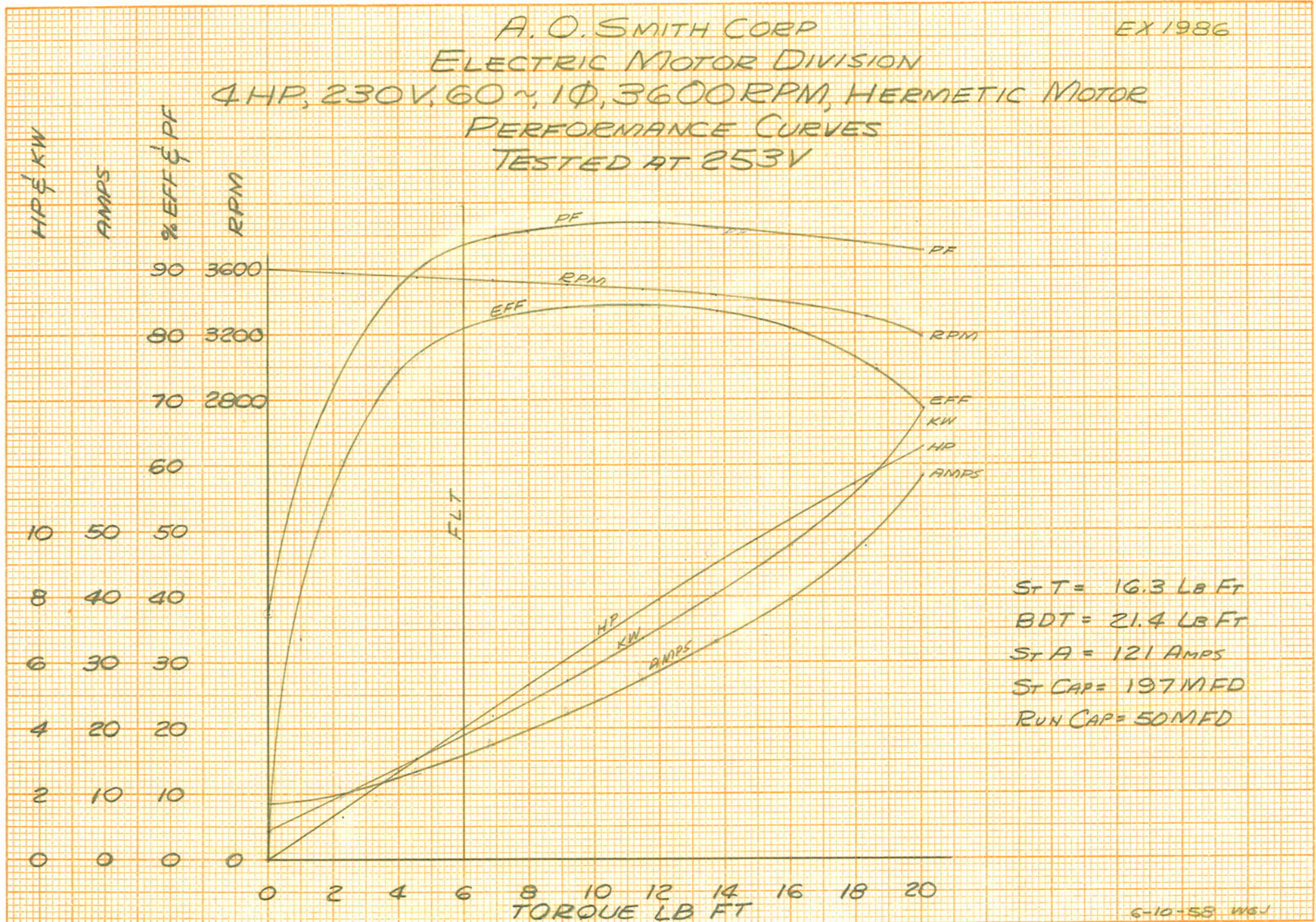


C-907

EX 1986

A. O. SMITH CORP
ELECTRIC MOTOR DIVISION
4 HP, 230V, 60 ~, 1Φ, 3600 RPM, HERMETIC MOTOR
PERFORMANCE CURVES
TESTED AT 253V



$S_T T = 16.3 \text{ LB FT}$
 $B D T = 21.4 \text{ LB FT}$
 $S_T A = 121 \text{ AMPS}$
 $S_T C A P = 197 \text{ MFD}$
 $R U N C A P = 50 \text{ MFD}$

6-10-58 WBJ

C-907