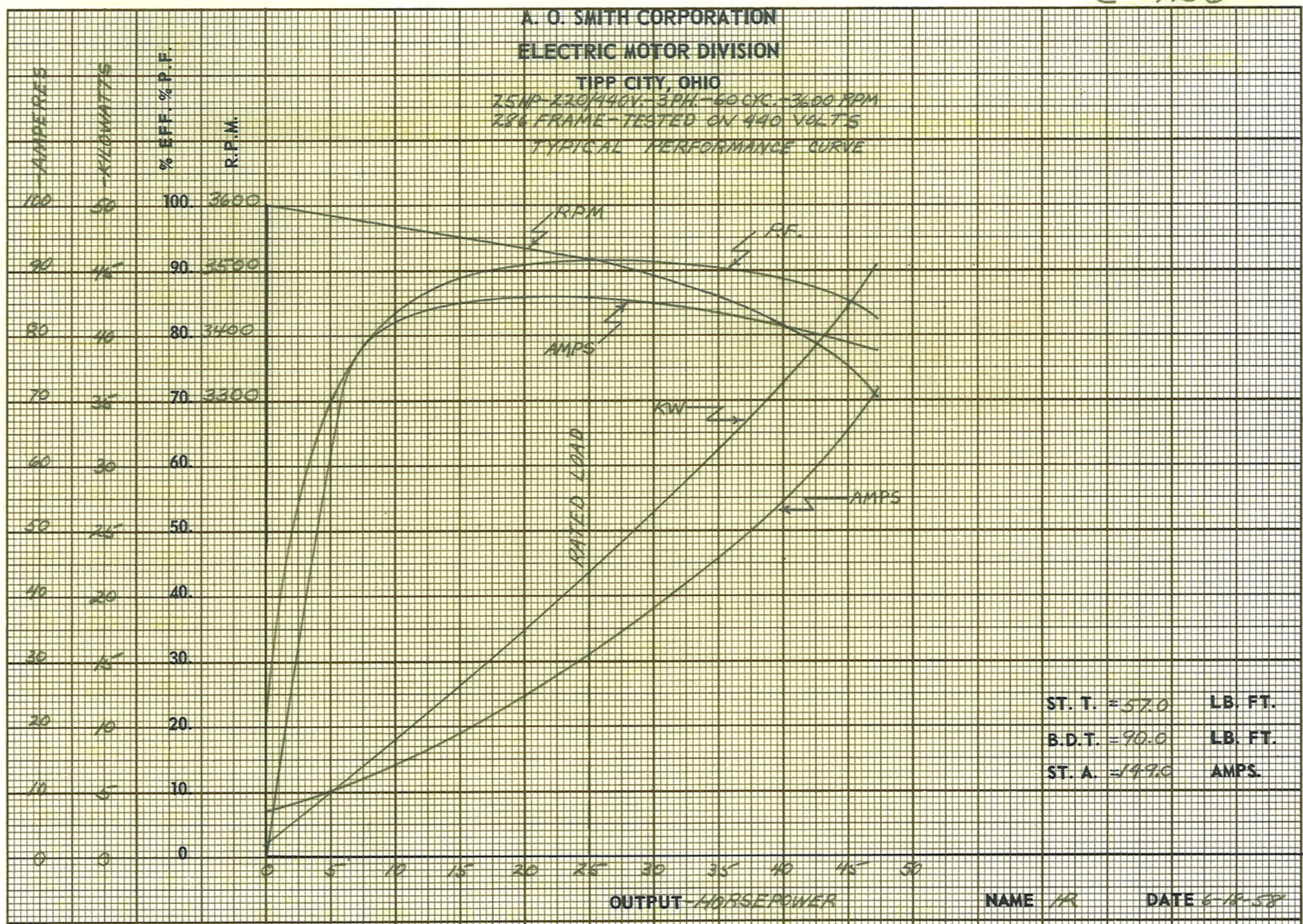


Uncontrolled Copy  
 CLEARPRINT CHARTS

C-926

A. O. SMITH CORPORATION  
 ELECTRIC MOTOR DIVISION

TIPP CITY, OHIO  
 25 HP - 220/440V. - 3 PH. - 60 CYC. - 3600 RPM  
 284 FRAME - TESTED ON 440 VOLTS  
 TYPICAL PERFORMANCE CURVE



ST. T. = 57.0 LB. FT.  
 B.D.T. = 90.0 LB. FT.  
 ST. A. = 149.6 AMPS.

NAME *HR* DATE *6-18-58*