

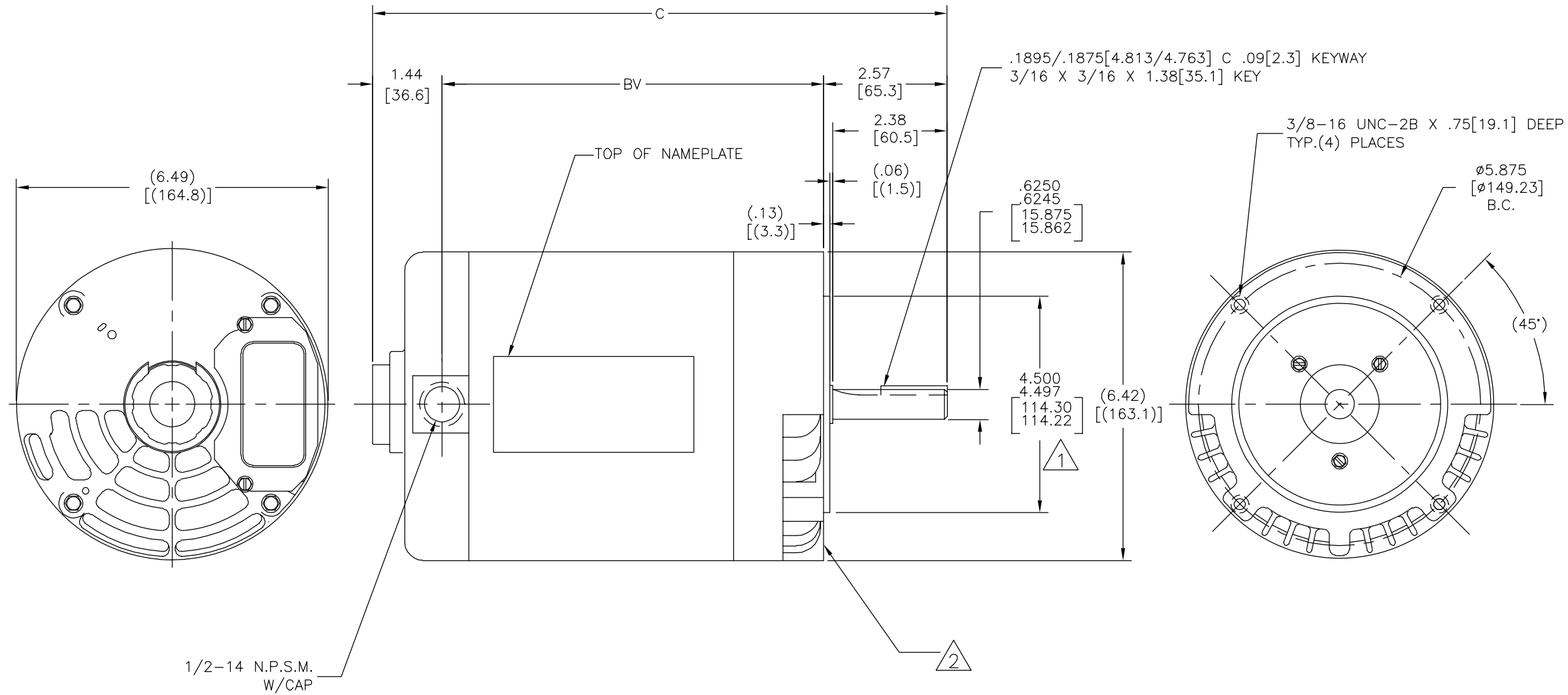
4

3

2

1

REV	ECO	REV BY	DATE	APPD	DATE
C	ECO-0037445	B.YU	08-27-2013	B.SHEN	08-27-2013



ALL DIMENSIONS SHOWN IN PARENTHESIS ARE REFERENCE DIMENSIONS. ALL OTHER DIMENSIONS ARE TOLERANCED PER THE FOLLOWING CHART UNLESS OTHERWISE SPECIFIED.

"C" DIM.	= +/- .055 [1.40]
SHAFT EXT.	= +/- .034 [0.86]
LEAD LENGTHS EXTENDED	= +/- 1.00 [25.4]
THRU-BOLTS	= +/- .050 [1.27]
ANGULAR DIMS	= +/- 2 DEGS

NOTES:

- 1 RABBIT DIAMETER IS CONCENTRIC WITH SHAFT CENTERLINE WITHIN .004 [.10] T.I.R.
- 2 FACE OF MOUNTING FLANGE IS PERPENDICULAR TO SHAFT CENTERLINE WITHIN .004 [.10] T.I.R.

-001	C26041	SP	C56	11.07 [281.2]	5.19 [131.8]
GRP.	PERFORMANCE CURVE#	TYPE	FRAME	C	BV

GEOMETRIC CHARACTERISTICS & SYMBOLS

- FLATNESS
- STRAIGHTNESS
- ∠ ANGULARITY
- ⊥ PERPENDICULARITY (SQUARENESS)
- // PARALLELISM
- ROUNDNESS (CIRCULARITY)
- ⊘ CYLINDRICITY
- △ PROFILE OF ANY SURFACE
- ∩ PROFILE OF ANY LINE
- ↗ RUNOUT
- ⊕ TRUE POSITION
- ◎ CONCENTRICITY
- ≡ SYMMETRY

ASME Y14.5M 1994

UNLESS OTHERWISE SPECIFIED DIM. TOLERANCES ARE AS FOLLOWS:

INCH	±.1	±.02	±.005	±.0005
mm	±0.5	±0.13	±0.013	

ANG. ±.50 DEG
REMOVE BURRS & BREAK SHARP EDGES:
INCH .003-.015 mm 0.1-0.4
CORNER FILLETS TO:
INCH .020 mm 0.5
MACHINE SURFACES:
INCH 125 mm 3.2

METRIC DIMS. SHOWN IN [BRACKETS]

DR BY: JBLANK 07-27-2004
APPD: BMS 08-27-2004
THIRD ANGLE PROJECTION

EDS DATE 11-11-2011
FORMAT REV H

CONFIDENTIAL: THIS DRAWING AND ITS INFORMATION ARE THE EXCLUSIVE AND CONFIDENTIAL PROPERTY OF REGAL-BELOIT CORPORATION AND ARE NOT TO BE DISCLOSED, DUPLICATED, DISTRIBUTED OR OTHERWISE USED WITHOUT THE WRITTEN CONSENT OF REGAL-BELOIT CORPORATION. -ALL RIGHTS RESERVED.

REGAL REGAL-BELOIT CORPORATION

DESCRIPTION: 0056 0-LINE BB OP/EN

SIZE C DWG NO 18845101-001

SCALE NONE SHEET 1

4

3

2

1