

GENERAL INFORMATION:

SHAFT RUNOUT: .001 T.I.R. PER INCH LENGTH OF EXTENSION.

END PLAY: .010 TO .063

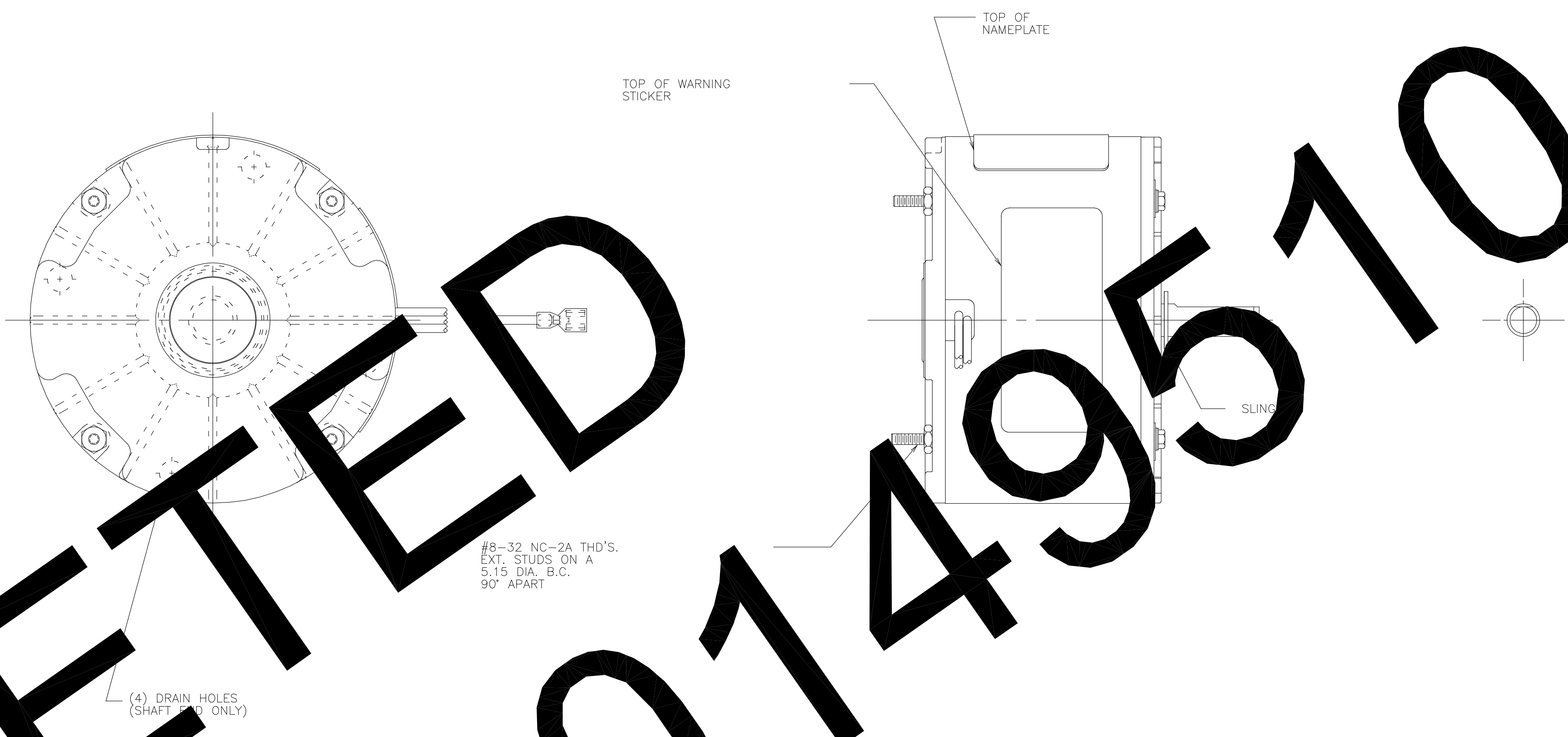
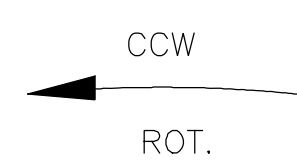
BEARINGS: SLEEVE

MOUNTING POSITION: VERTICAL SHAFT DOWN

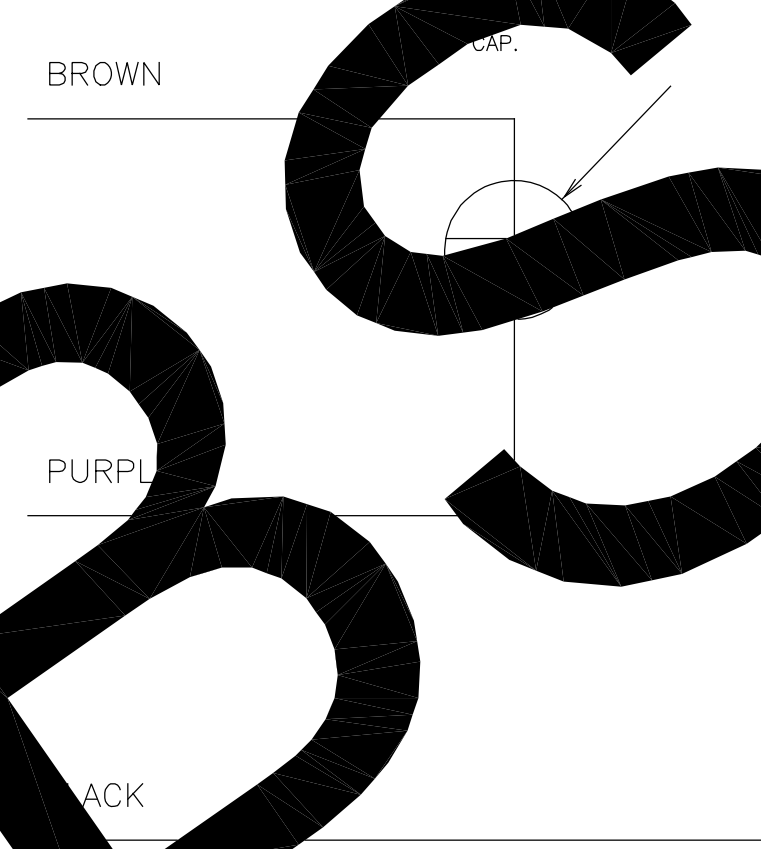
ELECTRICAL DATA:

OVERLOAD PROTECTOR: AUTOMATIC RESET (T.I. 7AM 36)

LEADS: NO. 18 GA., .06 THK., PVC 105°C INSUL.



MODEL: F48V54A01  
CUST. P/N: OTR1004  
HP: 1/8  
ROT: CCWLE  
RPM: 1650  
TYPE: UF  
FRAME: 48Y  
VOLTS: 200-230  
PH: 1  
AMPS: 0.7-0.9  
HZ: 60  
INS: B  
AMB: °C 40  
DUTY: ALTERNATE  
CAP.: 4 μF 370 V  
ENCL: ENCLOSED  
UL LOGO  
CSA LOGO  
THERMALLY PROTECTED

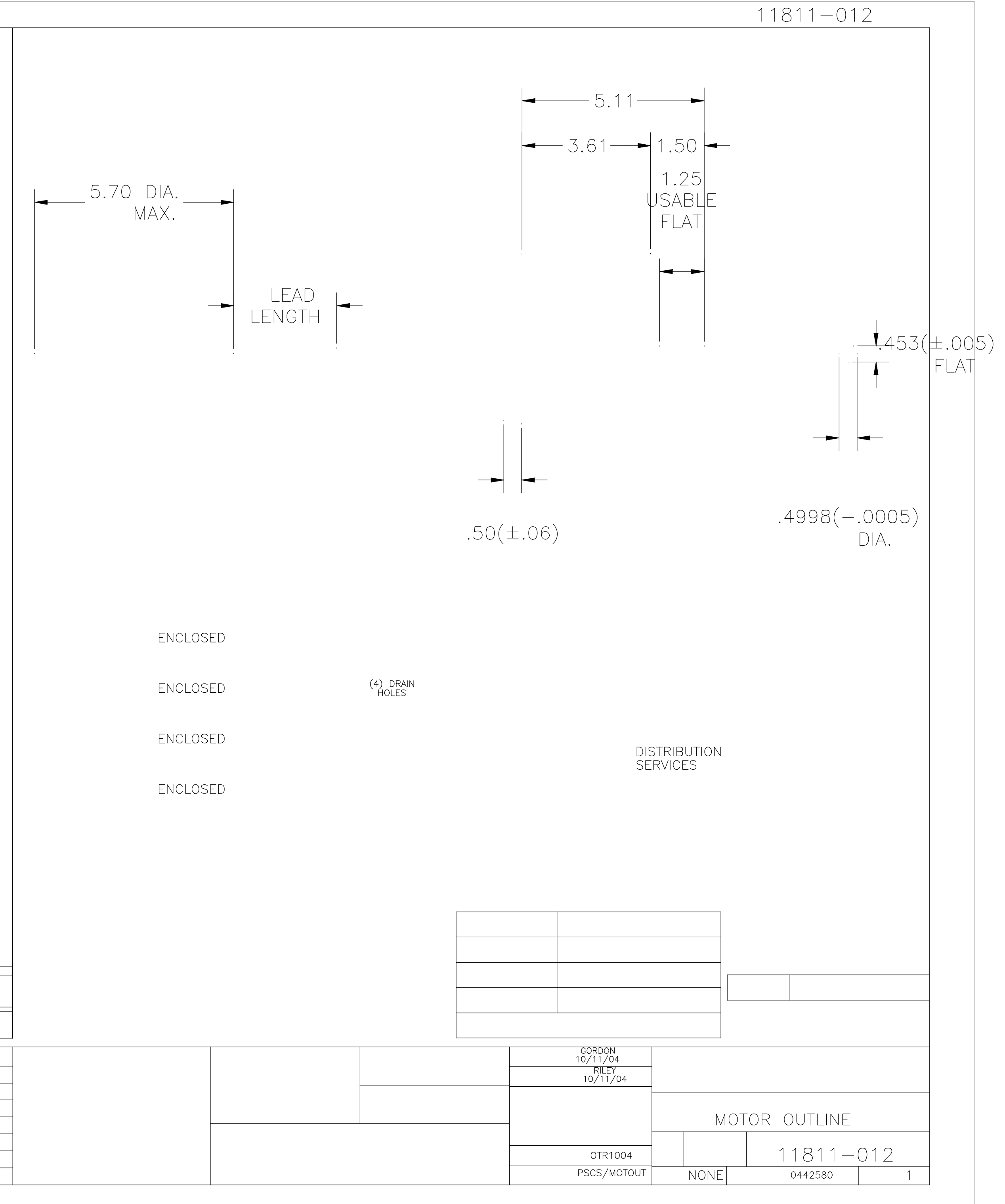


TORQUE @1650 RPM (25°C)

C32385 8.04 OZ. FT. 04425805 112 LR43341 4211-0

**OBSOLETE PER FECCO-0149510**

BROWN	24/26	25 PRE-INSUL FEMALE SPADE
PURPLE	24/26	25 PRE-INSUL FEMALE SPADE
BLACK	24/26	25 PRE-INSUL FEMALE SPADE
COLOR	LENGTH	TERMINAL OR STRIP LENGTH
LEAD DATA		



H		A	-	-	-	-
J		B				
K		C				
L		D				
M		E				
N		F				
P		G				

11811-012	
DISTRIBUTION SERVICES	
MOTOR OUTLINE	
OTR1004	11811-012
PSCS/MOTOUT	NONE 0442580 1