

4

3

2

1

GENERAL INFORMATION:

SHAFT RUNOUT: .001[.03] T.I.R. PER INCH LENGTH OF EXTENSION.

END PLAY: .010[.25] TO .063[1.60]

BEARINGS: SLEEVE

MOUNTING POSITION: VERTICAL SHAFT UP OR HORIZONTAL

ELECTRICAL DATA:

OVERLOAD PROTECTOR: AUTOMATIC RESET (T.I. 7AM 036)

LEADS: NO. 18 GA., .06[1.5] THK. EPDM 105°C INSUL.

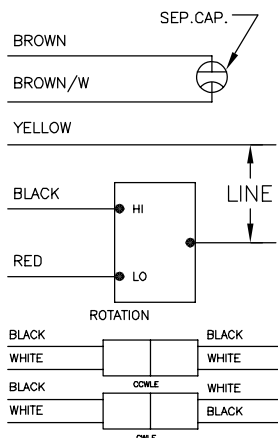
REVERSING LEAD: NO. 18 GA., .03[.8] THK. 125°C INSUL.

GROUND LEAD: NO. 18 GA., .03[.8] THK., (GREEN) INSUL.

NAMEPLATE DATA:

EXTERNAL CONNECTION DIAGRAM

MODEL NO.: F48SP6L10
CUST. P/N: FS1056
HP: 1/2
ROT.: REVERSIBLE
RPM: 1075/2 SPD
TYPE: UF
FRAME: 48Y
VOLTS: 208-230
PH: 1
AMPS: 2.5 (3.6 MAX)
HZ: 60
INS.: B
AMB.: 60° C
DUTY: AIR OVER
CAP.: 10 MFD/370 V
UL LOGO
CSA LOGO



PERFORMANCE CURVE NO.	TORQUE @1075 RPM (25°C)	APPROVED SAMPLE	UL COMPONENT		CSA	
			FILE #	CCN #	FILE #	CLASS #
C22806	55.0 OZ. FT.	EX11129	E46412	PRGY2	LR43341	260-ø-0

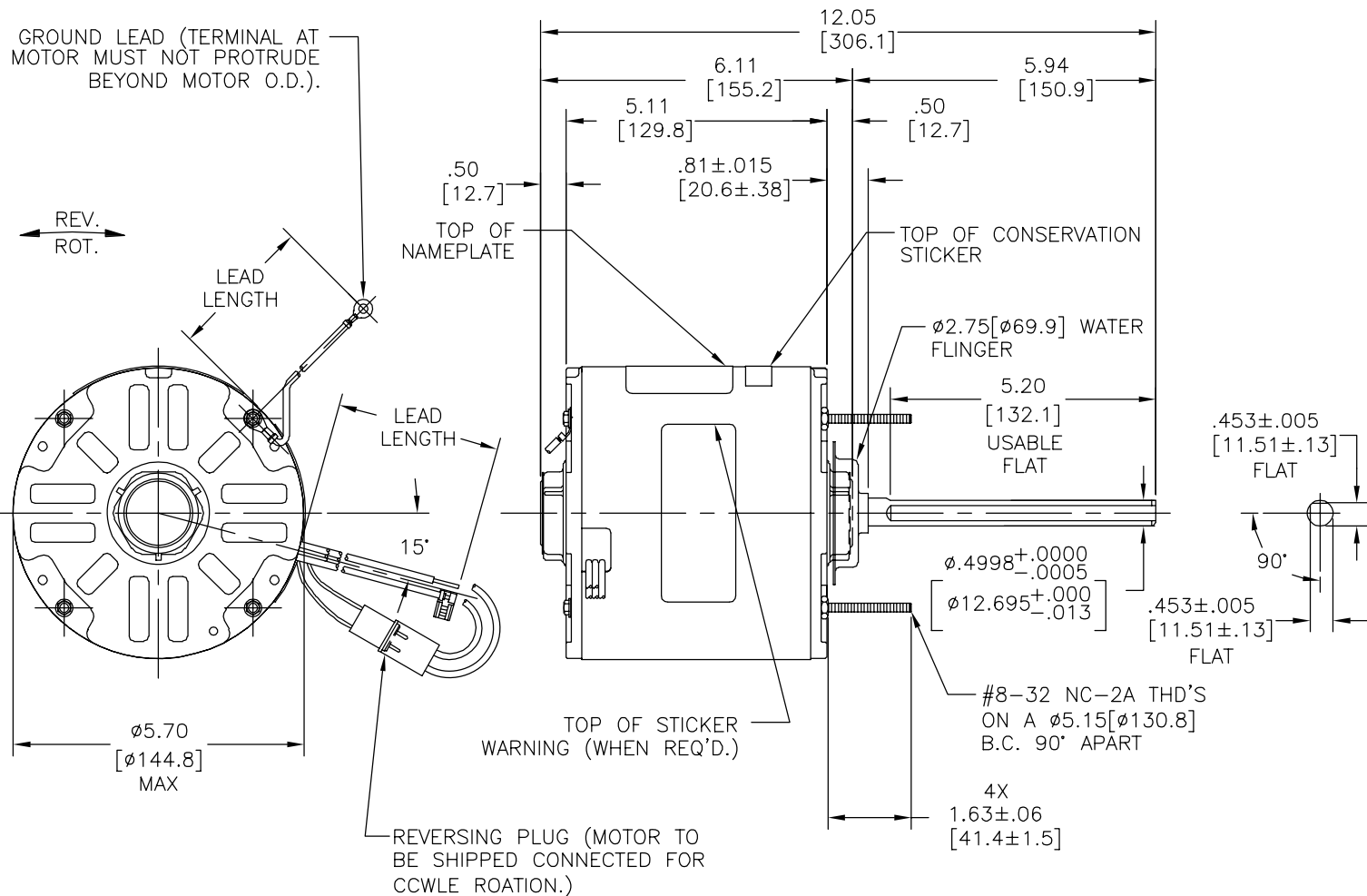
GEOMETRIC CHARACTERISTICS & SYMBOLS
□ FLATNESS
— STRAIGHTNESS
∠ ANGULARITY
⊥ PERPENDICULARITY (SQUARENESS)
// PARALLELISM
○ ROUNDNESS (CIRCULARITY)
⊘ CYLINDRICITY
△ PROFILE OF ANY SURFACE
⤴ PROFILE OF ANY LINE
↗ RUNOUT
⊕ TRUE POSITION
◎ CONCENTRICITY
≡ SYMMETRY

ASME Y14.5M 1994

REGAL-BELOIT CORPORATION (RBC) PROVIDES TECHNICAL ASSISTANCE TO OUR CUSTOMERS IN SEVERAL AREAS. SINCE RBC DOES NOT RECEIVE ALL DATA CONCERNING THE USE AND APPLICATION OF THE MOTOR, THE SUITABILITY OF THE MOTOR FOR THE APPLICATION MUST BE DETERMINED BY THE CUSTOMER.

DIMENSIONS WITHOUT TOLERANCES ARE FOR REFERENCE ONLY.

REV	ECO	REV BY	DATE	APPD	DATE
C	0025549	I. ORTIZ	04-30-2012	D. BALDERRAMA	04-30-2012



GREEN (GRD)	11/13 [279/330]	#10 EYELET
BLACK/WHITE	3.5/5.5 [89/140]	REVERSIBLE PLUG
BROWN/WHITE TRACER (CAP)	25/27 [635/686]	.25[6.4] FLAG
BROWN (CAP)	25/27 [635/686]	.25[6.4] FLAG
RED	25/27 [635/686]	.50[12.7] SKIN
BLACK	25/27 [635/686]	.50[12.7] SKIN
YELLOW	25/27 [635/686]	.50[12.7] SKIN
COLOR	LENGTH	TERMINAL OR STRIP LENGTH

LEAD DATA

MAIN FRAME - OLE	CLOSED
END FRAME - OLE	CLOSED
MAIN FRAME - LE	ENCLOSED
END FRAME - LE	OPEN
ENCLOSURE	

CUSTOMER	DISTRIBUTION SERVICES
----------	-----------------------

DR BY: THARP 12-01-1994

APPD: TPR 12-09-1994

THIRD ANGLE PROJECTION EDS DATE 11-11-2011
FORMAT REV G

CONFIDENTIAL: THIS DRAWING AND ITS INFORMATION ARE THE EXCLUSIVE AND CONFIDENTIAL PROPERTY OF REGAL-BELOIT CORPORATION AND ARE NOT TO BE DISCLOSED, DUPLICATED, DISTRIBUTED OR OTHERWISE USED WITHOUT THE WRITTEN CONSENT OF REGAL-BELOIT CORPORATION. -ALL RIGHTS RESERVED.



DESCRIPTION

MODEL-RFHP-48FR
OUTLINE

SIZE C DWG NO 11948-002

SCALE NONE SHEET 1

4

3

2

1

1	

安装位置:

接地线:

[illegible]


UL部件		CSA	
文件号	指南	文件号	指南
E46412	PRGY2	LR43341	260-ø-0

无引线端机壳	
无引线端端盖	
有引线端机壳	
有引线端端盖	
密封性	

用户	DISTRIBUTION SERVICES
----	--------------------------

ASME Y14.5M 1994

未注公差尺寸仅供参考。

 REGAL-BELOIT CORPORATION		
名称 MODEL-RFHP-48FR OUTLINE		
图幅 C	图号 11948-002	
比例 NONE	页号 1	

