

4

3

2

1

GENERAL INFORMATION:

SHAFT RUNOUT: .001[.03] T.I.R. PER INCH LENGTH OF EXTENSION.

END PLAY: .010[.25] TO .063[1.60]

BEARINGS: SLEEVE

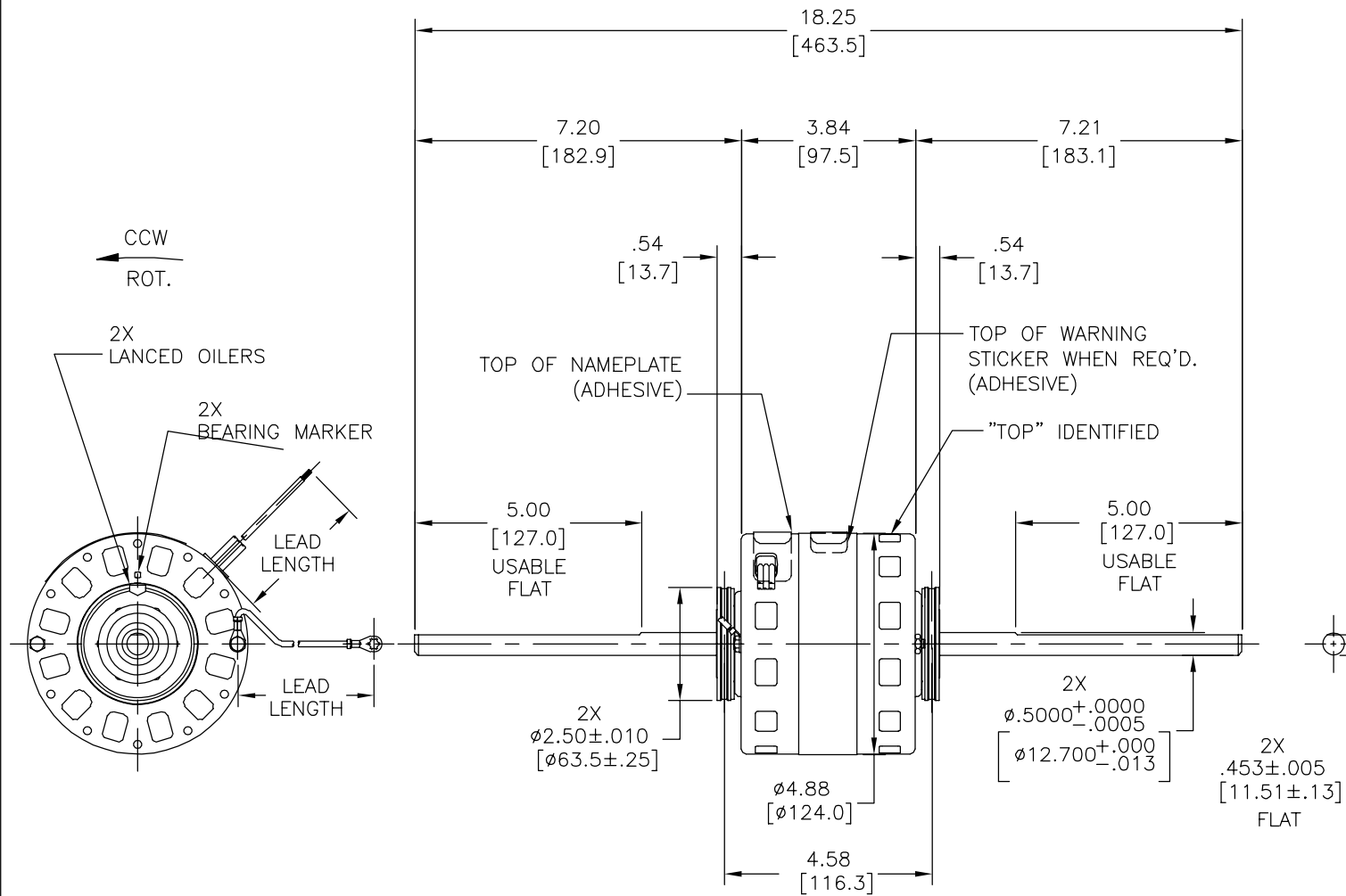
MOUNTING POSITION: HORIZONTAL

ELECTRICAL DATA:

OVERLOAD PROTECTOR: AUTOMATIC RESET (SENSATA 7AM 304)

LEADS: NO. 18 GA., .03[.8] THK., 125°C INSUL.

GROUND LEAD: NO. 18 GA., .03[.8] THK., GREEN INSUL.



GREEN(GRD)	5.5/6.5 [140/165]	#10 EYELET
RED	29.0/31.0 [737/787]	.25[6.4] SKIN
ORANGE	29.0/31.0 [737/787]	.25[6.4] SKIN
BLUE	29.0/31.0 [737/787]	.25[6.4] SKIN
BLACK	29.0/31.0 [737/787]	.25[6.4] SKIN
WHITE	29.0/31.0 [737/787]	.25[6.4] SKIN
COLOR	LENGTH	TERMINAL OR STRIP LENGTH

MAIN FRAME - OLE	OPEN
END FRAME - OLE	OPEN
MAIN FRAME - LE	OPEN
END FRAME - LE	OPEN

CUSTOMER	DISTRIBUTION SERVICE
----------	----------------------

NAMEPLATE DATA:	EXTERNAL CONNECTION DIAGRAM
MODEL NO.: 326P152 CUST. P/N: DCL4422 HP: 1/6,1/10,1/12,1/15 ROT.: CCWLE RPM: 1550/4 SPD. TYPE: FE FRAME: 42Y VOLTS: 115 PH: 1 AMPS: 4.0 HZ: 60 INS.: B AMB.: 40° C DUTY: AIR OVER CAP.: - ENCL: OPEN UL LOGO CSA LOGO THERMALLY PROTECTED TYPE C	

PERFORMANCE CURVE NO.	TORQUE @ 1550 RPM (25°C)	APPROVED SAMPLE	UL COMPONENT		CSA	
C30180	9.6 OZ. FT.	A7009D	FILE #	CCN #	FILE #	CLASS #
			E46412	PRGY2	LR43341	4211-01

DRAWING REVISION		REVISION BY	DATE	TOLERANCES UNLESS OTHERWISE SPECIFIED		DRAWN BY: PZ	DATE: 04-20-2011	APPROVED BY: CZ	DATE: 04-20-2011	REFERENCE	MATERIAL	PROCESS/FINISH
ECO		F.NAVARRO	08-21-2014	DEC.	INCH							
0055848		G.ALVIDREZ	08-21-2014	.X	±0.1	±2.5	±0.5	REGAL Regal Beloit America, Inc.				
ECO DESCRIPTION		SEE ECO		.XX	±0.02	±0.51		DESCRIPTION MODEL-RFHP-42FR				
SEE ECO				.XXX	±0.005	±0.127		OUTLINE				
				.XXXX	±0.0005	±0.0127		MATERIAL				
				REMOVE BURRS & BREAK SHARP EDGES .003/.015 (0.076/.381)			CORNER FILLETS .02 (1.51)			PROCESS/FINISH		
				MACHINED SURFACES 1/25 INCH/mm			THIRD ANGLE PROJECTION			SIZE DWG NO		
				mm SHOWN IN [BRACKETS]			C			DCL4422		
										SHEET 1		

4

3

2

1