



# WORLDWIDE ELECTRIC MOTOR DATA SHEET



## EP200-36-445/7TS

HORSEPOWER	200		
RPM / POLES	3600 / 2		
VOLTAGE / PHASE	230 / 460 V / 3		
FRAME	445/7TS		
ENCLOSURE / DEGREE OF PROTECTION	TEFC / IP55		
FREQUENCY	60 HZ Suitable For 50 HZ Operation With 1.0 SF		
FULL LOAD SPEED	3577 RPM		
SERVICE FACTOR	1.25 SF at 40° C / 1.0 SF at 55° C		
INSULATION CLASS	F		
FULL LOAD AMPS; 230 / 460	437 / 218.5 A		
LOCKED ROTOR AMPS (STARTING); 230 / 460	2900 / 1450 A		
NO LOAD CURRENT	93.4 / 46.7 A		
NEMA CODE LETTER	G		
EFFICIENCY / POWER FACTOR	<u>LOAD</u>	<u>EFF.</u>	<u>P.F.</u>
	100%	95.4%	0.90
	75%	94.9%	0.88
	50%	94.0%	0.81
DUTY CYCLE	S1 / Continuous		
TORQUE	<u>FULL LOAD</u>	<u>LRT</u>	<u>BDT</u>
	294.0 lb.ft.	185%	270%
SLIP	0.62%		
NEMA DESIGN	B		
MOMENT OF INERTIA	45.2 lb.ft. <sup>2</sup>		
NUMBER OF STARTS (Hot / Cold)	2 Hot / 3 Cold		
MAX. AMBIENT TEMPERATURE	40° C at 1.25 SF / 55° C at 1.0 SF		
MAX. ELEVATION	3300 Ft. Above Sea Level		
TEMPERATURE RISE (At Full Load)	80° C		
DE BEARING	6314		
ODE BEARING	6314		
GREASE TYPE	Mobil Polyrex EM		
MOUNTING	F1 (F2 Suitable)		
ROTATION	Bi-Directional		
APPROXIMATE WEIGHT	1730 lbs.		
AREA CLASSIFICATION	Class I, Division 2, Groups A, B, C, D		
TEMPERATURE CODE AT 40°C AMBIENT	T3A		
TEMPERATURE CODE AT 55°C AMBIENT	T3		
INVERTER RATING	10:1 CT / 20:1 VT PWM Type		
SPECIFICATION - In Accordance With	NEMA, CSA		



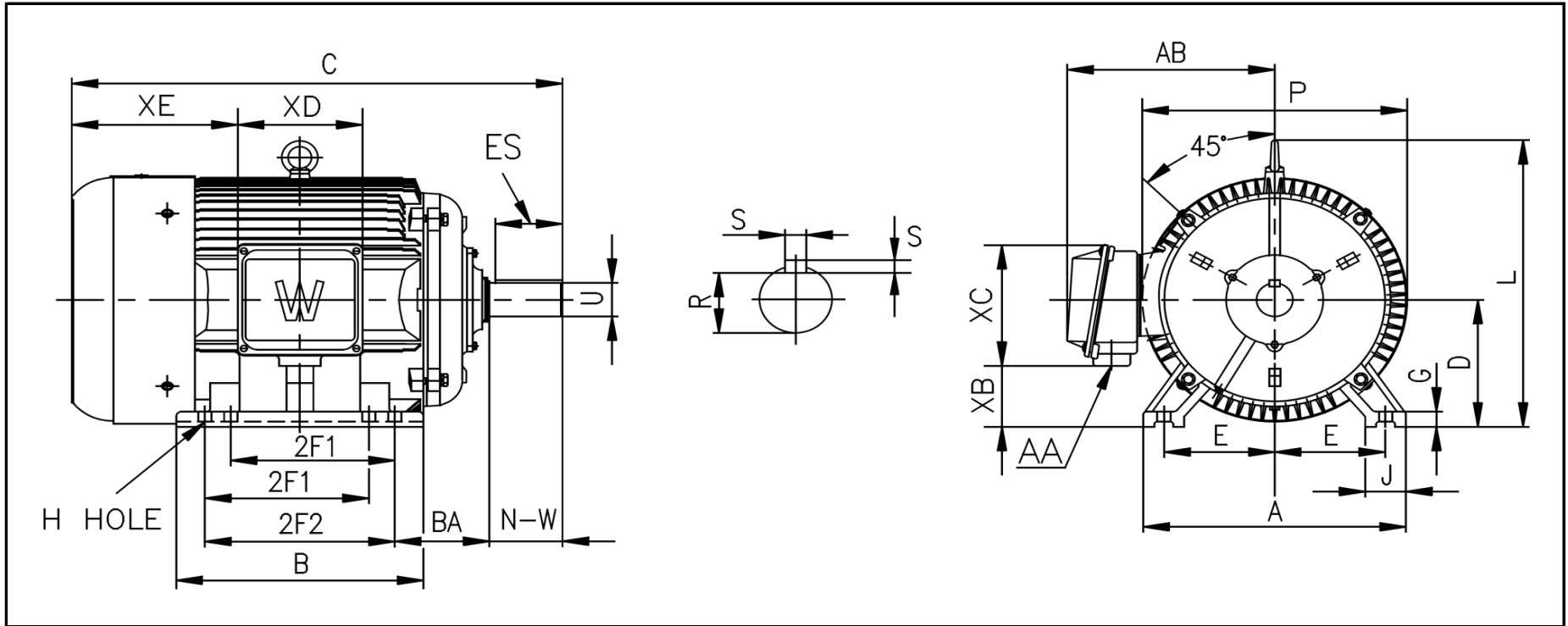
CC067A





# WORLDWIDE ELECTRIC MOTOR DRAWING

## EP-445/7TS



**DIMENSIONS - INCHES**

MOUNTING					A	B	C	D	G	J	P	L	AB
E	2F1	2F2	H	BA									
9	16.5	20	0.81	7.5	22	26.5	45.71	11	1.38	3.35	23.58	26.43	18.93

KEY		KEYSET	SHAFT		TERMINAL BOX				
S	ES	R	N-W	U	AA	XB	XC	XD	XE
0.625	3.03	2.021	4.75	2.375	2 x 3	5.67	11.73	11.34	18.9