



WORLDWIDE ELECTRIC MOTOR DATA SHEET



PEWWE150-18-445T

| | | | |
|---|--|-------------|-------------|
| HORSEPOWER | 150 | | |
| RPM / POLES | 1800 / 4 | | |
| VOLTAGE / PHASE | 230 / 460 V / 3 | | |
| FRAME | 445T | | |
| ENCLOSURE / DEGREE OF PROTECTION | TEFC / IP54 | | |
| FREQUENCY | 60 HZ Suitable For 50 HZ Operation With 1.0 SF | | |
| FULL LOAD SPEED | 1790 RPM | | |
| SERVICE FACTOR | 1.15 | | |
| INSULATION CLASS | F | | |
| FULL LOAD AMPS; 230 / 460 | 335 / 168 A Usable On 208 V At 370 A | | |
| LOCKED ROTOR AMPS (STARTING); 230 / 460 | 2170 / 1085 A | | |
| NO LOAD CURRENT | 111 / 55.5 A | | |
| NEMA CODE LETTER | G | | |
| EFFICIENCY / POWER FACTOR | <u>LOAD</u> | <u>EFF.</u> | <u>P.F.</u> |
| | 100% | 95.8% | 0.86 |
| | 75% | 95.9% | 0.83 |
| | 50% | 95.5% | 0.75 |
| DUTY CYCLE | CONTINUOUS | | |
| TORQUE | <u>FULL LOAD</u> | <u>LRT</u> | <u>BDT</u> |
| | 440 lb.ft. | 160% | 250% |
| | | | |
| SLIP | 0.55% | | |
| NEMA DESIGN | B | | |
| MOMENT OF INERTIA | 48.9 lb.ft. ² | | |
| SOUND PRESSURE LEVEL | 92 dB(A) | | |
| MAX. TIME LOCKED ROTOR (Hot) | 18 Seconds | | |
| MAX. AMBIENT TEMPERATURE | 40° C | | |
| MAX. ELEVATION | 3300 Ft. Above Sea Level | | |
| TEMPERATURE RISE (At Full Load) | 80° C | | |
| DE BEARING | NU318C3 | | |
| ODE BEARING | 6313C3 | | |
| REGREASING INT. - DE BEARING | 2,500 Hours (1.47 oz.) | | |
| REGREASING INT. - ODE BEARING | 6,500 Hours (0.86 oz.) | | |
| GREASE TYPE | Mobil Polyrex EM | | |
| MOUNTING | F1 (F2 Suitable) | | |
| ROTATION | Bi-Directional | | |
| C-FLANGE | --- | | |
| D-FLANGE | --- | | |
| SHAFT MATERIAL | 1045 Carbon Steel | | |
| CONNECTION DIAGRAM | 230 / 460 V - 12 Lead Δ | | |
| APPROXIMATE WEIGHT | 1632 lbs. | | |
| INVERTER RATING | 4:1 CT / 10:1 VT PWM Type | | |



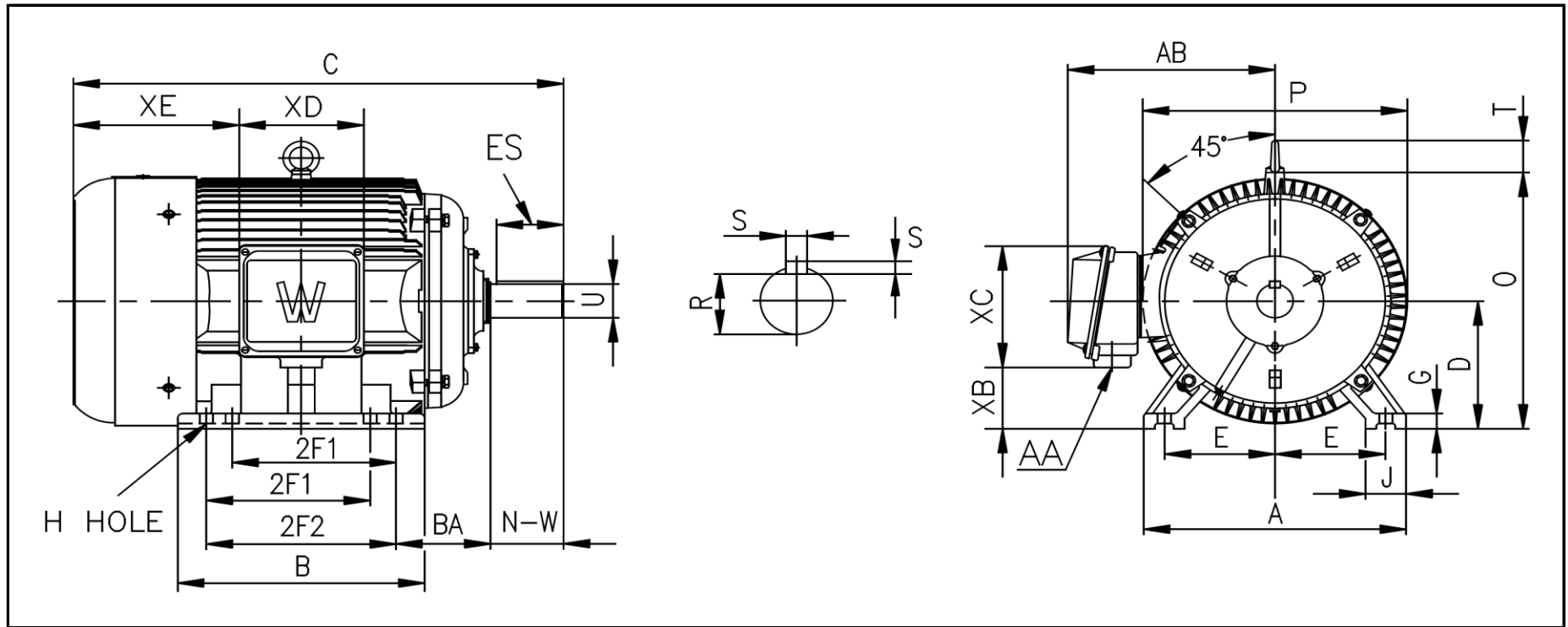
CC006A





WORLDWIDE ELECTRIC MOTOR DRAWING

PEWWE-445T



DIMENSIONS - INCHES

| MOUNTING | | | | | A | B | C | D | G | J | P | O | T | AB |
|----------|------|------|------|-----|----|------|------|----|------|------|-------|-------|------|-------|
| E | 2F1 | 2F2 | H | BA | | | | | | | | | | |
| 9 | 14.5 | 16.5 | 0.81 | 7.5 | 22 | 20.5 | 44.5 | 11 | 1.38 | 3.35 | 23.43 | 22.97 | 3.46 | 19.41 |

| KEY | | KEYSET | SHAFT | | TERMINAL BOX | | | | |
|-------|------|--------|-------|-------|--------------|------|-------|-------|-------|
| S | ES | R | N-W | U | AA | XB | XC | XD | XE |
| 0.875 | 6.91 | 2.88 | 8.5 | 3.375 | 2 x 3 | 5.67 | 11.73 | 11.34 | 14.37 |

REVISED - 08/14/13