



WORLDWIDE ELECTRIC MOTOR DATA SHEET



EP150-18-445T

HORSEPOWER	150		
RPM / POLES	1800 / 4		
VOLTAGE / PHASE	230 / 460 V / 3		
FRAME	445T		
ENCLOSURE / DEGREE OF PROTECTION	TEFC / IP55		
FREQUENCY	60 HZ Suitable For 50 HZ Operation With 1.0 SF		
FULL LOAD SPEED	1790 RPM		
SERVICE FACTOR	1.25 SF at 40° C / 1.0 SF at 55° C		
INSULATION CLASS	F		
FULL LOAD AMPS; 230 / 460	342 / 171 A		
LOCKED ROTOR AMPS (STARTING); 230 / 460	2170 / 1085 A		
NO LOAD CURRENT	104.4 / 52.2 A		
NEMA CODE LETTER	G		
EFFICIENCY / POWER FACTOR	<u>LOAD</u>	<u>EFF.</u>	<u>P.F.</u>
	100%	95.8%	0.86
	75%	95.6%	0.85
	50%	92.7%	0.81
DUTY CYCLE	S1 / Continuous		
TORQUE	<u>FULL LOAD</u>	<u>LRT</u>	<u>BDT</u>
	443.0 lb.ft.	180%	250%
SLIP	0.53%		
NEMA DESIGN	B		
MOMENT OF INERTIA	69.26 lb.ft. ²		
NUMBER OF STARTS (Hot / Cold)	2 Hot / 3 Cold		
MAX. AMBIENT TEMPERATURE	40° C at 1.25 SF / 55° C at 1.0 SF		
MAX. ELEVATION	3300 Ft. Above Sea Level		
TEMPERATURE RISE (At Full Load)	80° C		
DE BEARING	NU318		
ODE BEARING	6314		
GREASE TYPE	Mobil Polyrex EM		
MOUNTING	F1 (F2 Suitable)		
ROTATION	Bi-Directional		
APPROXIMATE WEIGHT	2062 lbs.		
AREA CLASSIFICATION	Class I, Division 2, Groups A, B, C, D		
TEMPERATURE CODE AT 40°C AMBIENT	T3A		
TEMPERATURE CODE AT 55°C AMBIENT	T3		
INVERTER RATING	10:1 CT / 20:1 VT PWM Type		
SPECIFICATION - In Accordance With	NEMA, CSA		

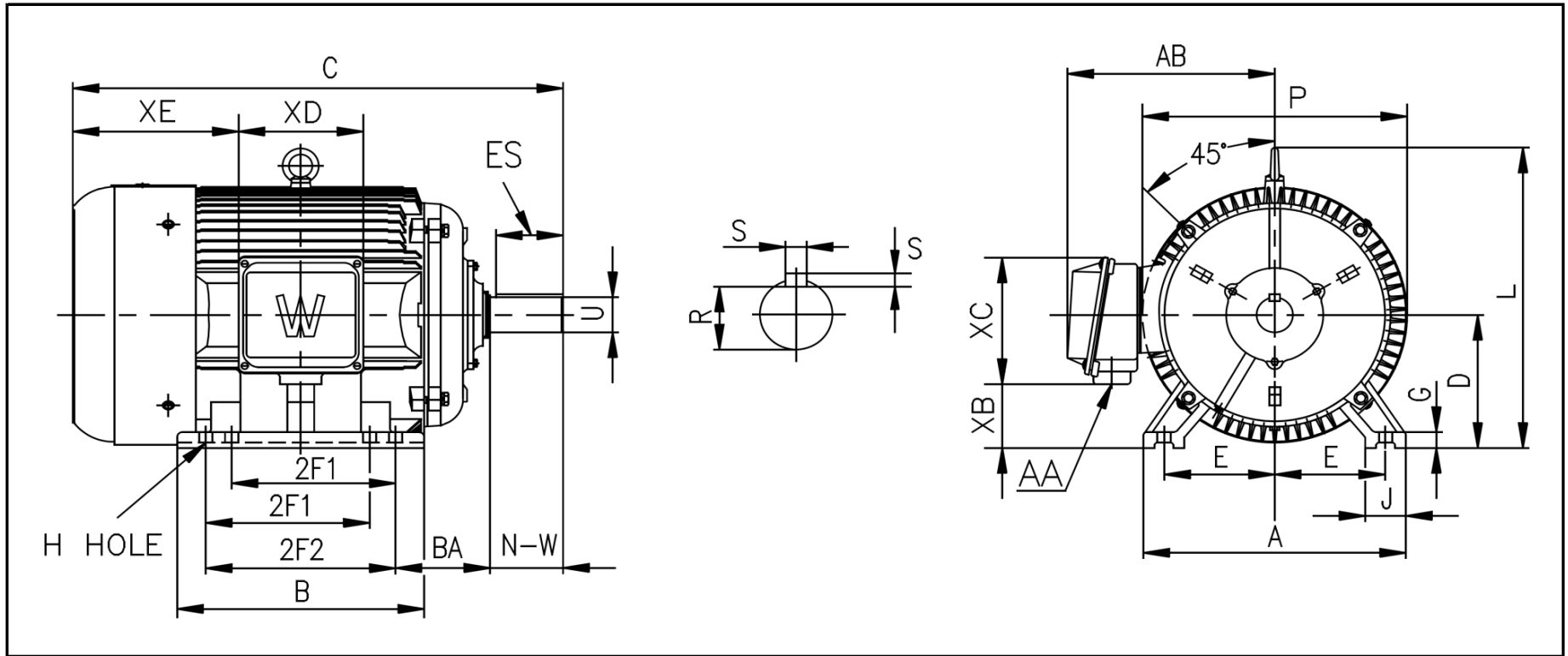


CC067A



WORLDWIDE ELECTRIC MOTOR DRAWING

EP-445T



DIMENSIONS - INCHES

MOUNTING					A	B	C	D	G	J	P	L	AB
E	2F1	2F2	H	BA									
9	14.5	16.5	0.81	7.5	22	20.5	45.7	11	1.38	3.35	23.58	26.43	18.93

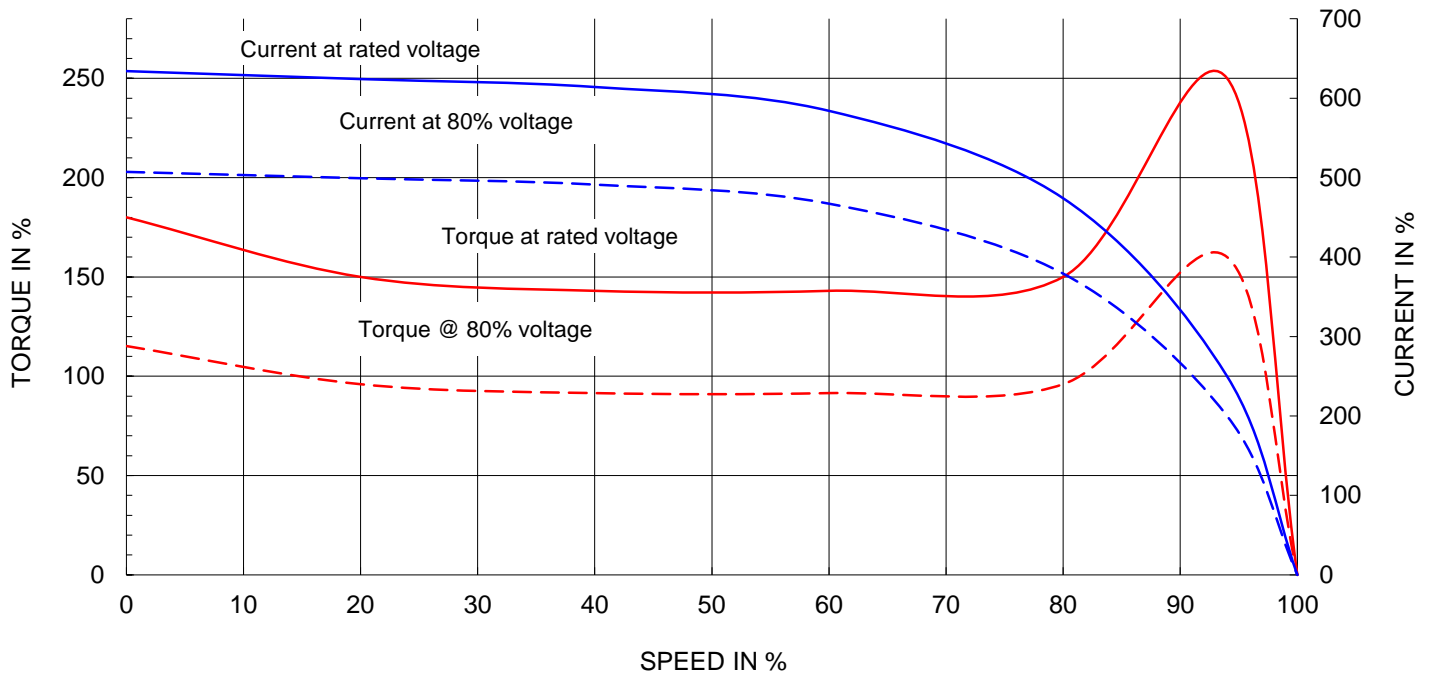
KEY		KEYSET	SHAFT		TERMINAL BOX				
S	ES	R	N-W	U	AA	XB	XC	XD	XE
0.875	6.91	2.88	8.5	3.375	2 x 3	5.67	11.73	11.34	14.37



Motor Performance Curves

Motor type:	EPIC				
Output rating (HP)	150	FL Speed:	1790		
Full Load Torque :	443 lb.ft	LRT (% FLT):	180	460 volt FLA:	171.0
Rotor Wk ² :	69.3 lb-ft ²	BDT (% FLT):	250	230 volt FLA:	342.0

SPEED VS TORQUE & CURRENT CURVE



OUTPUT VS EFF., P.F & CURRENT CURVE

