



# WORLDWIDE ELECTRIC MOTOR DATA SHEET



## PEWWE125-9-445/7T

HORSEPOWER	125
RPM / POLES	900 / 8
VOLTAGE / PHASE	230 / 460 V / 3
FRAME	445/7T
ENCLOSURE / DEGREE OF PROTECTION	TEFC / IP55
FREQUENCY	60 HZ Suitable For 50 HZ Operation With 1.0 SF
FULL LOAD SPEED	890 RPM
SERVICE FACTOR	1.25
INSULATION CLASS	F
FULL LOAD AMPS; 230 / 460	336 / 168 A (Usable On 208V At 371 A)
LOCKED ROTOR AMPS (STARTING); 230 / 460	1815 / 907.5 A
NO LOAD CURRENT	151 / 75.5 A
NEMA CODE LETTER	G
EFFICIENCY / POWER FACTOR	<u>LOAD</u> <u>EFF.</u> <u>P.F.</u>
	100 %                      94.1%                      0.74
	75 %                      94.4%                      0.70
DUTY CYCLE	50 %                      93.9%                      0.60
	S1 / Continuous
TORQUE	<u>FULL LOAD</u> <u>LRT</u> <u>BDT</u>
	737 lb.ft.                      140%                      200%
SLIP	1.1%
NEMA DESIGN	B
MOMENT OF INERTIA	74.7 lb.ft. <sup>2</sup>
MAX. TIME LOCKED ROTOR (Hot)	12 Seconds
SOUND PRESSURE LEVEL	75 dB (A)
MAX. AMBIENT TEMPERATURE	40° C
MAX. ELEVATION	3300 Ft.
TEMPERATURE RISE (At Full Load)	80° C
DE BEARING	NU319 C3
ODE BEARING	6313 C3
REGREASING INT. - DE BEARING	2500 Hours
REGREASING INT. - ODE BEARING	4200 Hours
GREASE TYPE	SKF LGHP 2
MOUNTING	F1 (F2 Suitable)
ROTATION	Bi-Directional
SHAFT MATERIAL	1045 Carbon Steel
INVERTER RATING	10:1 CT / 20:1 VT PWM Type
CONNECTION DIAGRAM	230 / 460 V - 12 Lead Δ
AREA CLASSIFICATION	Class I, Division 2, Groups A, B, C, D
APPROXIMATE WEIGHT	1819 lbs.



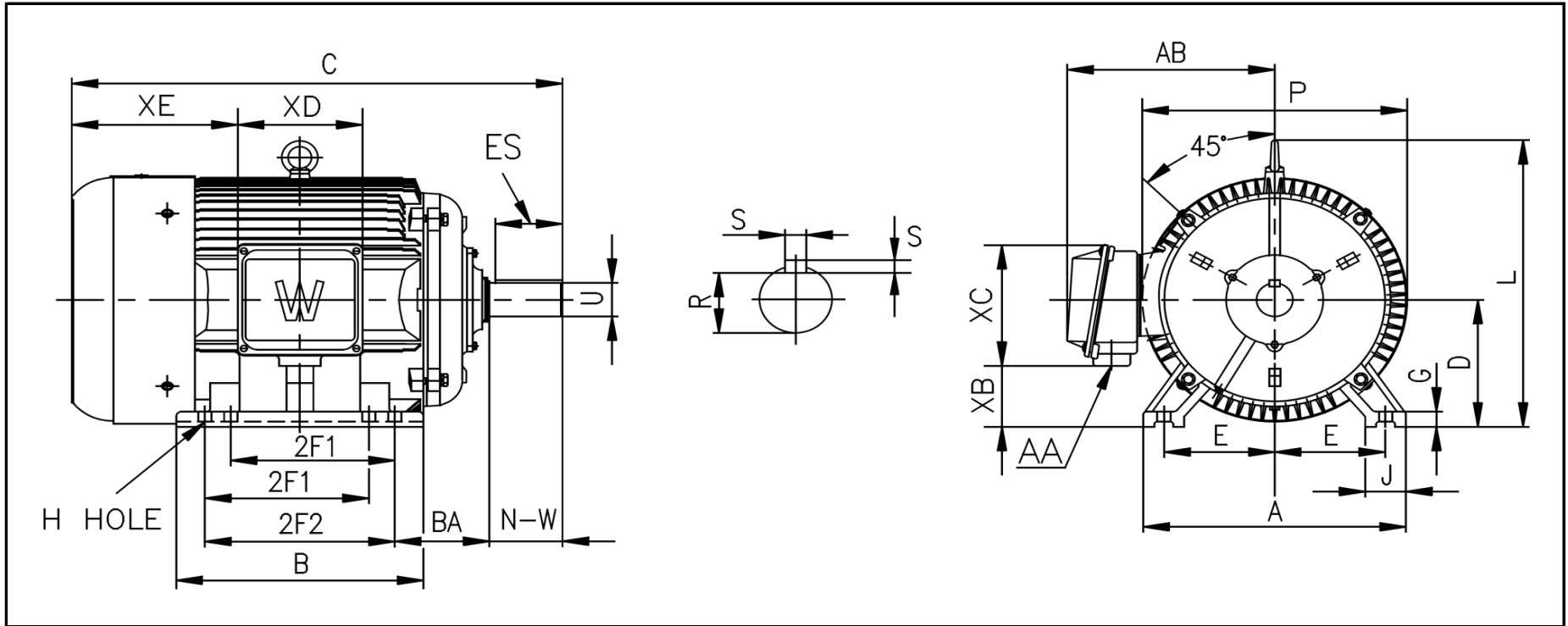
CC006A





# WORLDWIDE ELECTRIC MOTOR DRAWING

## PEWWE-445/7T



**DIMENSIONS - INCHES**

MOUNTING					A	B	C	D	G	J	P	L	AB
E	2F1	2F2	H	BA									
9	16.5	20	0.81	7.5	22	24	47.4	11	1.38	3.4	23.5	23	20

KEY		KEYSET	SHAFT		TERMINAL BOX				
S	ES	R	N-W	U	AA	XB	XC	XD	XE
0.875	6.91	2.88	8.5	3.375	2 x 3	5.9	12	11.5	17.5