



# WORLDWIDE ELECTRIC MOTOR DATA SHEET



## PEWWE125-12-445T

HORSEPOWER	125		
RPM / POLES	1200 / 6		
VOLTAGE / PHASE	230 / 460 V / 3		
FRAME	445T		
ENCLOSURE / DEGREE OF PROTECTION	TEFC / IP54		
FREQUENCY	60 HZ Suitable For 50 HZ Operation With 1.0 SF		
FULL LOAD SPEED	1195 RPM		
SERVICE FACTOR	1.15		
INSULATION CLASS	F		
FULL LOAD AMPS; 230 / 460	290 / 145 A Usable On 208 V At 321 A		
LOCKED ROTOR AMPS (STARTING); 230 / 460	1815 / 907.5 A		
NO LOAD CURRENT	120 / 60.0 A		
NEMA CODE LETTER	G		
EFFICIENCY / POWER FACTOR	<u>LOAD</u>	<u>EFF.</u>	<u>P.F.</u>
	100%	95.0%	0.82
	75%	94.9%	0.78
	50%	94.5%	0.68
DUTY CYCLE	CONTINUOUS		
TORQUE	<u>FULL LOAD</u>	<u>LRT</u>	<u>BDT</u>
	549 lb.ft.	150%	260%
	SLIP	0.42%	
NEMA DESIGN	B		
MOMENT OF INERTIA	66.6 lb.ft. <sup>2</sup>		
SOUND PRESSURE LEVEL	92 dB(A)		
MAX. TIME LOCKED ROTOR (Hot)	15 Seconds		
MAX. AMBIENT TEMPERATURE	40° C		
MAX. ELEVATION	3300 Ft. Above Sea Level		
TEMPERATURE RISE (At Full Load)	80° C		
DE BEARING	NU318C3		
ODE BEARING	6313C3		
REGREASING INT. - DE BEARING	4,300 Hours (1.47 oz.)		
REGREASING INT. - ODE BEARING	11,000 Hours (0.86 oz.)		
GREASE TYPE	Mobil Polyrex EM		
MOUNTING	F1 (F2 Suitable)		
ROTATION	Bi-Directional		
C-FLANGE	---		
D-FLANGE	---		
SHAFT MATERIAL	1045 Carbon Steel		
CONNECTION DIAGRAM	230 / 460 V - 12 Lead Δ		
APPROXIMATE WEIGHT	1632 lbs.		
INVERTER RATING	4:1 CT / 10:1 VT PWM Type		



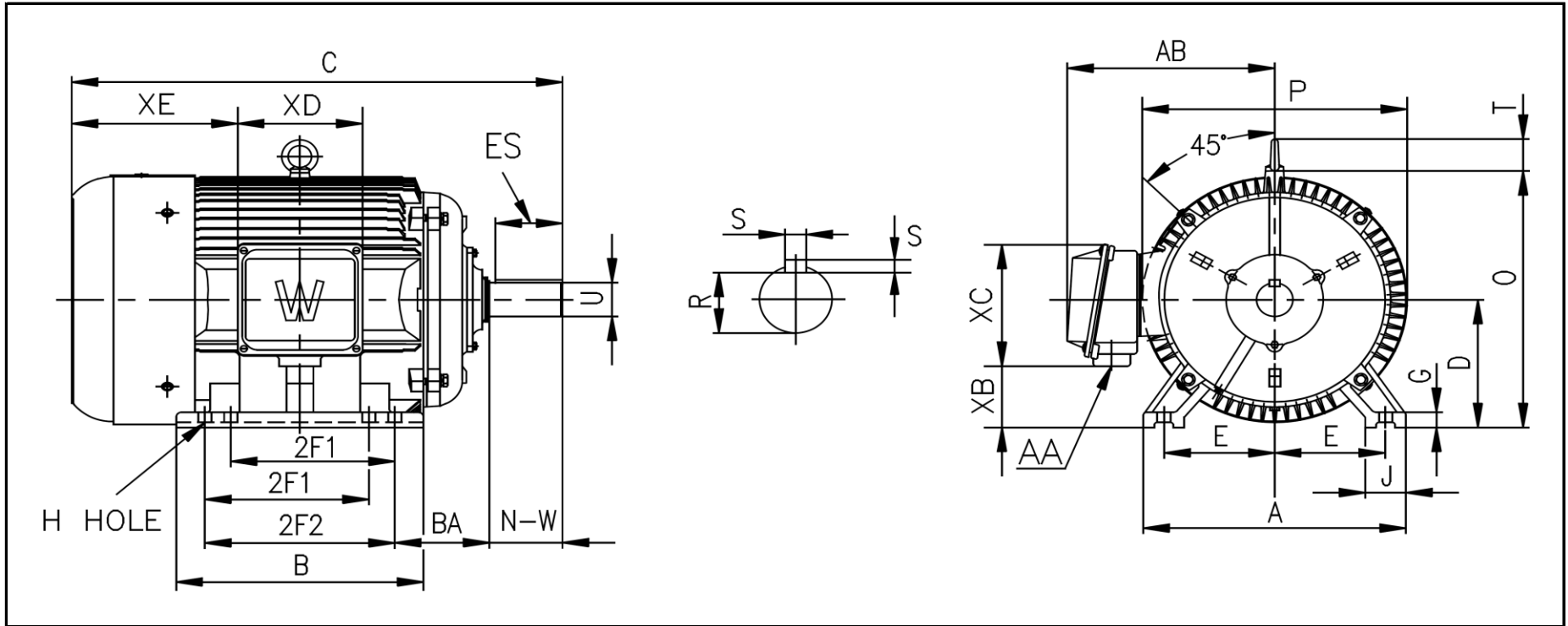
CC006A





# WORLDWIDE ELECTRIC MOTOR DRAWING

## PEWWE-445T



**DIMENSIONS - INCHES**

MOUNTING					A	B	C	D	G	J	P	O	T	AB
E	2F1	2F2	H	BA										
9	14.5	16.5	0.81	7.5	22	20.5	44.5	11	1.38	3.35	23.43	22.97	3.46	19.41

KEY		KEYSET	SHAFT		TERMINAL BOX				
S	ES	R	N-W	U	AA	XB	XC	XD	XE
0.875	6.91	2.88	8.5	3.375	2 x 3	5.67	11.73	11.34	14.37