



WORLDWIDE ELECTRIC MOTOR DATA SHEET



PEWWE125-18-444TBB

HORSEPOWER	125		
RPM / POLES	1800 / 4		
VOLTAGE / PHASE	230 / 460 V / 3		
FRAME	444T		
ENCLOSURE / DEGREE OF PROTECTION	TEFC / IP54		
FREQUENCY	60 HZ Suitable For 50 HZ Operation With 1.0 SF		
FULL LOAD SPEED	1790 RPM		
SERVICE FACTOR	1.15		
INSULATION CLASS	F		
FULL LOAD AMPS; 230 / 460	275 / 137 A Usable On 208 V At 304 A		
LOCKED ROTOR AMPS (STARTING); 230 / 460	1815 / 907.5 A		
NO LOAD CURRENT	88.0 / 44.0 A		
NEMA CODE LETTER	G		
EFFICIENCY / POWER FACTOR	<u>LOAD</u>	<u>EFF.</u>	<u>P.F.</u>
	100%	95.4%	0.86
	75%	95.5%	0.82
	50%	95.1%	0.74
DUTY CYCLE	CONTINUOUS		
TORQUE	<u>FULL LOAD</u>	<u>LRT</u>	<u>BDT</u>
	367 lb.ft.	160%	250%
	SLIP	0.55%	
NEMA DESIGN	B		
MOMENT OF INERTIA	42.9 lb.ft. ²		
SOUND PRESSURE LEVEL	90 dB(A)		
MAX. TIME LOCKED ROTOR (Hot)	15 Seconds		
MAX. AMBIENT TEMPERATURE	40° C		
MAX. ELEVATION	3300 Ft. Above Sea Level		
TEMPERATURE RISE (At Full Load)	80° C		
DE BEARING	6318C3		
ODE BEARING	6313C3		
REGREASING INT. - DE BEARING	2,500 Hours (1.47 oz.)		
REGREASING INT. - ODE BEARING	6,500 Hours (0.86 oz.)		
GREASE TYPE	Mobil Polyrex EM		
MOUNTING	F1 (F2 Suitable)		
ROTATION	Bi-Directional		
C-FLANGE	PEW444/5TC		
D-FLANGE	PEW444/5TD		
SHAFT MATERIAL	1045 Carbon Steel		
CONNECTION DIAGRAM	230 / 460 V - 12 Lead Δ		
APPROXIMATE WEIGHT	1455 lbs.		
INVERTER RATING	4:1 CT / 10:1 VT PWM Type		



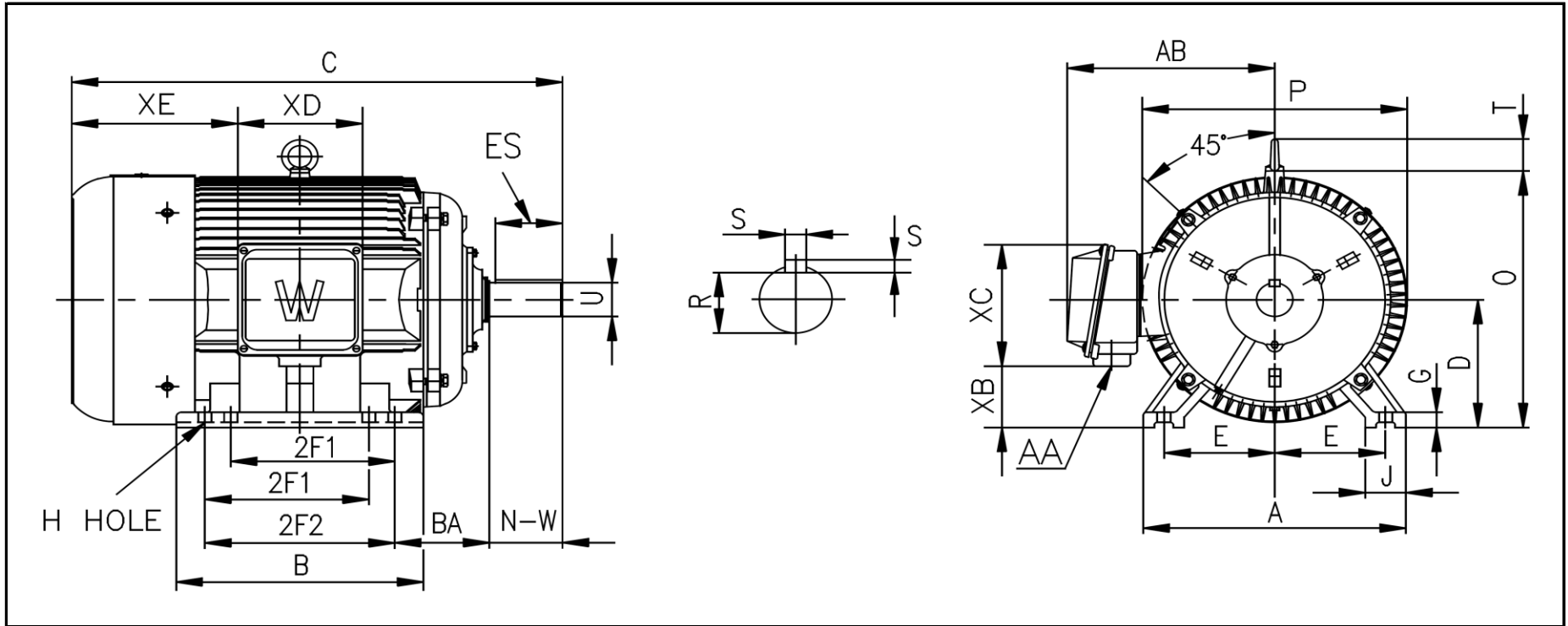
CC006A





WORLDWIDE ELECTRIC MOTOR DRAWING

PEWWE-444T



DIMENSIONS - INCHES

MOUNTING					A	B	C	D	G	J	P	O	T	AB
E	2F1	2F2	H	BA										
9	14.5	---	0.81	7.5	22	18.5	42.52	11	1.38	3.35	23.43	22.97	3.46	19.41

KEY		KEYSET	SHAFT		TERMINAL BOX				
S	ES	R	N-W	U	AA	XB	XC	XD	XE
0.875	6.91	2.88	8.5	3.375	2 x 3	5.67	11.73	11.34	13.39