



WORLDWIDE ELECTRIC MOTOR DATA SHEET



EP100-18-405TBB

HORSEPOWER	100		
RPM / POLES	1800 / 4		
VOLTAGE / PHASE	230 / 460 V / 3		
FRAME	405T		
ENCLOSURE / DEGREE OF PROTECTION	TEFC / IP55		
FREQUENCY	60 HZ Suitable For 50 HZ Operation With 1.0 SF		
FULL LOAD SPEED	1790 RPM		
SERVICE FACTOR	1.25 SF at 40° C / 1.0 SF at 55° C		
INSULATION CLASS	F		
FULL LOAD AMPS; 230 / 460	228.6 / 114.3 A		
LOCKED ROTOR AMPS (STARTING); 230 / 460	1450 / 725 A		
NO LOAD CURRENT	75.0 / 37.5 A		
NEMA CODE LETTER	G		
EFFICIENCY / POWER FACTOR	<u>LOAD</u>	<u>EFF.</u>	<u>P.F.</u>
	100%	95.4%	0.86
	75%	95.2%	0.82
	50%	94.7%	0.72
DUTY CYCLE	S1 / Continuous		
TORQUE	<u>FULL LOAD</u>	<u>LRT</u>	<u>BDT</u>
	293.2 lb.ft.	220%	240%
SLIP	0.56%		
NEMA DESIGN	B		
MOMENT OF INERTIA	45.5 lb.ft. ²		
NUMBER OF STARTS (Hot / Cold)	2 Hot / 3 Cold		
MAX. AMBIENT TEMPERATURE	40° C at 1.25 SF / 55° C at 1.0 SF		
MAX. ELEVATION	3300 Ft. Above Sea Level		
TEMPERATURE RISE (At Full Load)	80° C		
DE BEARING	6316		
ODE BEARING	6313		
GREASE TYPE	Mobil Polyrex EM		
MOUNTING	F1 (F2 Suitable)		
ROTATION	Bi-Directional		
APPROXIMATE WEIGHT	1198 lbs.		
AREA CLASSIFICATION	Class I, Division 2, Groups A, B, C, D		
TEMPERATURE CODE AT 40°C AMBIENT	T3A		
TEMPERATURE CODE AT 55°C AMBIENT	T3		
INVERTER RATING	10:1 CT / 20:1 VT PWM Type		
SPECIFICATION - In Accordance With	NEMA, CSA		



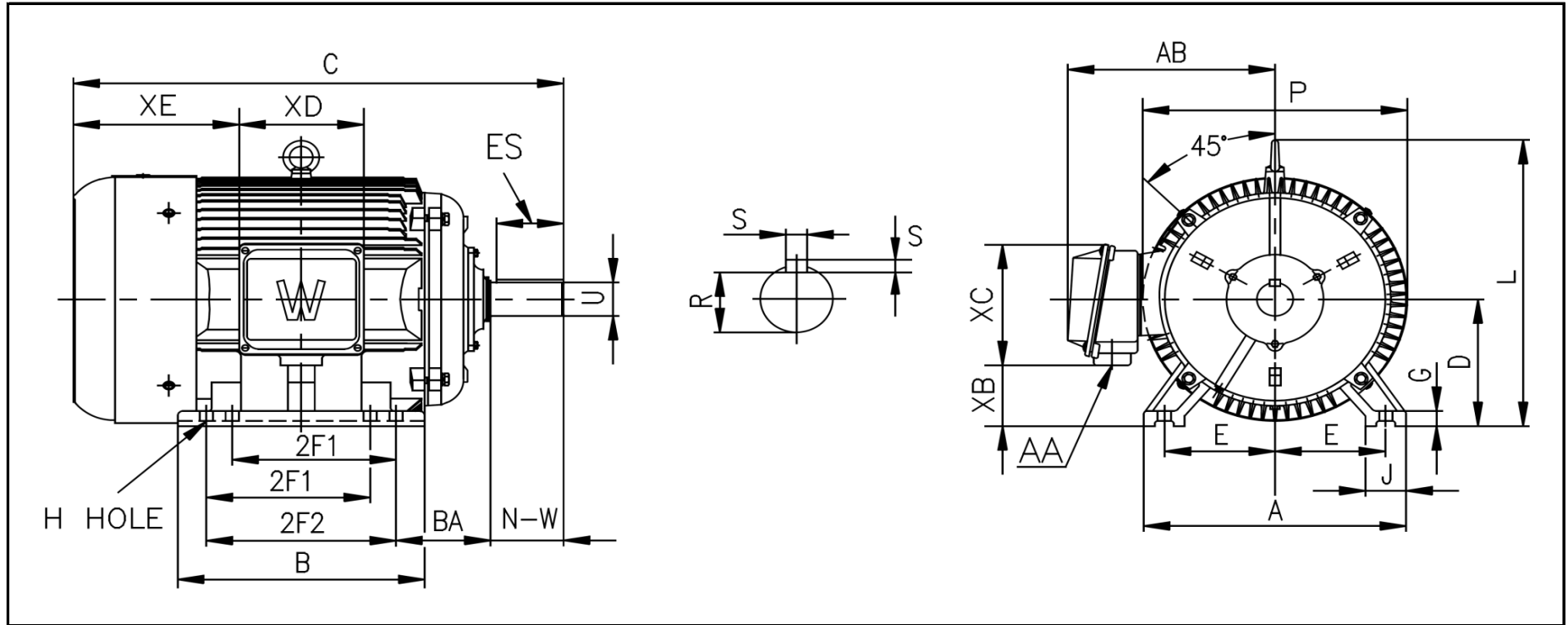
CC067A





WORLDWIDE ELECTRIC MOTOR DRAWING

EP-405T



DIMENSIONS - INCHES

MOUNTING					A	B	C	D	G	J	P	L	AB
E	2F1	2F2	H	BA									
8	12.25	13.75	0.81	6.62	19.29	17.8	38.3	10	1.18	3.15	21.73	23.62	18.11

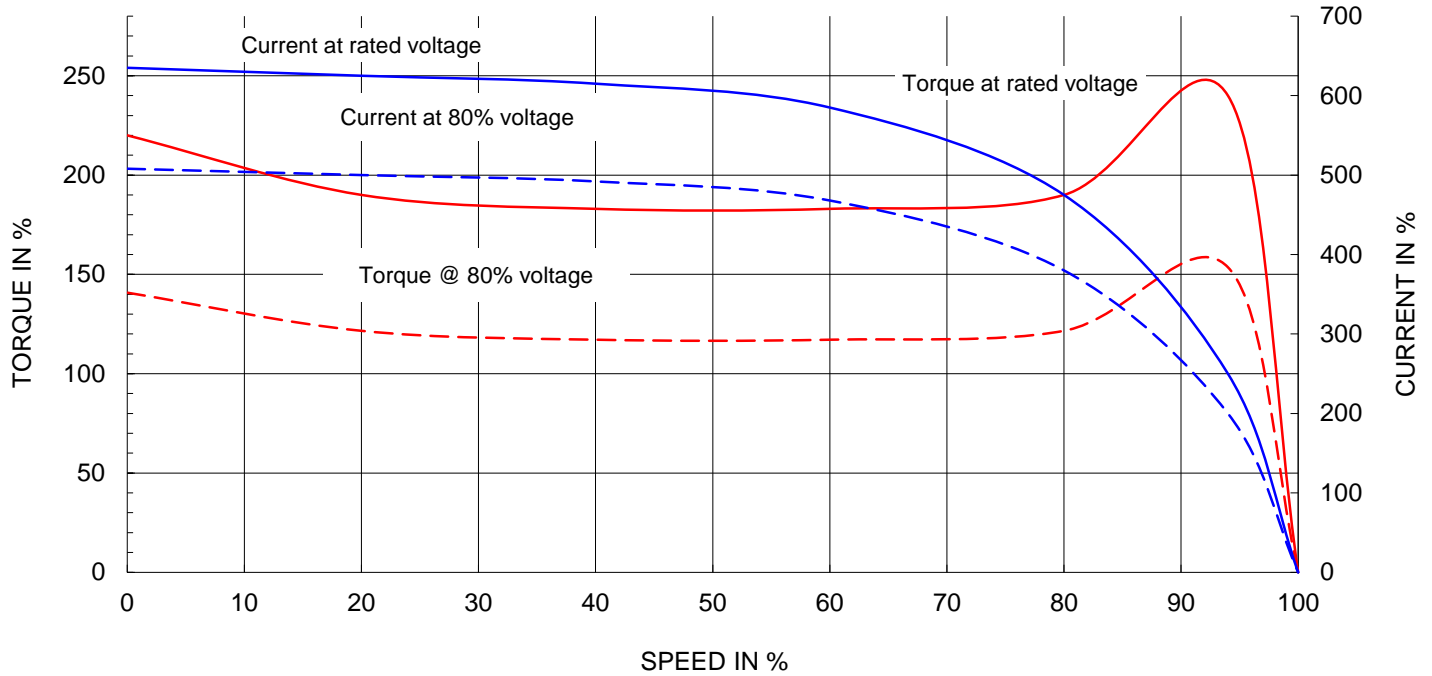
KEY		KEYSET	SHAFT		TERMINAL BOX				
S	ES	R	N-W	U	AA	XB	XC	XD	XE
0.75	5.65	2.45	7.25	2.875	3	4.57	11.73	9.76	12.48



Motor Performance Curves

Motor type:	EPIC				
Output rating (HP)	100	FL Speed:	1790		
Full Load Torque :	293 lb.ft	LRT (% FLT):	220	460 volt FLA:	114.3
Rotor Wk^2:	45.5 lb-ft^2	BDT (% FLT):	240	230 volt FLA:	228.6

SPEED VS TORQUE & CURRENT CURVE



OUTPUT VS EFF., P.F & CURRENT CURVE

