



# WORLDWIDE ELECTRIC MOTOR DATA SHEET



## PEWWE100-18-405T

HORSEPOWER	<b>100</b>		
RPM / POLES	<b>1800 / 4</b>		
VOLTAGE / PHASE	<b>230 / 460 V / 3</b>		
FRAME	<b>405T</b>		
ENCLOSURE / DEGREE OF PROTECTION	<b>TEFC / IP54</b>		
FREQUENCY	<b>60 HZ Suitable For 50 HZ Operation With 1.0 SF</b>		
FULL LOAD SPEED	<b>1790 RPM</b>		
SERVICE FACTOR	<b>1.15</b>		
INSULATION CLASS	<b>F</b>		
FULL LOAD AMPS; 230 / 460	<b>227 / 113 A Usable On 208 V At 251 A</b>		
LOCKED ROTOR AMPS (STARTING); 230 / 460	<b>1450 / 725 A</b>		
NO LOAD CURRENT	<b>71.0 / 35.5 A</b>		
NEMA CODE LETTER	<b>G</b>		
EFFICIENCY / POWER FACTOR	<u>LOAD</u>	<u>EFF.</u>	<u>P.F.</u>
	<b>100%</b>	<b>95.4%</b>	<b>0.87</b>
	<b>75%</b>	<b>95.4%</b>	<b>0.84</b>
	<b>50%</b>	<b>95.1%</b>	<b>0.77</b>
DUTY CYCLE	<b>CONTINUOUS</b>		
TORQUE	<u>FULL LOAD</u>	<u>LRT</u>	<u>BDT</u>
	<b>293 lb.ft.</b>	<b>170%</b>	<b>270%</b>
SLIP	<b>0.55%</b>		
NEMA DESIGN	<b>B</b>		
MOMENT OF INERTIA	<b>31 lb.ft.<sup>2</sup></b>		
SOUND PRESSURE LEVEL	<b>89 dB(A)</b>		
MAX. TIME LOCKED ROTOR (Hot)	<b>10 Seconds</b>		
MAX. AMBIENT TEMPERATURE	<b>40° C</b>		
MAX. ELEVATION	<b>3300 Ft. Above Sea Level</b>		
TEMPERATURE RISE (At Full Load)	<b>80° C</b>		
DE BEARING	<b>NU316C3</b>		
ODE BEARING	<b>6313C3</b>		
REGREASING INT. - DE BEARING	<b>2,200 Hours (1.22 oz.)</b>		
REGREASING INT. - ODE BEARING	<b>6,500 Hours (0.86 oz.)</b>		
GREASE TYPE	<b>Mobil Polyrex EM</b>		
MOUNTING	<b>F1</b>		
ROTATION	<b>Bi-Directional</b>		
C-FLANGE	---		
D-FLANGE	---		
SHAFT MATERIAL	<b>1045 Carbon Steel</b>		
CONNECTION DIAGRAM	<b>230 / 460 V - 12 Lead Δ</b>		
APPROXIMATE WEIGHT	<b>1213 lbs.</b>		
INVERTER RATING	<b>4:1 CT / 10:1 VT PWM Type</b>		



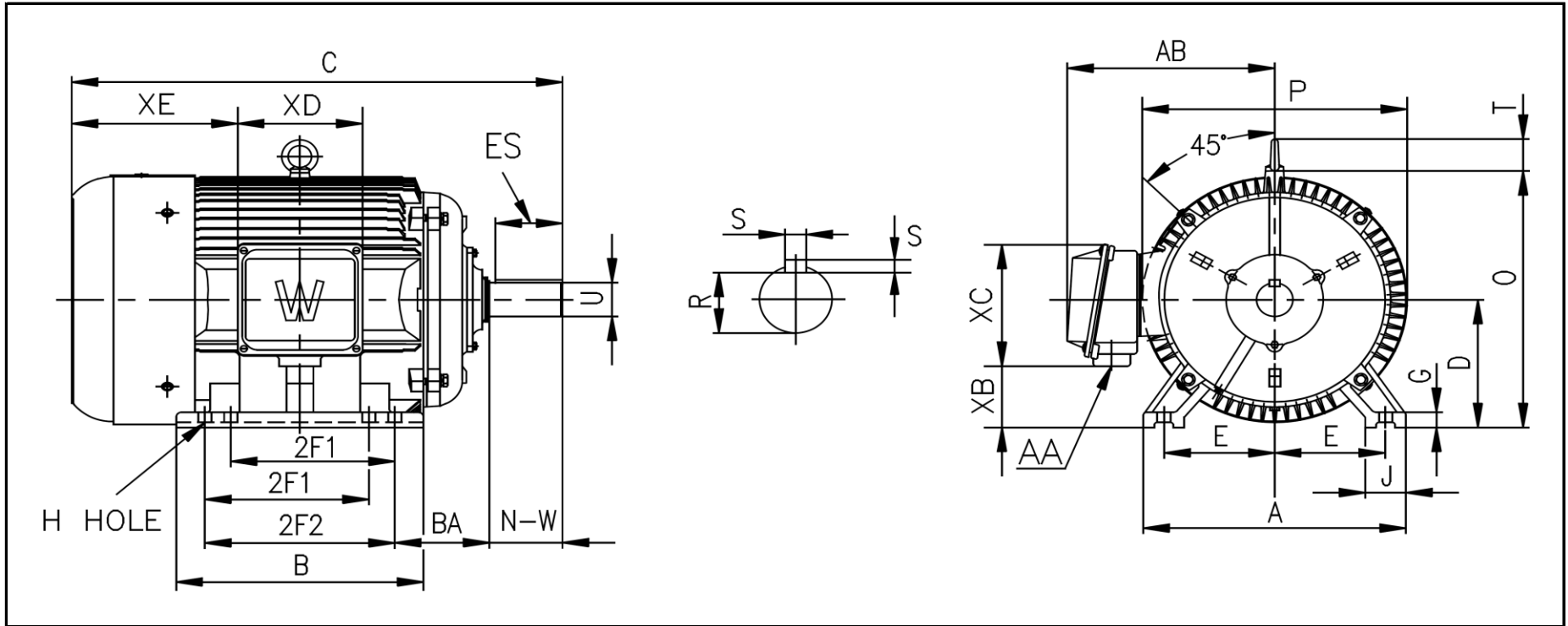
**CC006A**





# WORLDWIDE ELECTRIC MOTOR DRAWING

## PEWWE-405T



**DIMENSIONS - INCHES**

MOUNTING					A	B	C	D	G	J	P	O	T	AB
E	2F1	2F2	H	BA										
8	12.25	13.75	0.81	6.62	20	17.8	38.35	10	1.18	3.15	21.42	21.02	2.83	18.31

KEY		KEYSET	SHAFT		TERMINAL BOX				
S	ES	R	N-W	U	AA	XB	XC	XD	XE
0.75	5.65	2.45	7.25	2.875	3	4.57	11.73	9.76	12.48