



WORLDWIDE ELECTRIC MOTOR DATA SHEET



PEWWE100-36-405TS

HORSEPOWER	100		
RPM / POLES	3600 / 2		
VOLTAGE / PHASE	230 / 460 V / 3		
FRAME	405TS		
ENCLOSURE / DEGREE OF PROTECTION	TEFC / IP54		
FREQUENCY	60 HZ Suitable For 50 HZ Operation With 1.0 SF		
FULL LOAD SPEED	3575 RPM		
SERVICE FACTOR	1.15		
INSULATION CLASS	F		
FULL LOAD AMPS; 230 / 460	225 / 112 A Usable On 208 V At 249 A		
LOCKED ROTOR AMPS (STARTING); 230 / 460	1450 / 725 A		
NO LOAD CURRENT	52.8 / 26.4 A		
NEMA CODE LETTER	G		
EFFICIENCY / POWER FACTOR	<u>LOAD</u>	<u>EFF.</u>	<u>P.F.</u>
	100%	94.1%	0.89
	75%	94.1%	0.88
	50%	93.9%	0.84
DUTY CYCLE	CONTINUOUS		
TORQUE	<u>FULL LOAD</u>	<u>LRT</u>	<u>BDT</u>
	146.9 lb.ft.	140%	220%
SLIP	0.69%		
NEMA DESIGN	B		
MOMENT OF INERTIA	13.4 lb.ft. ²		
SOUND PRESSURE LEVEL	94 dB(A)		
MAX. TIME LOCKED ROTOR (Hot)	12 Seconds		
MAX. AMBIENT TEMPERATURE	40° C		
MAX. ELEVATION	3300 Ft. Above Sea Level		
TEMPERATURE RISE (At Full Load)	80° C		
DE BEARING	6313C3		
ODE BEARING	6313C3		
REGREASING INT. - DE BEARING	2,800 Hours (1.22 oz.)		
REGREASING INT. - ODE BEARING	2,800 Hours (0.86 oz.)		
GREASE TYPE	Mobil Polyrex EM		
MOUNTING	F1		
ROTATION	Bi-Directional		
C-FLANGE	PEW400TC-2		
D-FLANGE	PEW400TD-2		
SHAFT MATERIAL	1045 Carbon Steel		
CONNECTION DIAGRAM	230 / 460 V - 12 Lead Δ		
APPROXIMATE WEIGHT	1103 lbs.		
INVERTER RATING	4:1 CT / 10:1 VT PWM Type		



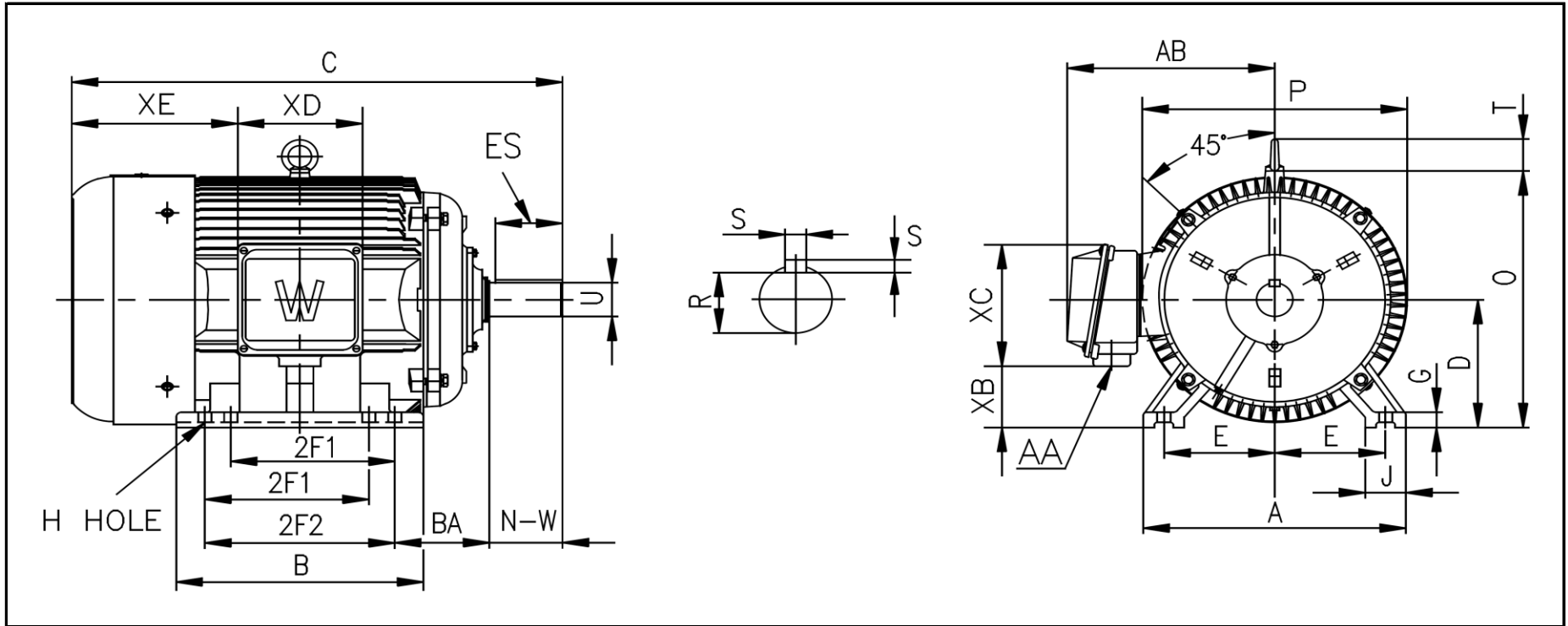
CC006A





WORLDWIDE ELECTRIC MOTOR DRAWING

PEWWE-405TS



DIMENSIONS - INCHES

MOUNTING					A	B	C	D	G	J	P	O	T	AB
E	2F1	2F2	H	BA										
8	12.25	13.75	0.81	6.62	20	17.8	35.35	10	1.18	3.15	21.42	21.02	2.83	18.31

KEY		KEYSET	SHAFT		TERMINAL BOX				
S	ES	R	N-W	U	AA	XB	XC	XD	XE
0.5	2.78	1.845	4.25	2.125	3	4.57	11.73	9.76	12.48