



WORLDWIDE ELECTRIC MOTOR DATA SHEET

PEWWE75-12-405T



HORSEPOWER	75		
RPM / POLES	1200 / 6		
VOLTAGE / PHASE	230 / 460 V / 3		
FRAME	405T		
ENCLOSURE / DEGREE OF PROTECTION	TEFC / IP55		
FREQUENCY	60 HZ Suitable For 50 HZ Operation With 1.0 SF		
FULL LOAD SPEED	1190 RPM		
SERVICE FACTOR	1.25		
INSULATION CLASS	F		
FULL LOAD AMPS; 230 / 460	175 / 87.4 A (Usable On 208V At 194 A)		
LOCKED ROTOR AMPS (STARTING); 230 / 460	1085 / 542.5 A		
NO LOAD CURRENT	62.6 / 31.3 A		
NEMA CODE LETTER	G		
EFFICIENCY / POWER FACTOR	<u>LOAD</u>	<u>EFF.</u>	<u>P.F.</u>
	100 %	94.5%	0.85
	75 %	94.8%	0.81
	50 %	94.5%	0.72
DUTY CYCLE	S1 / Continuous		
TORQUE	<u>FULL LOAD</u>	<u>LRT</u>	<u>BDT</u>
	331 lb.ft.	180%	250%
SLIP	0.83 %		
NEMA DESIGN	B		
MOMENT OF INERTIA	38.6 lb.ft. ²		
MAX. TIME LOCKED ROTOR (Hot)	12 Seconds		
SOUND PRESSURE LEVEL	74 dB (A)		
MAX. AMBIENT TEMPERATURE	40° C		
MAX. ELEVATION	3300 Ft.		
TEMPERATURE RISE (At Full Load)	80° C		
DE BEARING	NU316 C3		
ODE BEARING	6313 C3		
REGREASING INT. - DE BEARING	3000 Hours		
REGREASING INT. - ODE BEARING	4500 Hours		
GREASE TYPE	SKF LGHP 2		
MOUNTING	F1 (F2 Suitable)		
ROTATION	Bi-Directional		
SHAFT MATERIAL	1045 Carbon Steel		
INVERTER RATING	10:1 CT / 20:1 VT PWM Type		
CONNECTION DIAGRAM	230 / 460 V - 12 Lead Δ		
AREA CLASSIFICATION	Class I, Division 2, Groups A, B, C, D		
APPROXIMATE WEIGHT	1129 lbs.		



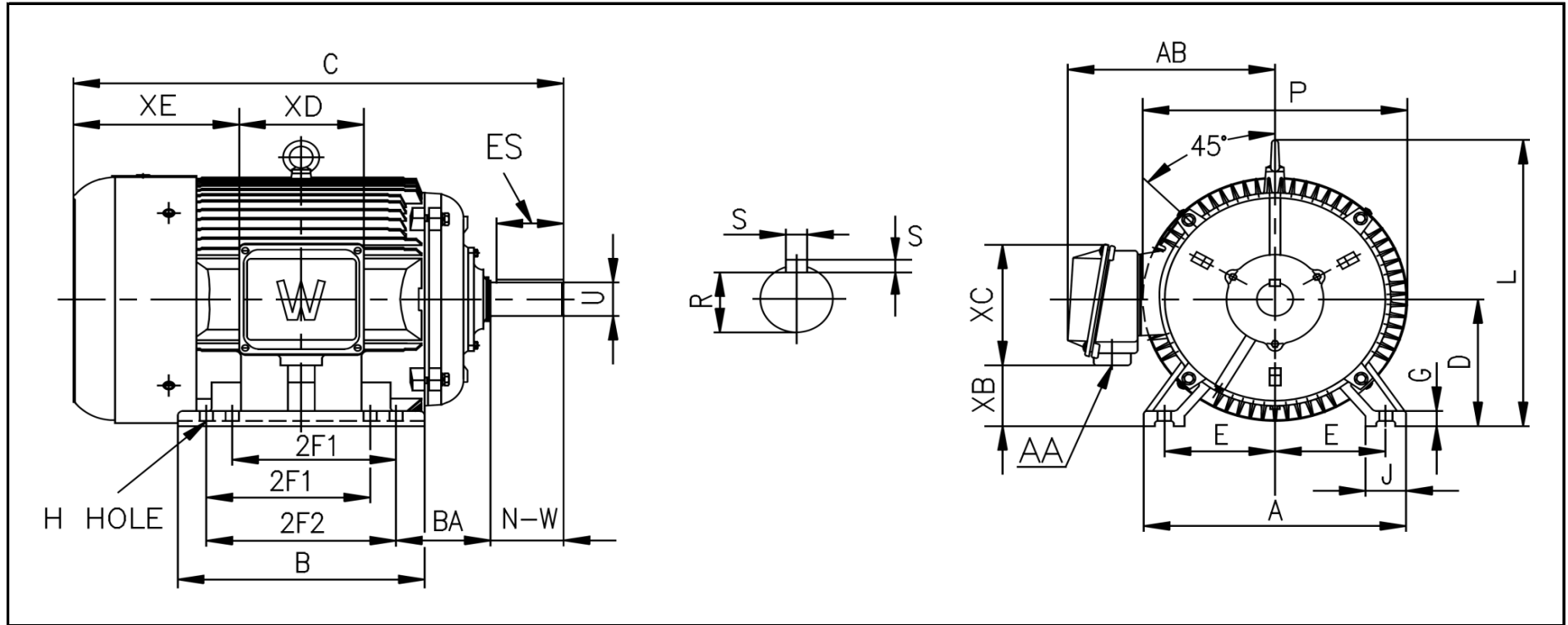
CC006A





WORLDWIDE ELECTRIC MOTOR DRAWING

PEWWE-405T



DIMENSIONS - INCHES

MOUNTING					A	B	C	D	G	J	P	L	AB
E	2F1	2F2	H	BA									
8	12.25	13.75	0.81	6.62	20	17	38.1	10	1.18	3.2	21.6	21.1	19

KEY		KEYSET	SHAFT		TERMINAL BOX				
S	ES	R	N-W	U	AA	XB	XC	XD	XE
0.75	5.65	2.45	7.25	2.875	3	4.6	12	9.8	13.5