



WORLDWIDE ELECTRIC MOTOR DATA SHEET



PEWWE60-12-404T

HORSEPOWER	60		
RPM / POLES	1200 / 6		
VOLTAGE / PHASE	230 / 460 V / 3		
FRAME	404T		
ENCLOSURE / DEGREE OF PROTECTION	TEFC / IP54		
FREQUENCY	60 HZ Suitable For 50 HZ Operation With 1.0 SF		
FULL LOAD SPEED	1190 RPM		
SERVICE FACTOR	1.15		
INSULATION CLASS	F		
FULL LOAD AMPS; 230 / 460	140 / 70.3 A Usable On 208 V At 155 A		
LOCKED ROTOR AMPS (STARTING); 230 / 460	870 / 435 A		
NO LOAD CURRENT	46.2 / 23.1 A		
NEMA CODE LETTER	G		
EFFICIENCY / POWER FACTOR	<u>LOAD</u>	<u>EFF.</u>	<u>P.F.</u>
	100%	94.5%	0.85
	75%	94.6%	0.82
	50%	94.3%	0.75
DUTY CYCLE	CONTINUOUS		
TORQUE	<u>FULL LOAD</u>	<u>LRT</u>	<u>BDT</u>
	264.7 lb.ft.	160%	240%
	0.83%		
SLIP	0.83%		
NEMA DESIGN	B		
MOMENT OF INERTIA	35.1 lb.ft. ²		
SOUND PRESSURE LEVEL	85 dB(A)		
MAX. TIME LOCKED ROTOR (Hot)	17 Seconds		
MAX. AMBIENT TEMPERATURE	40° C		
MAX. ELEVATION	3300 Ft. Above Sea Level		
TEMPERATURE RISE (At Full Load)	80° C		
DE BEARING	NU316C3		
ODE BEARING	6313C3		
REGREASING INT. - DE BEARING	3,000 Hours (1.22 oz.)		
REGREASING INT. - ODE BEARING	11,000 Hours (0.86 oz.)		
GREASE TYPE	Mobil Polyrex EM		
MOUNTING	F1 (F2 Suitable)		
ROTATION	Bi-Directional		
C-FLANGE	---		
D-FLANGE	---		
SHAFT MATERIAL	1045 Carbon Steel		
CONNECTION DIAGRAM	230 / 460 V - 12 Lead Δ		
APPROXIMATE WEIGHT	1069 lbs.		
INVERTER RATING	4:1 CT / 10:1 VT PWM Type		



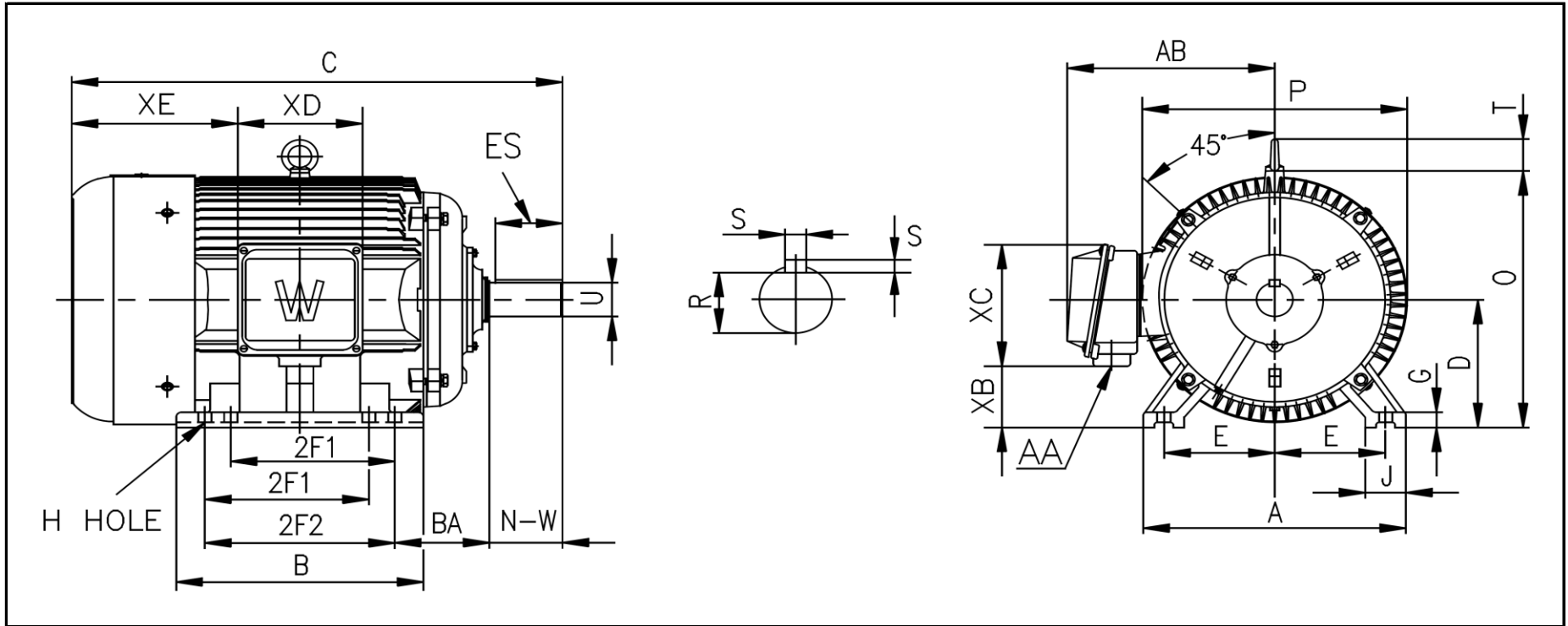
CC006A





WORLDWIDE ELECTRIC MOTOR DRAWING

PEWWE-404T



DIMENSIONS - INCHES

MOUNTING					A	B	C	D	G	J	P	O	T	AB
E	2F1	2F2	H	BA										
8	12.25	---	0.81	6.62	20	16.2	36.81	10	1.18	3.15	21.42	21.02	2.83	18.31

KEY		KEYSET	SHAFT		TERMINAL BOX				
S	ES	R	N-W	U	AA	XB	XC	XD	XE
0.75	5.65	2.45	7.25	2.875	3	4.57	11.73	9.76	11.69