



# WORLDWIDE ELECTRIC MOTOR DATA SHEET



## PEWWE60-36-364TS

|   |  |             |             |
|---|--|-------------|-------------|
| HORSEPOWER                              | 60   |             |             |
| RPM / POLES                             | 3600 / 2                                       |             |             |
| VOLTAGE / PHASE                         | 230 / 460 V / 3                                |             |             |
| FRAME                                   | 364TS  |             |             |
| ENCLOSURE / DEGREE OF PROTECTION        | TEFC / IP54                                    |             |             |
| FREQUENCY                               | 60 HZ Suitable For 50 HZ Operation With 1.0 SF |             |             |
| FULL LOAD SPEED                         | 3570 RPM                                       |             |             |
| SERVICE FACTOR                          | 1.15   |             |             |
| INSULATION CLASS                        | F  |             |             |
| FULL LOAD AMPS; 230 / 460               | 137 / 68.6 A Usable On 208 V At 151 A          |             |             |
| LOCKED ROTOR AMPS (STARTING); 230 / 460 | 870 / 435 A                                    |             |             |
| NO LOAD CURRENT                         | 38.4 / 19.2 A                                  |             |             |
| NEMA CODE LETTER                        | G  |             |             |
| EFFICIENCY / POWER FACTOR               | <u>LOAD</u>                                    | <u>EFF.</u> | <u>P.F.</u> |
|   | 100%   | 93.6%       | 0.88        |
|   | 75%  | 93.7%       | 0.86        |
|   | 50%  | 93.2%       | 0.80        |
| DUTY CYCLE                              | CONTINUOUS                                     |             |             |
| TORQUE                                  | <u>FULL LOAD</u>                               | <u>LRT</u>  | <u>BDT</u>  |
|   | 88.2 lb.ft.                                    | 170%        | 230%        |
| SLIP                                    | 0.83%  |             |             |
| NEMA DESIGN                             | B  |             |             |
| MOMENT OF INERTIA                       | 6.44 lb.ft. <sup>2</sup>                       |             |             |
| SOUND PRESSURE LEVEL                    | 91 dB(A)                                       |             |             |
| MAX. TIME LOCKED ROTOR (Hot)            | 16 Seconds                                     |             |             |
| MAX. AMBIENT TEMPERATURE                | 40° C  |             |             |
| MAX. ELEVATION                          | 3300 Ft. Above Sea Level                       |             |             |
| TEMPERATURE RISE (At Full Load)         | 80° C  |             |             |
| DE BEARING                              | 6313C3   |             |             |
| ODE BEARING                             | 6312C3   |             |             |
| REGREASING INT. - DE BEARING            | 2,800 Hours (0.86 oz.)                         |             |             |
| REGREASING INT. - ODE BEARING           | 3,200 Hours (0.75 oz.)                         |             |             |
| GREASE TYPE                             | Mobil Polyrex EM                               |             |             |
| MOUNTING                                | F1 (F2 Suitable)                               |             |             |
| ROTATION                                | Bi-Directional                                 |             |             |
| C-FLANGE                                | PEW360TC                                       |             |             |
| D-FLANGE                                | PEW360TD                                       |             |             |
| SHAFT MATERIAL                          | 1045 Carbon Steel                              |             |             |
| CONNECTION DIAGRAM                      | 230 / 460 V - 12 Lead Δ                        |             |             |
| APPROXIMATE WEIGHT                      | 728 lbs.                                       |             |             |
| INVERTER RATING                         | 4:1 CT / 10:1 VT PWM Type                      |             |             |



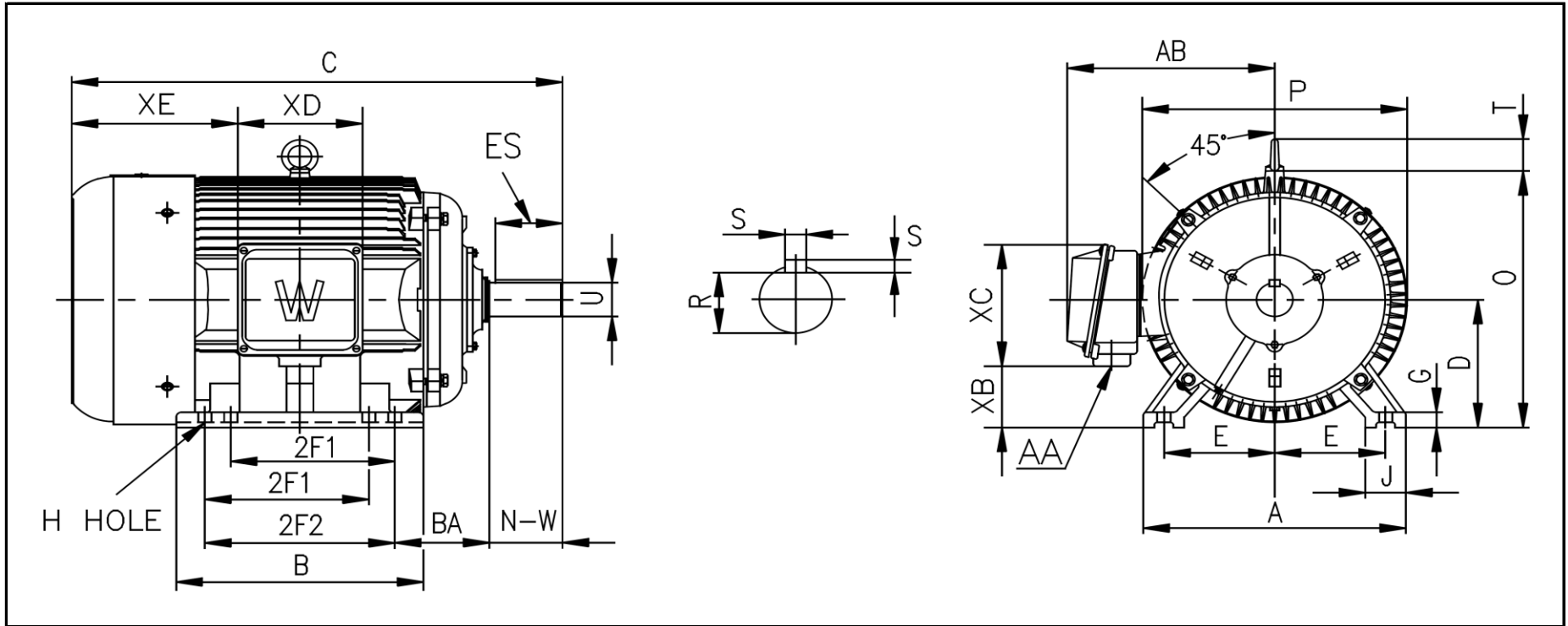
CC006A





# WORLDWIDE ELECTRIC MOTOR DRAWING

## PEWWE-364TS



**DIMENSIONS - INCHES**

| MOUNTING |       |     |      |      | A  | B     | C     | D | G     | J    | P    | O     | T     | AB   |
|----------|-------|-----|------|------|----|-------|-------|---|-------|------|------|-------|-------|------|
| E        | 2F1   | 2F2 | H    | BA   |    |       |       |   |       |      |      |       |       |      |
| 7        | 11.25 | --- | 0.66 | 5.88 | 18 | 16.78 | 32.92 | 9 | 1.102 | 2.95 | 17.7 | 18.13 | 2.835 | 15.7 |

| KEY |      | KEYSET | SHAFT |       | TERMINAL BOX |      |       |      |    |
|-----|------|--------|-------|-------|--------------|------|-------|------|----|
| S   | ES   | R      | N-W   | U     | AA           | XB   | XC    | XD   | XE |
| 0.5 | 2.03 | 1.591  | 3.75  | 1.875 | 3            | 3.74 | 10.55 | 8.98 | 12 |