



# WORLDWIDE ELECTRIC MOTOR DATA SHEET



## PEWWE40-12-364T

HORSEPOWER	40		
RPM / POLES	1200 / 6		
VOLTAGE / PHASE	230 / 460 V / 3		
FRAME	364T		
ENCLOSURE / DEGREE OF PROTECTION	TEFC / IP54		
FREQUENCY	60 HZ Suitable For 50 HZ Operation With 1.0 SF		
FULL LOAD SPEED	1190 RPM		
SERVICE FACTOR	1.15		
INSULATION CLASS	F		
FULL LOAD AMPS; 230 / 460	101 / 50.7 A Usable On 208 V At 112 A		
LOCKED ROTOR AMPS (STARTING); 230 / 460	580 / 290 A		
NO LOAD CURRENT	46.6 / 23.3 A		
NEMA CODE LETTER	G		
EFFICIENCY / POWER FACTOR	<u>LOAD</u>	<u>EFF.</u>	<u>P.F.</u>
	100%	94.1%	0.79
	75%	94.1%	0.75
	50%	93.5%	0.66
DUTY CYCLE	CONTINUOUS		
TORQUE	<u>FULL LOAD</u>	<u>LRT</u>	<u>BDT</u>
	176.0 lb.ft.	140%	230%
SLIP	0.83%		
NEMA DESIGN	B		
MOMENT OF INERTIA	17.1 lb.ft. <sup>2</sup>		
SOUND PRESSURE LEVEL	82 dB(A)		
MAX. TIME LOCKED ROTOR (Hot)	30 Seconds		
MAX. AMBIENT TEMPERATURE	40° C		
MAX. ELEVATION	3300 Ft. Above Sea Level		
TEMPERATURE RISE (At Full Load)	80° C		
DE BEARING	6313C3		
ODE BEARING	6312C3		
REGREASING INT. - DE BEARING	12,200 Hours (0.86 oz.)		
REGREASING INT. - ODE BEARING	12,400 Hours (0.75 oz.)		
GREASE TYPE	Mobil Polyrex EM		
MOUNTING	F1		
ROTATION	Bi-Directional		
C-FLANGE	PEW360TC		
D-FLANGE	PEW360TD		
SHAFT MATERIAL	1045 Carbon Steel		
CONNECTION DIAGRAM	230 / 460 V - 12 Lead Δ		
APPROXIMATE WEIGHT	816 lbs.		
INVERTER RATING	4:1 CT / 10:1 VT PWM Type		



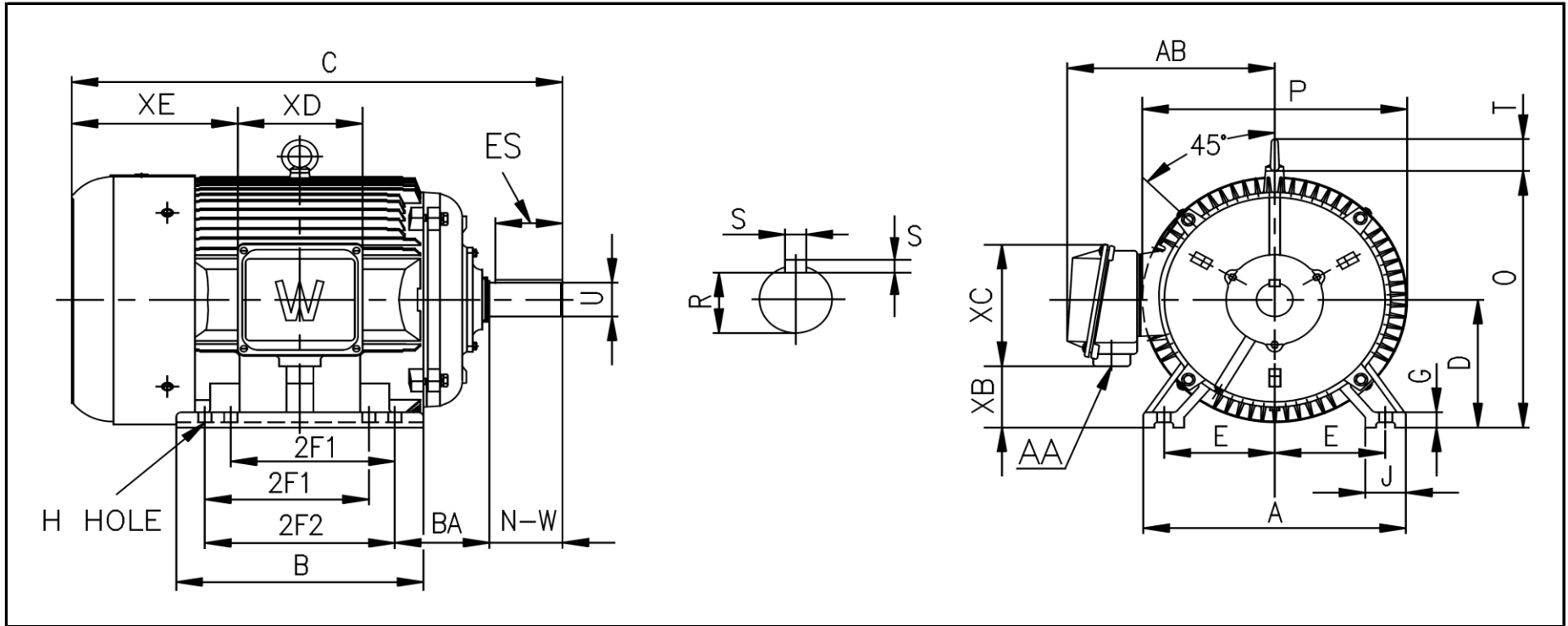
CC006A





# WORLDWIDE ELECTRIC MOTOR DRAWING

## PEWWE-364T



**DIMENSIONS - INCHES**

MOUNTING					A	B	C	D	G	J	P	O	T	AB
E	2F1	2F2	H	BA										
7	11.25	---	0.66	5.88	18	16.78	35.04	9	1.102	2.95	17.7	18.13	2.835	15.7

KEY		KEYSET	SHAFT		TERMINAL BOX				
S	ES	R	N-W	U	AA	XB	XC	XD	XE
0.625	4.28	2.021	5.88	2.375	3	3.74	10.55	8.98	12