



WORLDWIDE ELECTRIC MOTOR DATA SHEET

PEWWE40-18-324T



HORSEPOWER	40		
RPM / POLES	1800 / 4		
VOLTAGE / PHASE	230 / 460 V / 3		
FRAME	324T		
ENCLOSURE / DEGREE OF PROTECTION	TEFC / IP54		
FREQUENCY	60 HZ Suitable For 50 HZ Operation With 1.0 SF		
FULL LOAD SPEED	1780 RPM		
SERVICE FACTOR	1.15		
INSULATION CLASS	F		
FULL LOAD AMPS; 230 / 460	93.1 / 46.5 A Usable On 208 V At 103 A		
LOCKED ROTOR AMPS (STARTING); 230 / 460	698 / 349 A		
NO LOAD CURRENT	36.2 / 18.1 A		
NEMA CODE LETTER	H		
EFFICIENCY / POWER FACTOR	<u>LOAD</u>	<u>EFF.</u>	<u>P.F.</u>
	100%	94.1%	0.86
	75%	94.3%	0.81
	50%	94.0%	0.71
DUTY CYCLE	CONTINUOUS		
TORQUE	<u>FULL LOAD</u>	<u>LRT</u>	<u>BDT</u>
	118 lb.ft.	190%	280%
SLIP	1.10%		
NEMA DESIGN	A		
MOMENT OF INERTIA	7.13 lb.ft. ²		
SOUND PRESSURE LEVEL	85 dB(A)		
MAX. TIME LOCKED ROTOR (Hot)	13 Seconds		
MAX. AMBIENT TEMPERATURE	40° C		
MAX. ELEVATION	3300 Ft. Above Sea Level		
TEMPERATURE RISE (At Full Load)	80° C		
DE BEARING	6312C3		
ODE BEARING	6311C3		
REGREASING INT. - DE BEARING	7,000 Hours (0.75 oz.)		
REGREASING INT. - ODE BEARING	7,500 Hours (0.64 oz.)		
GREASE TYPE	Mobil Polyrex EM		
MOUNTING	F1		
ROTATION	Bi-Directional		
C-FLANGE	PEW320TC		
D-FLANGE	PEW320TD		
SHAFT MATERIAL	1045 Carbon Steel		
CONNECTION DIAGRAM	230 / 460 V - 12 Lead Δ		
APPROXIMATE WEIGHT	617 lbs.		
INVERTER RATING	4:1 CT / 10:1 VT PWM Type		

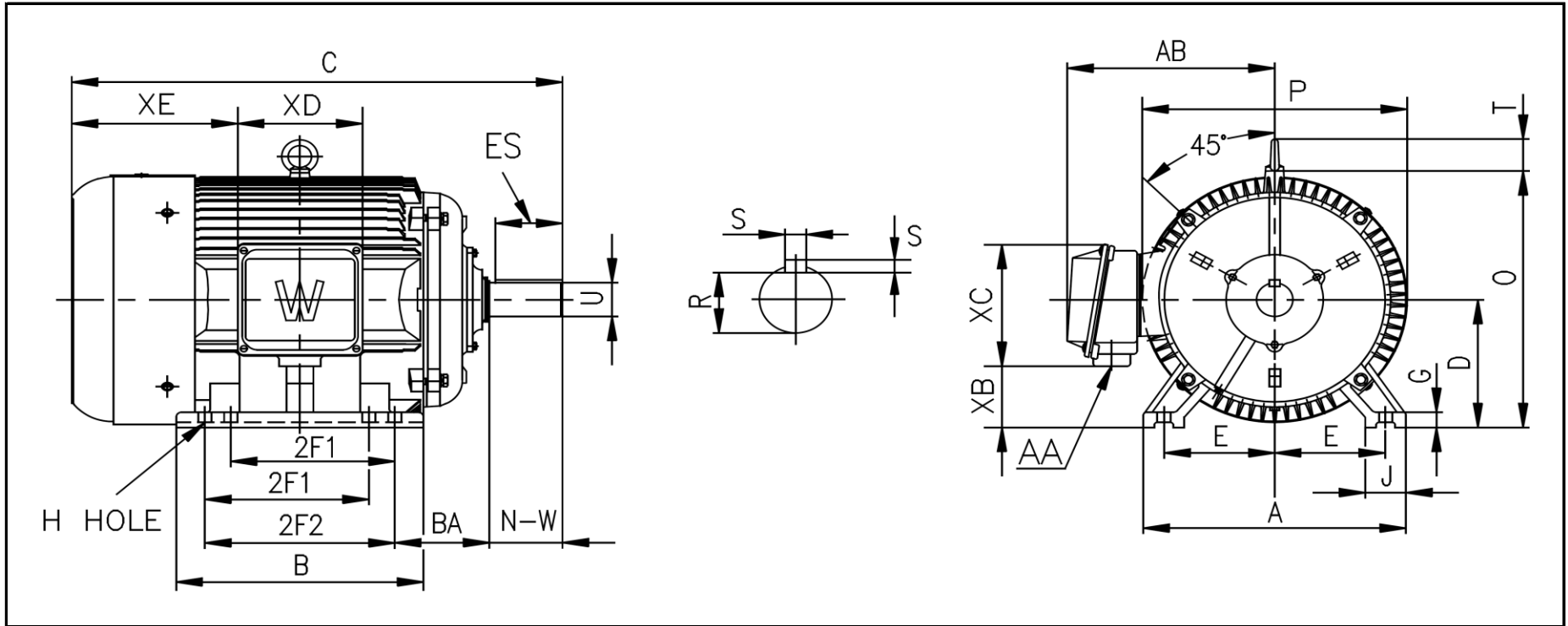


CC006A



WORLDWIDE ELECTRIC MOTOR DRAWING

PEWWE-324T



DIMENSIONS - INCHES

MOUNTING					A	B	C	D	G	J	P	O	T	AB
E	2F1	2F2	H	BA										
6.25	10.5	12	0.66	5.25	16	15.5	30.63	8	0.984	2.76	15.75	15.91	2.44	13.4

KEY		KEYSET	SHAFT		TERMINAL BOX				
S	ES	R	N-W	U	AA	XB	XC	XD	XE
0.5	3.91	1.845	5.25	2.125	2	2.64	10.55	8.98	9.65