



WORLDWIDE ELECTRIC MOTOR DATA SHEET

EP30-36-286TS



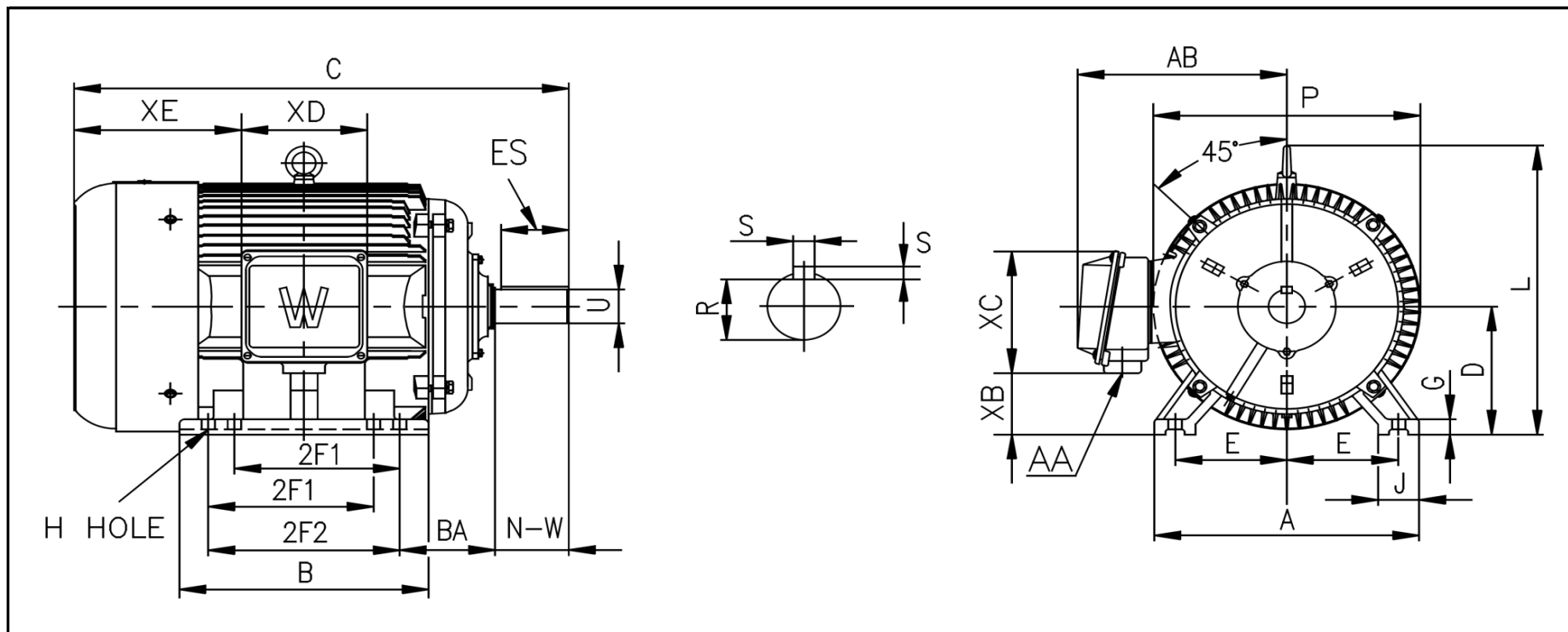
HORSEPOWER	30
RPM / POLES	3600 / 2
VOLTAGE / PHASE	230 / 460 V / 3
FRAME	286TS
ENCLOSURE / DEGREE OF PROTECTION	TEFC / IP55
FREQUENCY	60 HZ Suitable For 50 HZ Operation With 1.0 SF
FULL LOAD SPEED	3560 RPM
SERVICE FACTOR	1.25 SF at 40° C / 1.0 SF at 55° C
INSULATION CLASS	F
FULL LOAD AMPS; 230 / 460	70.42 / 35.21 A
LOCKED ROTOR AMPS (STARTING); 230 / 460	435 / 217.5 A
NO LOAD CURRENT	26.8 / 13.4 A
NEMA CODE LETTER	K
EFFICIENCY / POWER FACTOR	<u>LOAD</u> <u>EFF.</u> <u>P.F.</u>
	100% 91.9% 0.87
	75% 91.7% 0.87
	50% 88.6% 0.85
DUTY CYCLE	S1 / Continuous
TORQUE	<u>FULL LOAD</u> <u>LRT</u> <u>BDT</u>
	44.3 lb.ft. 200% 260%
SLIP	1.10%
NEMA DESIGN	G
MOMENT OF INERTIA	3.98 lb.ft. ²
NUMBER OF STARTS (Hot / Cold)	2 Hot / 3 Cold
MAX. AMBIENT TEMPERATURE	40° C at 1.25 SF / 55° C at 1.0 SF
MAX. ELEVATION	3300 Ft. Above Sea Level
TEMPERATURE RISE (At Full Load)	80° C
DE BEARING	6311
ODE BEARING	6309
GREASE TYPE	Mobil Polyrex EM
MOUNTING	F1 (F2 Suitable)
ROTATION	Bi-Directional
APPROXIMATE WEIGHT	384 lbs.
AREA CLASSIFICATION	Class I, Division 2, Groups A, B, C, D
TEMPERATURE CODE AT 40°C AMBIENT	T3C
TEMPERATURE CODE AT 55°C AMBIENT	T3A
INVERTER RATING	10:1 CT / 20:1 VT PWM Type
SPECIFICATION - In Accordance With	NEMA, CSA



CC067A



JUNE 23, 2016



MOUNTING					A	B	C	D	G	J	P	L	AB
E	2F1	2F2	H	BA									
5.5	9.5	11	0.53	4.75	13.74	13.7	26.98	7	0.98	2.68	15.92	17	13.5

REVISÉD - 06/29/17