



# WORLDWIDE ELECTRIC MOTOR DATA SHEET



## PEWWE25-18-284T

HORSEPOWER	25		
RPM / POLES	1800 / 4		
VOLTAGE / PHASE	230 / 460 V / 3		
FRAME	284T		
ENCLOSURE / DEGREE OF PROTECTION	TEFC / IP54		
FREQUENCY	60 HZ Suitable For 50 HZ Operation With 1.0 SF		
FULL LOAD SPEED	1775 RPM		
SERVICE FACTOR	1.15		
INSULATION CLASS	F		
FULL LOAD AMPS; 230 / 460	58.4 / 29.2 A Usable On 208 V At 64.6 A		
LOCKED ROTOR AMPS (STARTING); 230 / 460	365 / 182.5 A		
NO LOAD CURRENT	23.2 / 11.6 A		
NEMA CODE LETTER	G		
EFFICIENCY / POWER FACTOR	<u>LOAD</u>	<u>EFF.</u>	<u>P.F.</u>
	100%	93.6%	0.85
	75%	93.8%	0.82
	50%	93.5%	0.73
DUTY CYCLE	CONTINUOUS		
TORQUE	<u>FULL LOAD</u>	<u>LRT</u>	<u>BDT</u>
	73.9 lb.ft.	160%	250%
SLIP	1.38%		
NEMA DESIGN	B		
MOMENT OF INERTIA	3.5 lb.ft. <sup>2</sup>		
SOUND PRESSURE LEVEL	85 dB(A)		
MAX. TIME LOCKED ROTOR (Hot)	19 Seconds		
MAX. AMBIENT TEMPERATURE	40° C		
MAX. ELEVATION	3300 Ft. Above Sea Level		
TEMPERATURE RISE (At Full Load)	80° C		
DE BEARING	6311C3		
ODE BEARING	6309C3		
REGREASING INT. - DE BEARING	7,500 Hours (0.64 oz.)		
REGREASING INT. - ODE BEARING	9,000 Hours (0.46 oz.)		
GREASE TYPE	Mobil Polyrex EM		
MOUNTING	F1		
ROTATION	Bi-Directional		
C-FLANGE	PEW280TC		
D-FLANGE	PEW280TD		
SHAFT MATERIAL	1045 Carbon Steel		
CONNECTION DIAGRAM	230 / 460 V - 12 Lead Δ		
APPROXIMATE WEIGHT	410 lbs.		
INVERTER RATING	4:1 CT / 10:1 VT PWM Type		



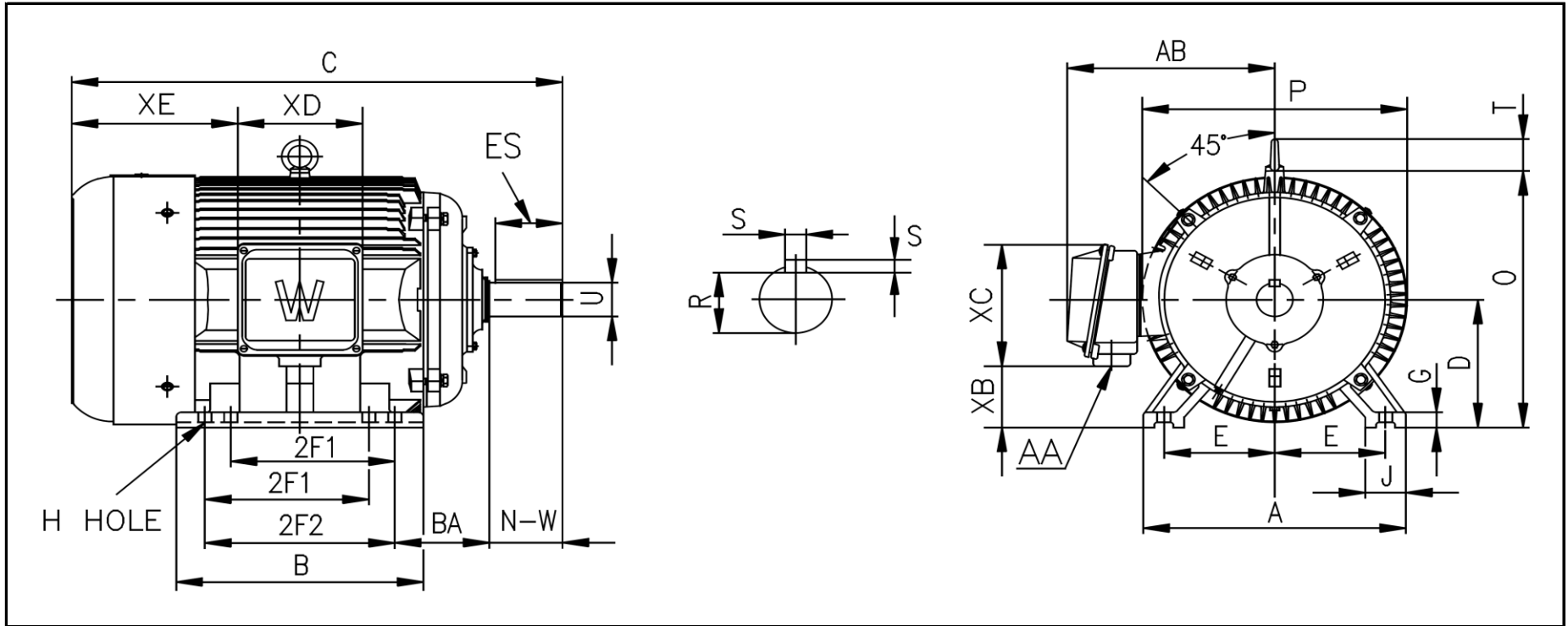
CC006A





# WORLDWIDE ELECTRIC MOTOR DRAWING

## PEWWE-284T



**DIMENSIONS - INCHES**

MOUNTING					A	B	C	D	G	J	P	O	T	AB
E	2F1	2F2	H	BA										
5.5	9.5	---	0.53	4.75	14	12.5	28	7	0.866	2.76	14.17	14.28	2.05	12

KEY		KEYSET	SHAFT		TERMINAL BOX				
S	ES	R	N-W	U	AA	XB	XC	XD	XE
0.5	3.28	1.591	4.62	1.875	1.5	3.58	7.2	6.3	10.5