



WORLDWIDE ELECTRIC MOTOR DATA SHEET



EP25-18-284T

| | | | |
|---|--|-------------|-------------|
| HORSEPOWER | 25 | | |
| RPM / POLES | 1800 / 4 | | |
| VOLTAGE / PHASE | 230 / 460 V / 3 | | |
| FRAME | 284T | | |
| ENCLOSURE / DEGREE OF PROTECTION | TEFC / IP55 | | |
| FREQUENCY | 60 HZ Suitable For 50 HZ Operation With 1.0 SF | | |
| FULL LOAD SPEED | 1770 RPM | | |
| SERVICE FACTOR | 1.25 SF at 40° C / 1.0 SF at 55° C | | |
| INSULATION CLASS | F | | |
| FULL LOAD AMPS; 230 / 460 | 59.6 / 29.8 A | | |
| LOCKED ROTOR AMPS (STARTING); 230 / 460 | 365 / 182.5 A | | |
| NO LOAD CURRENT | 18.4 / 9.2 A | | |
| NEMA CODE LETTER | G | | |
| EFFICIENCY / POWER FACTOR | <u>LOAD</u> | <u>EFF.</u> | <u>P.F.</u> |
| | 100% | 93.6% | 0.86 |
| | 75% | 93.6% | 0.84 |
| | 50% | 90.9% | 0.81 |
| DUTY CYCLE | S1 / Continuous | | |
| TORQUE | <u>FULL LOAD</u> | <u>LRT</u> | <u>BDT</u> |
| | 75.0 lb.ft. | 205% | 240% |
| | | | |
| SLIP | 1.67% | | |
| NEMA DESIGN | B | | |
| MOMENT OF INERTIA | 7.01 lb.ft. ² | | |
| NUMBER OF STARTS (Hot / Cold) | 2 Hot / 3 Cold | | |
| MAX. AMBIENT TEMPERATURE | 40° C at 1.25 SF / 55° C at 1.0 SF | | |
| MAX. ELEVATION | 3300 Ft. Above Sea Level | | |
| TEMPERATURE RISE (At Full Load) | 80° C | | |
| DE BEARING | 6311 | | |
| ODE BEARING | 6309 | | |
| GREASE TYPE | Mobil Polyrex EM | | |
| MOUNTING | F1 (F2 Suitable) | | |
| ROTATION | Bi-Directional | | |
| APPROXIMATE WEIGHT | 406 lbs. | | |
| AREA CLASSIFICATION | Class I, Division 2, Groups A, B, C, D | | |
| TEMPERATURE CODE AT 40°C AMBIENT | T3C | | |
| TEMPERATURE CODE AT 55°C AMBIENT | T3A | | |
| INVERTER RATING | 10:1 CT / 20:1 VT PWM Type | | |
| SPECIFICATION - In Accordance With | NEMA, CSA | | |



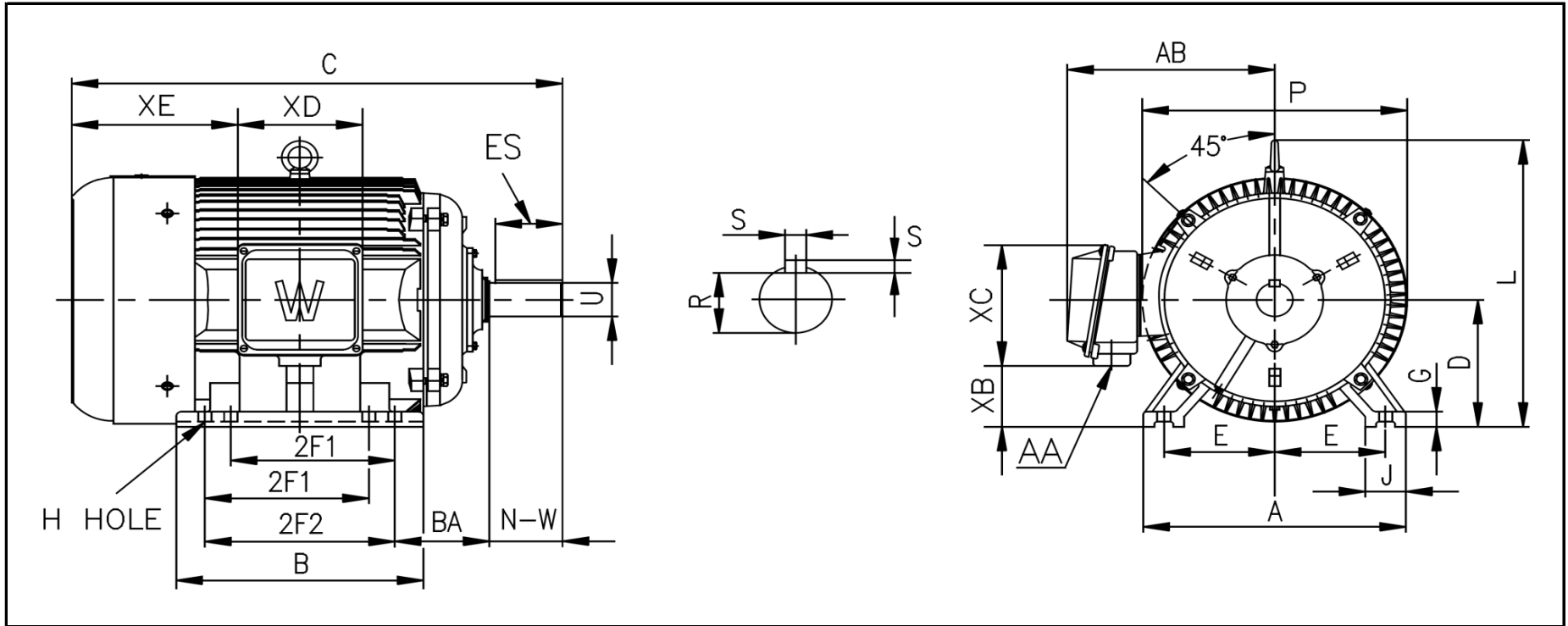
CC067A





WORLDWIDE ELECTRIC MOTOR DRAWING

EP-284T



DIMENSIONS - INCHES

| MOUNTING | | | | | A | B | C | D | G | J | P | L | AB |
|----------|-----|-----|------|------|------|------|----|---|---|-----|------|------|------|
| E | 2F1 | 2F2 | H | BA | | | | | | | | | |
| 5.5 | 9.5 | --- | 0.53 | 4.75 | 13.7 | 11.9 | 27 | 7 | 1 | 2.7 | 15.6 | 14.8 | 11.7 |

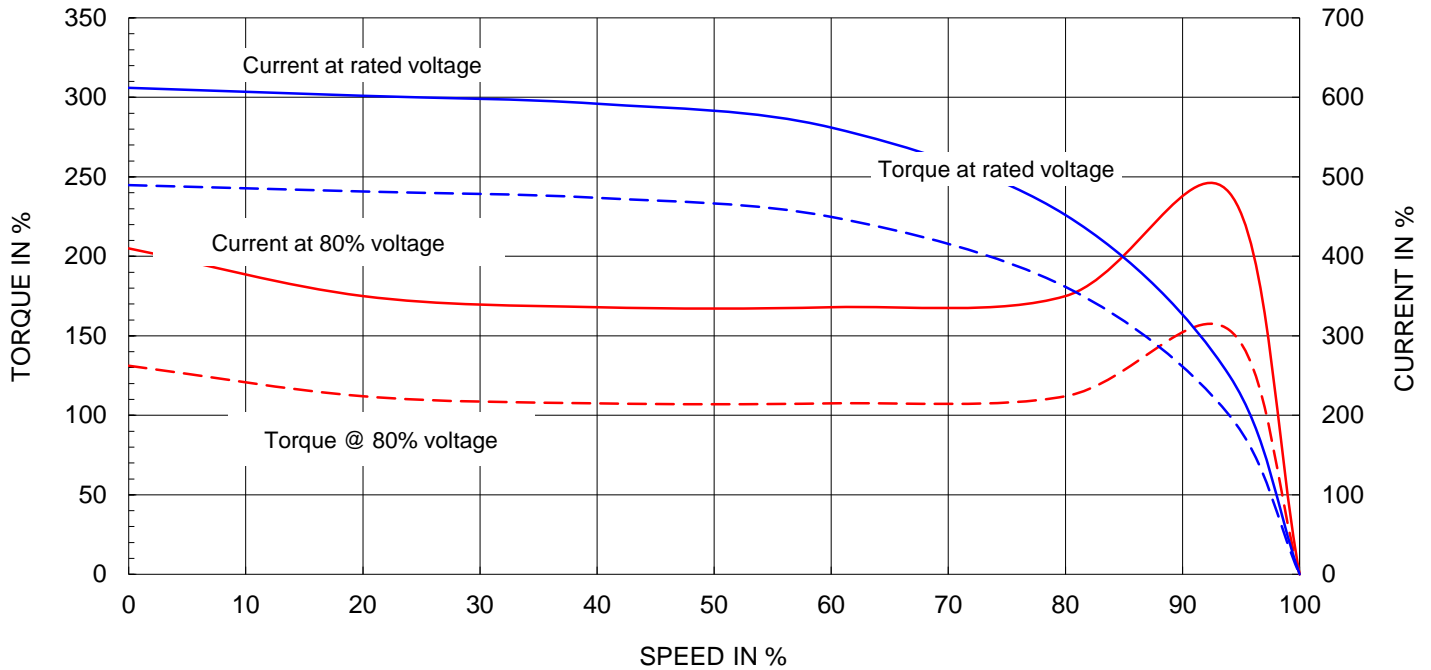
| KEY | | KEYSET | SHAFT | | TERMINAL BOX | | | | |
|-----|------|--------|-------|-------|--------------|------|-----|-----|-----|
| S | ES | R | N-W | U | AA | XB | XC | XD | XE |
| 0.5 | 3.28 | 1.591 | 4.62 | 1.875 | 1.5 | 3.84 | 7.3 | 6.3 | 9.7 |



Motor Performance Curves

| | | | | | |
|--------------------|-----------|--------------|------|---------------|------|
| Motor type: | EPIC | | | | |
| Output rating (HP) | 25 | FL Speed: | 1770 | | |
| Full Load Torque : | 75 lb.ft | LRT (% FLT): | 205 | 460 volt FLA: | 29.8 |
| Rotor Wk^2: | 7 lb-ft^2 | BDT (% FLT): | 240 | 230 volt FLA: | 59.6 |

SPEED VS TORQUE & CURRENT CURVE



OUTPUT VS EFF., P.F & CURRENT CURVE

