



WORLDWIDE ELECTRIC MOTOR DATA SHEET

PEWWE20-36-256T



| | | | |
|---|--|-------------|-------------|
| HORSEPOWER | 20 | | |
| RPM / POLES | 3600 / 2 | | |
| VOLTAGE / PHASE | 230 / 460 V / 3 | | |
| FRAME | 256T | | |
| ENCLOSURE / DEGREE OF PROTECTION | TEFC / IP54 | | |
| FREQUENCY | 60 HZ Suitable For 50 HZ Operation With 1.0 SF | | |
| FULL LOAD SPEED | 3545 RPM | | |
| SERVICE FACTOR | 1.15 | | |
| INSULATION CLASS | F | | |
| FULL LOAD AMPS; 230 / 460 | 46.5 / 23.2 A Usable On 208 V At 51.4 A | | |
| LOCKED ROTOR AMPS (STARTING); 230 / 460 | 290 / 145 A | | |
| NO LOAD CURRENT | 11.0 / 5.5 A | | |
| NEMA CODE LETTER | G | | |
| EFFICIENCY / POWER FACTOR | <u>LOAD</u> | <u>EFF.</u> | <u>P.F.</u> |
| | 100% | 91.0% | 0.89 |
| | 75% | 91.4% | 0.88 |
| | 50% | 91.3% | 0.84 |
| DUTY CYCLE | CONTINUOUS | | |
| TORQUE | <u>FULL LOAD</u> | <u>LRT</u> | <u>BDT</u> |
| | 29.6 lb.ft. | 160% | 210% |
| | | | |
| SLIP | 1.50% | | |
| NEMA DESIGN | B | | |
| MOMENT OF INERTIA | 1.31 lb.ft. ² | | |
| SOUND PRESSURE LEVEL | 88 dB(A) | | |
| MAX. TIME LOCKED ROTOR (Hot) | 15 Seconds | | |
| MAX. AMBIENT TEMPERATURE | 40° C | | |
| MAX. ELEVATION | 3300 Ft. Above Sea Level | | |
| TEMPERATURE RISE (At Full Load) | 80° C | | |
| DE BEARING | 6309C3 | | |
| ODE BEARING | 6209C3 | | |
| REGREASING INT. - DE BEARING | 3,500 Hours (0.46 oz.) | | |
| REGREASING INT. - ODE BEARING | 3,500 Hours (0.29 oz.) | | |
| GREASE TYPE | Mobil Polyrex EM | | |
| MOUNTING | F1 | | |
| ROTATION | Bi-Directional | | |
| C-FLANGE | PEW250TC | | |
| D-FLANGE | PEW250TD | | |
| SHAFT MATERIAL | 1045 Carbon Steel | | |
| CONNECTION DIAGRAM | 230 / 460 V - 9 Lead Δ | | |
| APPROXIMATE WEIGHT | 306 lbs. | | |
| INVERTER RATING | 4:1 CT / 10:1 VT PWM Type | | |



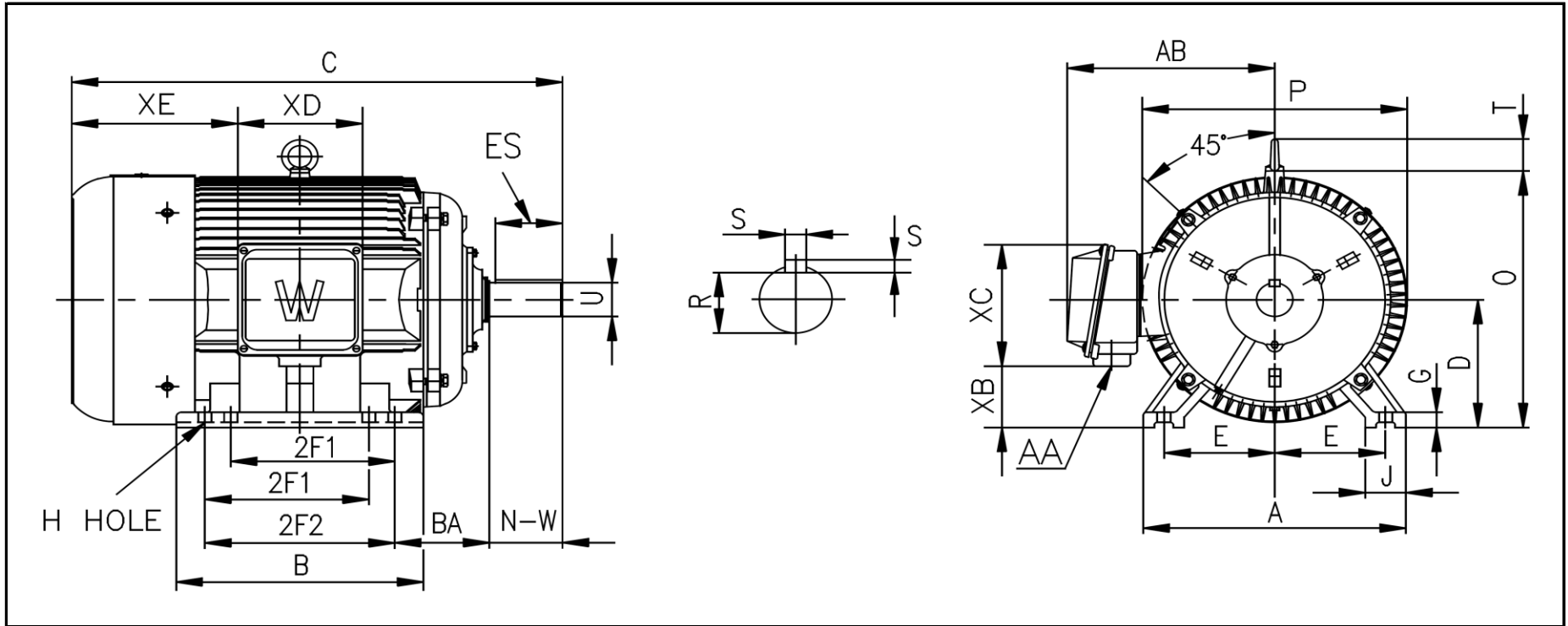
CC006A





WORLDWIDE ELECTRIC MOTOR DRAWING

PEWWE-256T



DIMENSIONS - INCHES

| MOUNTING | | | | | A | B | C | D | G | J | P | O | T | AB |
|----------|------|-----|------|------|------|------|-------|------|-------|------|------|-------|------|------|
| E | 2F1 | 2F2 | H | BA | | | | | | | | | | |
| 5 | 8.25 | 10 | 0.53 | 4.25 | 12.4 | 14.3 | 27.83 | 6.25 | 0.787 | 2.76 | 12.6 | 12.89 | 2.05 | 11.2 |

| KEY | | KEYSET | SHAFT | | TERMINAL BOX | | | | |
|-------|------|--------|-------|-------|--------------|----|-----|-----|-------|
| S | ES | R | N-W | U | AA | XB | XC | XD | XE |
| 0.375 | 2.91 | 1.416 | 4 | 1.625 | 1.5 | 3 | 7.2 | 6.3 | 10.04 |