



WORLDWIDE ELECTRIC MOTOR DATA SHEET



EP15-18-254T

HORSEPOWER	15		
RPM / POLES	1800 / 4		
VOLTAGE / PHASE	230 / 460 V / 3		
FRAME	254T		
ENCLOSURE / DEGREE OF PROTECTION	TEFC / IP55		
FREQUENCY	60 HZ Suitable For 50 HZ Operation With 1.0 SF		
FULL LOAD SPEED	1750 RPM		
SERVICE FACTOR	1.25 SF at 40° C / 1.0 SF at 55° C		
INSULATION CLASS	F		
FULL LOAD AMPS; 230 / 460	34.2 / 17.1 A		
LOCKED ROTOR AMPS (STARTING); 230 / 460	232 / 116 A		
NO LOAD CURRENT	14.4 / 7.2 A		
NEMA CODE LETTER	G		
EFFICIENCY / POWER FACTOR	<u>LOAD</u>	<u>EFF.</u>	<u>P.F.</u>
	100%	92.5%	0.89
	75%	92.4%	0.87
	50%	90.5%	0.82
DUTY CYCLE	S1 / Continuous		
TORQUE	<u>FULL LOAD</u>	<u>LRT</u>	<u>BDT</u>
	45.0 lb.ft.	205%	260%
SLIP	2.80%		
NEMA DESIGN	B		
MOMENT OF INERTIA	3.33 lb.ft. ²		
NUMBER OF STARTS (Hot / Cold)	2 Hot / 3 Cold		
MAX. AMBIENT TEMPERATURE	40° C at 1.25 SF / 55° C at 1.0 SF		
MAX. ELEVATION	3300 Ft. Above Sea Level		
TEMPERATURE RISE (At Full Load)	80° C		
DE BEARING	6309		
ODE BEARING	6308		
GREASE TYPE	Mobil Polyrex EM		
MOUNTING	F1 (F2 Suitable)		
ROTATION	Bi-Directional		
APPROXIMATE WEIGHT	294 lbs.		
AREA CLASSIFICATION	Class I, Division 2, Groups A, B, C, D		
TEMPERATURE CODE AT 40°C AMBIENT	T3C		
TEMPERATURE CODE AT 55°C AMBIENT	T3A		
INVERTER RATING	10:1 CT / 20:1 VT PWM Type		
SPECIFICATION - In Accordance With	NEMA, CSA		

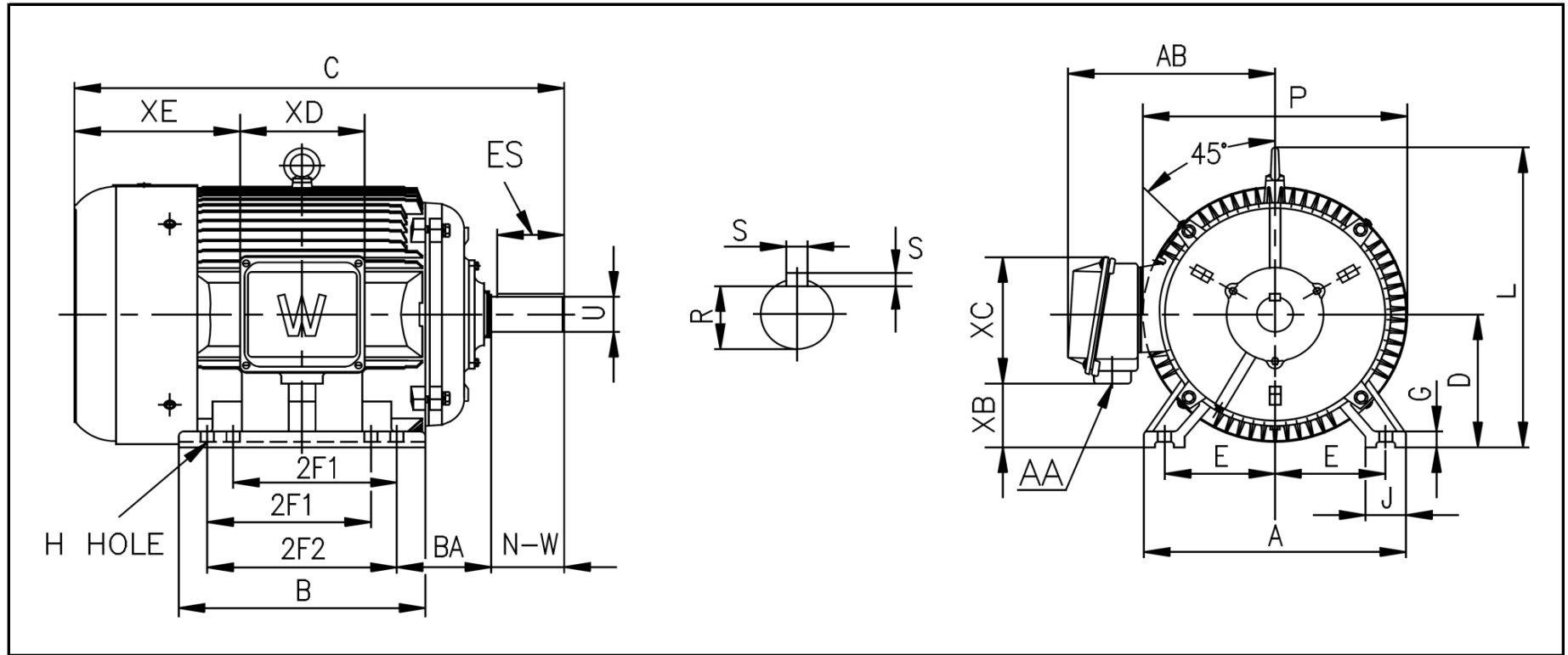


CC067A



WORLDWIDE ELECTRIC MOTOR DRAWING

EP-254T



DIMENSIONS - INCHES

MOUNTING					A	B	C	D	G	J	P	L	AB
E	2F1	2F2	H	BA									
5	8.25	---	0.53	4.25	12.25	10.31	23.46	6.25	0.866	2.4	14.64	15.62	10.9

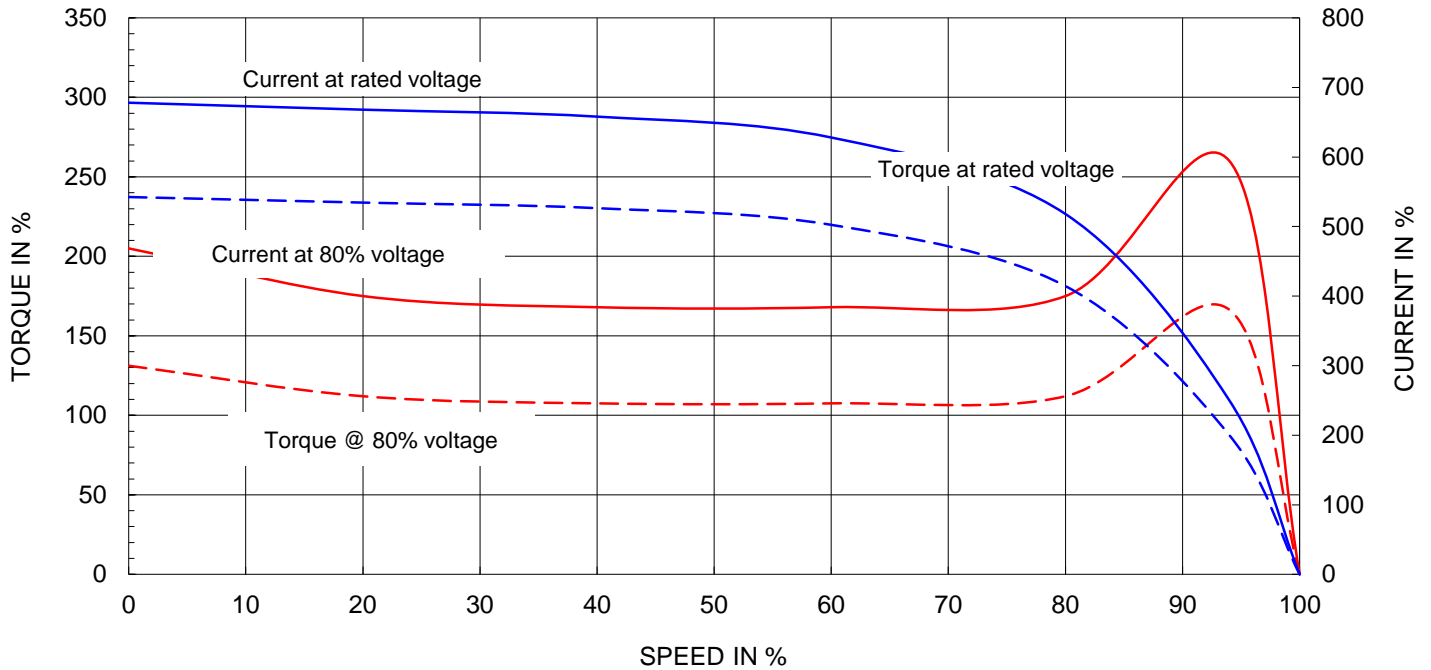
KEY		KEYSET	SHAFT		TERMINAL BOX				
S	ES	R	N-W	U	AA	XB	XC	XD	XE
0.375	2.91	1.416	4	1.625	1.5	3	7.2	6.3	7.76



Motor Performance Curves

Motor type:	EPIC				
Output rating (HP)	15	FL Speed:	1750		
Full Load Torque :	45 lb.ft	LRT (% FLT):	205	460 volt FLA:	17.1
Rotor Wk^2:	3.33 lb-ft^2	BDT (% FLT):	260	230 volt FLA:	34.2

SPEED VS TORQUE & CURRENT CURVE



OUTPUT VS EFF., P.F & CURRENT CURVE

