



WORLDWIDE ELECTRIC MOTOR DATA SHEET



PEWWE10-36-215T

| | | | |
|---|--|-------------|-------------|
| HORSEPOWER | 10 | | |
| RPM / POLES | 3600 / 2 | | |
| VOLTAGE / PHASE | 230 / 460 V / 3 | | |
| FRAME | 215T | | |
| ENCLOSURE / DEGREE OF PROTECTION | TEFC / IP54 | | |
| FREQUENCY | 60 HZ Suitable For 50 HZ Operation With 1.0 SF | | |
| FULL LOAD SPEED | 3520 RPM | | |
| SERVICE FACTOR | 1.15 | | |
| INSULATION CLASS | F | | |
| FULL LOAD AMPS; 230 / 460 | 23.2 / 11.6 A Usable On 208 V At 25.7 A | | |
| LOCKED ROTOR AMPS (STARTING); 230 / 460 | 192 / 96.0 A | | |
| NO LOAD CURRENT | 7.4 / 3.7 A | | |
| NEMA CODE LETTER | J | | |
| EFFICIENCY / POWER FACTOR | <u>LOAD</u> | <u>EFF.</u> | <u>P.F.</u> |
| | 100% | 90.2% | 0.90 |
| | 75% | 90.6% | 0.89 |
| | 50% | 90.4% | 0.82 |
| DUTY CYCLE | CONTINUOUS | | |
| TORQUE | <u>FULL LOAD</u> | <u>LRT</u> | <u>BDT</u> |
| | 14.9 lb.ft. | 210% | 300% |
| | SLIP | | |
| SLIP | 2.22% | | |
| NEMA DESIGN | A | | |
| MOMENT OF INERTIA | 0.349 lb.ft. ² | | |
| SOUND PRESSURE LEVEL | 77 dB(A) | | |
| MAX. TIME LOCKED ROTOR (Hot) | 14 Seconds | | |
| MAX. AMBIENT TEMPERATURE | 40° C | | |
| MAX. ELEVATION | 3300 Ft. Above Sea Level | | |
| TEMPERATURE RISE (At Full Load) | 80° C | | |
| DE BEARING | 6308ZZC3 | | |
| ODE BEARING | 6306ZZC3 | | |
| REGREASING INT. - DE BEARING | --- | | |
| REGREASING INT. - ODE BEARING | --- | | |
| GREASE TYPE | Mobil Polyrex EM | | |
| MOUNTING | F1 | | |
| ROTATION | Bi-Directional | | |
| C-FLANGE | PEW210TC | | |
| D-FLANGE | PEW210TD | | |
| SHAFT MATERIAL | 1045 Carbon Steel | | |
| CONNECTION DIAGRAM | 230 / 460 V - 9 Lead Δ | | |
| APPROXIMATE WEIGHT | 185 lbs. | | |
| INVERTER RATING | 4:1 CT / 10:1 VT PWM Type | | |



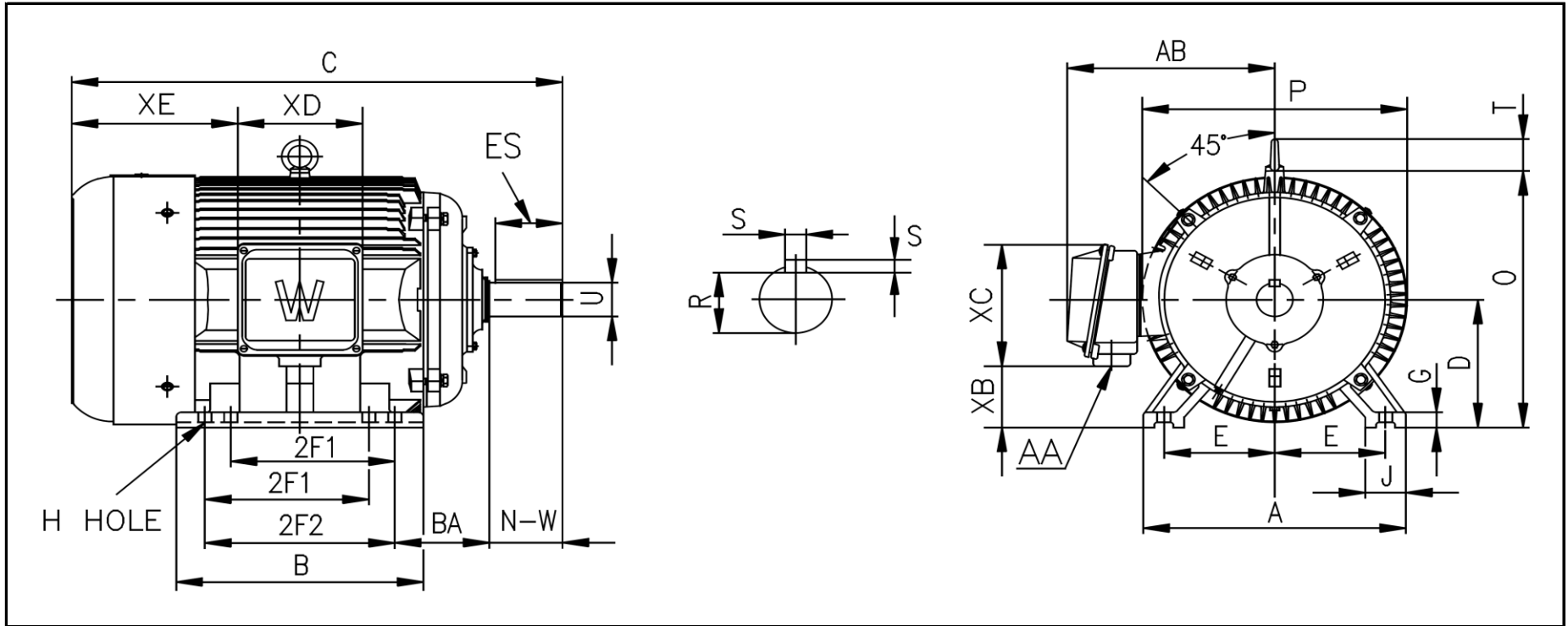
CC006A





WORLDWIDE ELECTRIC MOTOR DRAWING

PEWWE-215T



DIMENSIONS - INCHES

| MOUNTING | | | | | A | B | C | D | G | J | P | O | T | AB |
|----------|-----|-----|------|-----|------|------|-------|------|-------|------|------|-------|------|------|
| E | 2F1 | 2F2 | H | BA | | | | | | | | | | |
| 4.25 | 5.5 | 7 | 0.43 | 3.5 | 10.5 | 10.3 | 21.69 | 5.25 | 0.709 | 2.36 | 10.4 | 10.53 | 1.73 | 8.66 |

| KEY | | KEYSET | SHAFT | | TERMINAL BOX | | | | |
|-------|------|--------|-------|-------|--------------|------|----|------|------|
| S | ES | R | N-W | U | AA | XB | XC | XD | XE |
| 0.312 | 2.41 | 1.201 | 3.38 | 1.375 | 1 | 2.95 | 5 | 4.57 | 8.22 |