



WORLDWIDE ELECTRIC MOTOR DATA SHEET



PEWWE7.5-12-254T

HORSEPOWER	7.5		
RPM / POLES	1200 / 6		
VOLTAGE / PHASE	230 / 460 V / 3		
FRAME	254T		
ENCLOSURE / DEGREE OF PROTECTION	TEFC / IP54		
FREQUENCY	60 HZ Suitable For 50 HZ Operation With 1.0 SF		
FULL LOAD SPEED	1185 RPM		
SERVICE FACTOR	1.15		
INSULATION CLASS	F		
FULL LOAD AMPS; 230 / 460	20.8 / 10.4 A Usable On 208 V At 23.0 A		
LOCKED ROTOR AMPS (STARTING); 230 / 460	127 / 63.5 A		
NO LOAD CURRENT	11.6 / 5.8 A		
NEMA CODE LETTER	H		
EFFICIENCY / POWER FACTOR	<u>LOAD</u>	<u>EFF.</u>	<u>P.F.</u>
	100%	91.0%	0.73
	75%	90.8%	0.66
	50%	89.5%	0.53
DUTY CYCLE	CONTINUOUS		
TORQUE	<u>FULL LOAD</u>	<u>LRT</u>	<u>BDT</u>
	33.2 lb.ft.	170%	260%
SLIP	1.25%		
NEMA DESIGN	B		
MOMENT OF INERTIA	2.11 lb.ft. ²		
SOUND PRESSURE LEVEL	70 dB(A)		
MAX. TIME LOCKED ROTOR (Hot)	23 Seconds		
MAX. AMBIENT TEMPERATURE	40° C		
MAX. ELEVATION	3300 Ft. Above Sea Level		
TEMPERATURE RISE (At Full Load)	80° C		
DE BEARING	6309C3		
ODE BEARING	6209C3		
REGREASING INT. - DE BEARING	13,400 Hours (0.46 oz.)		
REGREASING INT. - ODE BEARING	13,400 Hours (0.29 oz.)		
GREASE TYPE	Mobil Polyrex EM		
MOUNTING	F1 (F2 Suitable)		
ROTATION	Bi-Directional		
C-FLANGE	PEW250TC		
D-FLANGE	PEW250TD		
SHAFT MATERIAL	1045 Carbon Steel		
CONNECTION DIAGRAM	230 / 460 V - 9 Lead Δ		
APPROXIMATE WEIGHT	265 lbs.		
INVERTER RATING	4:1 CT / 10:1 VT PWM Type		



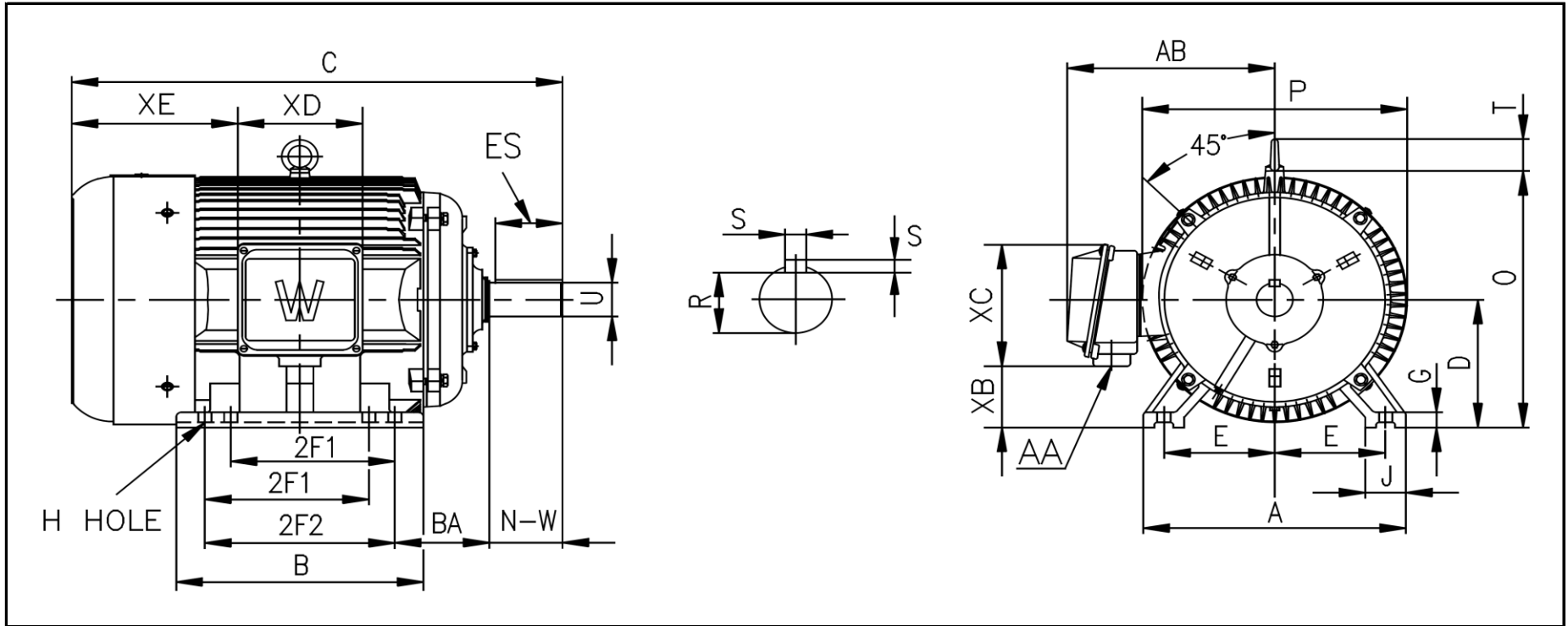
CC006A





WORLDWIDE ELECTRIC MOTOR DRAWING

PEWWE-254T



DIMENSIONS - INCHES

MOUNTING					A	B	C	D	G	J	P	O	T	AB
E	2F1	2F2	H	BA										
5	8.25	10	0.53	4.25	12.5	12.5	25.06	6.25	0.787	2.76	12.6	12.89	2.05	11.2

KEY		KEYSET	SHAFT		TERMINAL BOX				
S	ES	R	N-W	U	AA	XB	XC	XD	XE
0.375	2.91	1.416	4	1.625	1.5	3	7.2	6.3	8.66