



WORLDWIDE ELECTRIC MOTOR DATA SHEET



PEWWE7.5-18-213T

HORSEPOWER	7.5		
RPM / POLES	1800 / 4		
VOLTAGE / PHASE	230 / 460 V / 3		
FRAME	213T		
ENCLOSURE / DEGREE OF PROTECTION	TEFC / IP54		
FREQUENCY	60 HZ Suitable For 50 HZ Operation With 1.0 SF		
FULL LOAD SPEED	1765 RPM		
SERVICE FACTOR	1.15		
INSULATION CLASS	F		
FULL LOAD AMPS; 230 / 460	18.6 / 9.29 A Usable On 208 V At 20.6 A		
LOCKED ROTOR AMPS (STARTING); 230 / 460	153 / 76.5 A		
NO LOAD CURRENT	9.2 / 4.6 A		
NEMA CODE LETTER	K		
EFFICIENCY / POWER FACTOR	<u>LOAD</u>	<u>EFF.</u>	<u>P.F.</u>
	100%	91.7%	0.81
	75%	91.5%	0.75
	50%	90.7%	0.64
DUTY CYCLE	CONTINUOUS		
TORQUE	<u>FULL LOAD</u>	<u>LRT</u>	<u>BDT</u>
	22.3 lb.ft.	210%	300%
SLIP	1.90%		
NEMA DESIGN	A		
MOMENT OF INERTIA	0.737 lb.ft. ²		
SOUND PRESSURE LEVEL	70 dB(A)		
MAX. TIME LOCKED ROTOR (Hot)	15 Seconds		
MAX. AMBIENT TEMPERATURE	40° C		
MAX. ELEVATION	3300 Ft. Above Sea Level		
TEMPERATURE RISE (At Full Load)	80° C		
DE BEARING	6308ZZC3		
ODE BEARING	6306ZZC3		
REGREASING INT. - DE BEARING	---		
REGREASING INT. - ODE BEARING	---		
GREASE TYPE	Mobil Polyrex EM		
MOUNTING	F1 (F2 Suitable)		
ROTATION	Bi-Directional		
C-FLANGE	PEW210TC		
D-FLANGE	PEW210TD		
SHAFT MATERIAL	1045 Carbon Steel		
CONNECTION DIAGRAM	230 / 460 V - 9 Lead Δ		
APPROXIMATE WEIGHT	181 lbs.		
INVERTER RATING	4:1 CT / 10:1 VT PWM Type		



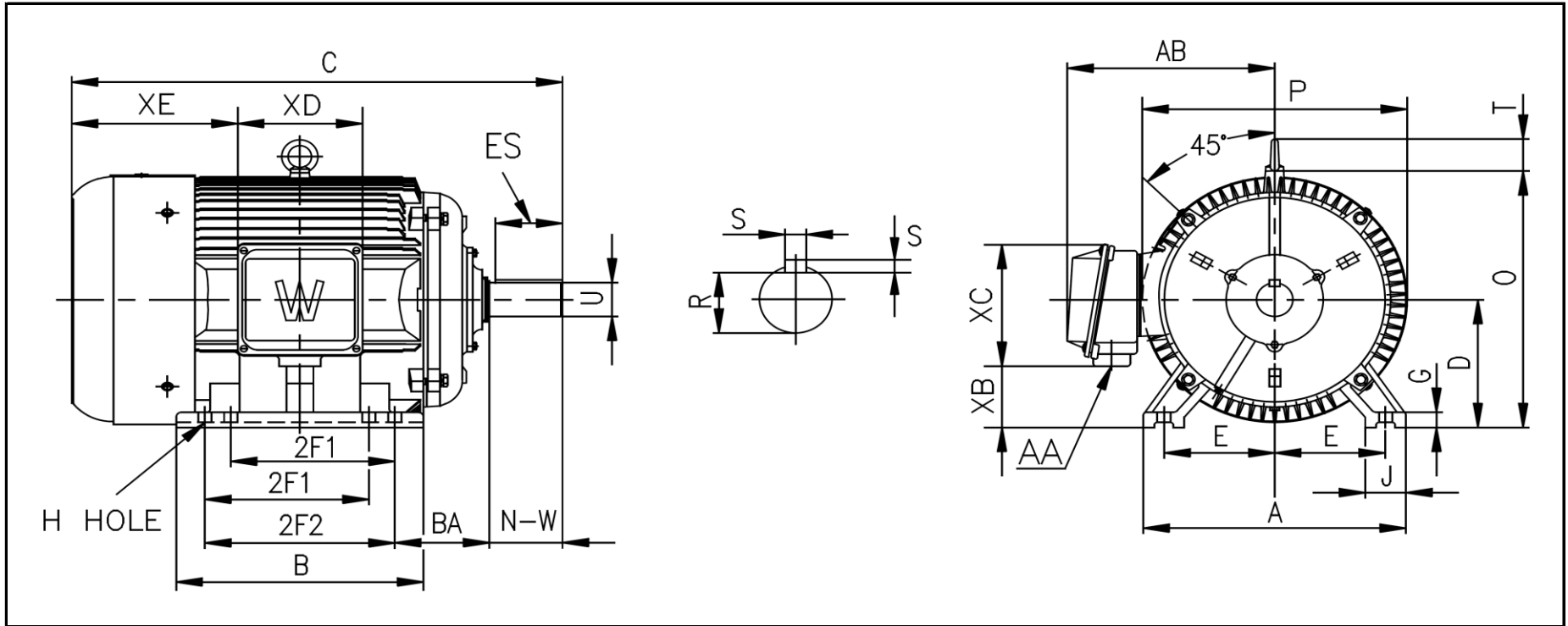
CC006A





WORLDWIDE ELECTRIC MOTOR DRAWING

PEWWE-213T



DIMENSIONS - INCHES

MOUNTING					A	B	C	D	G	J	P	O	T	AB
E	2F1	2F2	H	BA										
4.25	5.5	7	0.43	3.5	10.4	8.8	20.19	5.25	0.709	2.36	10.4	10.53	1.73	8.66

KEY		KEYSET	SHAFT		TERMINAL BOX				
S	ES	R	N-W	U	AA	XB	XC	XD	XE
0.312	2.41	1.201	3.38	1.375	1	2.95	5	4.57	7.48