



WORLDWIDE ELECTRIC MOTOR DATA SHEET

EP5-36-184T



HORSEPOWER	5		
RPM / POLES	3600 / 2		
VOLTAGE / PHASE	230 / 460 V / 3		
FRAME	184T		
ENCLOSURE / DEGREE OF PROTECTION	TEFC / IP55		
FREQUENCY	60 HZ Suitable For 50 HZ Operation With 1.0 SF		
FULL LOAD SPEED	3570 RPM		
SERVICE FACTOR	1.25 SF at 40° C / 1.0 SF at 55° C		
INSULATION CLASS	F		
FULL LOAD AMPS; 230 / 460	12.6 / 6.3 A		
LOCKED ROTOR AMPS (STARTING); 230 / 460	92.0 / 46.0 A		
NO LOAD CURRENT	5.2 / 2.6 A		
NEMA CODE LETTER	J		
EFFICIENCY / POWER FACTOR	<u>LOAD</u>	<u>EFF.</u>	<u>P.F.</u>
	100%	89.0%	0.84
	75%	88.5%	0.84
	50%	85.2%	0.78
DUTY CYCLE	S1 / Continuous		
TORQUE	<u>FULL LOAD</u>	<u>LRT</u>	<u>BDT</u>
	7.36 lb.ft.	205%	260%
	0.83%		
SLIP	0.83%		
NEMA DESIGN	B		
MOMENT OF INERTIA	0.22 lb.ft. ²		
NUMBER OF STARTS (Hot / Cold)	2 Hot / 3 Cold		
MAX. AMBIENT TEMPERATURE	40° C at 1.25 SF / 55° C at 1.0 SF		
MAX. ELEVATION	3300 Ft. Above Sea Level		
TEMPERATURE RISE (At Full Load)	80° C		
DE BEARING	6306ZZ		
ODE BEARING	6306ZZ		
GREASE TYPE	Mobil Polyrex EM		
MOUNTING	F1 (F2 Suitable)		
ROTATION	Bi-Directional		
APPROXIMATE WEIGHT	95 lbs.		
AREA CLASSIFICATION	Class I, Division 2, Groups A, B, C, D		
INVERTER RATING	10:1 CT / 20:1 VT PWM Type		
SPECIFICATION - In Accordance With	NEMA, CSA		



CC067A

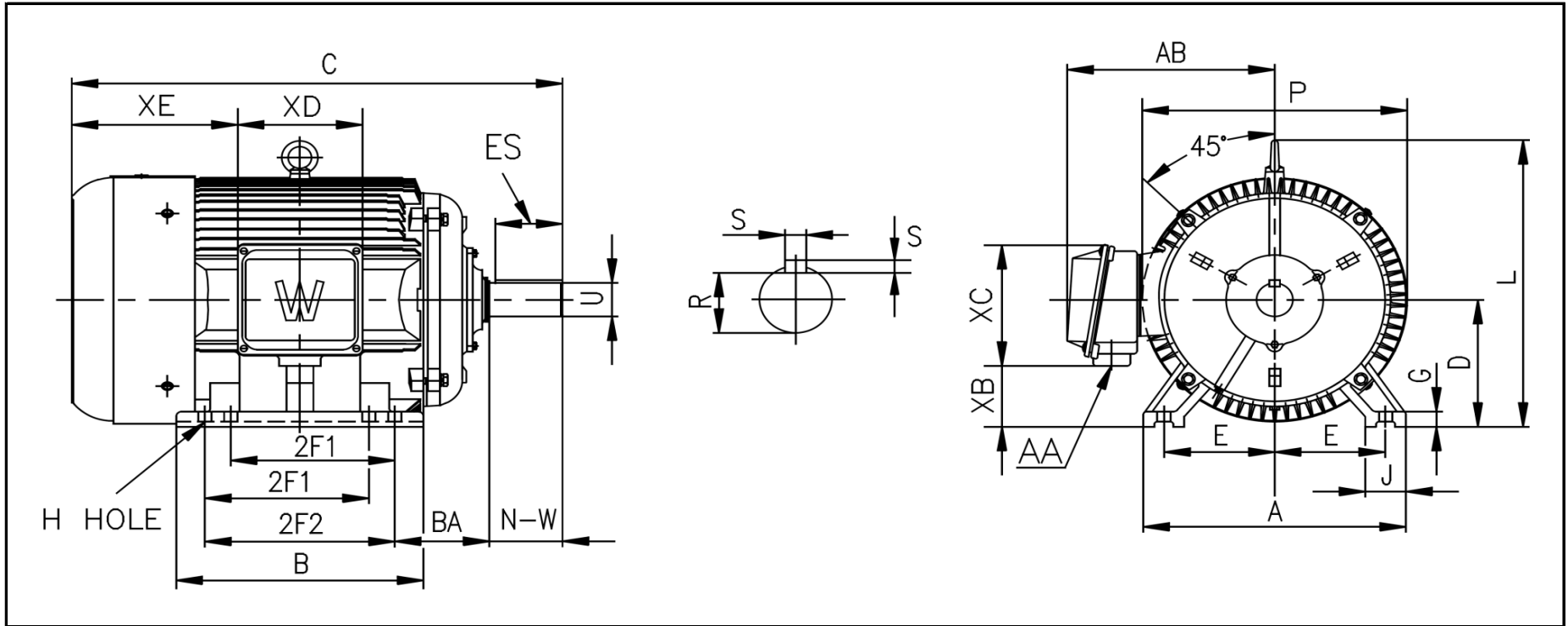


MARCH 10, 2015



WORLDWIDE ELECTRIC MOTOR DRAWING

EP-184T



DIMENSIONS - INCHES

MOUNTING					A	B	C	D	G	J	P	L	AB
E	2F1	2F2	H	BA									
3.75	4.5	5.5	0.41	2.75	8.9	7.1	16.2	4.5	0.52	1.97	9.17	10.39	7.32

KEY		KEYSET	SHAFT		TERMINAL BOX				
S	ES	R	N-W	U	AA	XB	XC	XD	XE
0.25	1.78	0.986	2.75	1.125	1	2.05	5	4.57	5.39