



WORLDWIDE ELECTRIC MOTOR DATA SHEET



PEWWE3-36-182T

HORSEPOWER	3		
RPM / POLES	3600 / 2		
VOLTAGE / PHASE	230 / 460 V / 3		
FRAME	182T		
ENCLOSURE / DEGREE OF PROTECTION	TEFC / IP54		
FREQUENCY	60 HZ Suitable For 50 HZ Operation With 1.0 SF		
FULL LOAD SPEED	3510 RPM		
SERVICE FACTOR	1.15		
INSULATION CLASS	F		
FULL LOAD AMPS; 230 / 460	7.42 / 3.71 A Usable On 208 V At 8.21 A		
LOCKED ROTOR AMPS (STARTING); 230 / 460	64.0 / 32.0 A		
NO LOAD CURRENT	4.4 / 2.2 A		
NEMA CODE LETTER	K		
EFFICIENCY / POWER FACTOR	<u>LOAD</u>	<u>EFF.</u>	<u>P.F.</u>
	100%	86.5%	0.86
	75%	86.6%	0.80
	50%	85.7%	0.69
DUTY CYCLE	CONTINUOUS		
TORQUE	<u>FULL LOAD</u>	<u>LRT</u>	<u>BDT</u>
	4.49 lb.ft.	250%	350%
SLIP	2.50%		
NEMA DESIGN	B		
MOMENT OF INERTIA	0.113 lb.ft. ²		
SOUND PRESSURE LEVEL	75 dB(A)		
MAX. TIME LOCKED ROTOR (Hot)	12 Seconds		
MAX. AMBIENT TEMPERATURE	40° C		
MAX. ELEVATION	3300 Ft. Above Sea Level		
TEMPERATURE RISE (At Full Load)	80° C		
DE BEARING	6306ZZC3		
ODE BEARING	6306ZZC3		
REGREASING INT. - DE BEARING	---		
REGREASING INT. - ODE BEARING	---		
GREASE TYPE	Mobil Polyrex EM		
MOUNTING	F1 (F2 Suitable)		
ROTATION	Bi-Directional		
C-FLANGE	PEW180TC		
D-FLANGE	PEW180TD		
SHAFT MATERIAL	1045 Carbon Steel		
CONNECTION DIAGRAM	230 / 460 V - 9 Lead Y		
APPROXIMATE WEIGHT	98 lbs.		
INVERTER RATING	4:1 CT / 10:1 VT PWM Type		



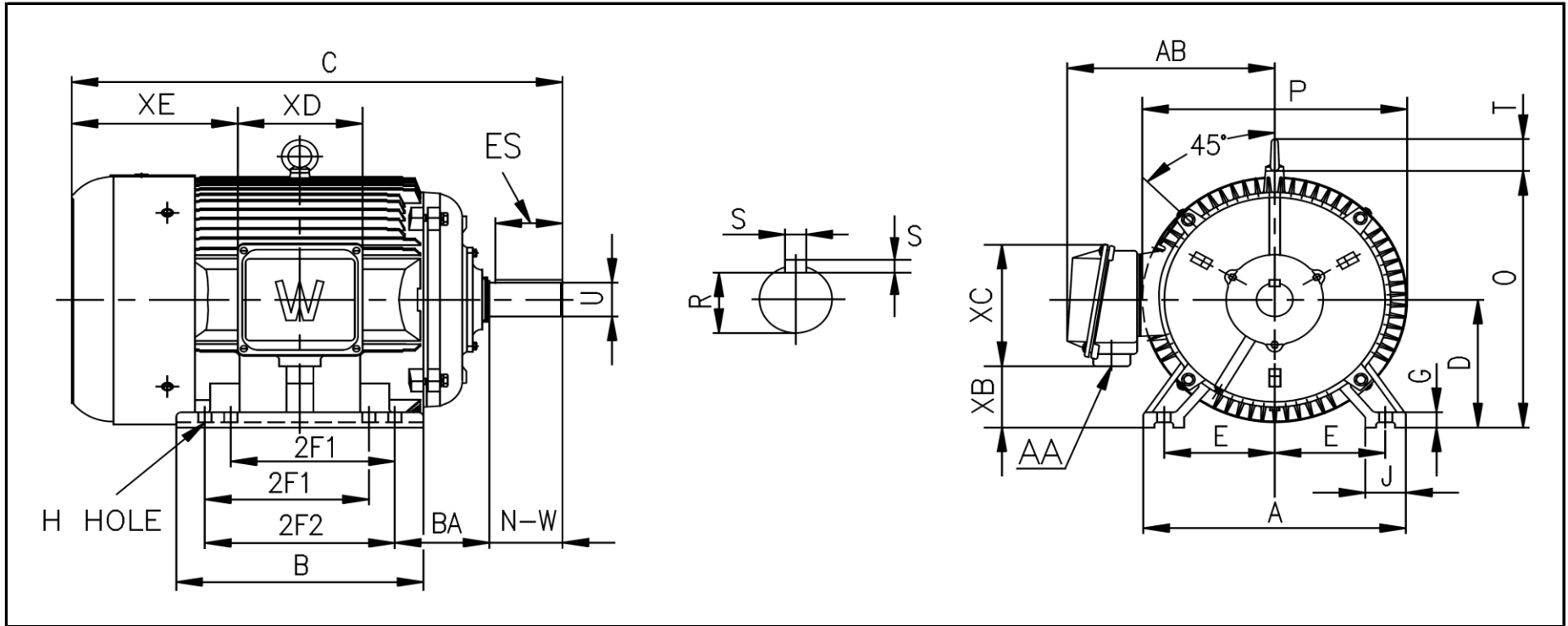
CC006A





WORLDWIDE ELECTRIC MOTOR DRAWING

PEWWE-182T-2P-6P



DIMENSIONS - INCHES

MOUNTING					A	B	C	D	G	J	P	O	T	AB
E	2F1	2F2	H	BA										
3.75	4.5	5.5	0.43	2.75	9	7.1	15.9	4.5	0.59	1.97	9.06	8.97	---	7.48

KEY		KEYSET	SHAFT		TERMINAL BOX				
S	ES	R	N-W	U	AA	XB	XC	XD	XE
0.25	1.78	0.986	2.75	1.125	1	2.05	5	4.57	5.39