



# WORLDWIDE ELECTRIC MOTOR DATA SHEET



## PEWWE1.5-18-145T

HORSEPOWER	1.5		
RPM / POLES	1800 / 4		
VOLTAGE / PHASE	230 / 460 V / 3		
FRAME	145T		
ENCLOSURE / DEGREE OF PROTECTION	TEFC / IP54		
FREQUENCY	60 HZ Suitable For 50 HZ Operation With 1.0 SF		
FULL LOAD SPEED	1760 RPM		
SERVICE FACTOR	1.15		
INSULATION CLASS	F		
FULL LOAD AMPS; 230 / 460	4.56 / 2.28 A Usable On 208 V At 5.04 A		
LOCKED ROTOR AMPS (STARTING); 230 / 460	40.0 / 20.0 A		
NO LOAD CURRENT	3.1 / 1.55 A		
NEMA CODE LETTER	M		
EFFICIENCY / POWER FACTOR	<u>LOAD</u>	<u>EFF.</u>	<u>P.F.</u>
	100%	86.5%	0.70
	75%	86.1%	0.63
	50%	84.4%	0.51
DUTY CYCLE	CONTINUOUS		
TORQUE	<u>FULL LOAD</u>	<u>LRT</u>	<u>BDT</u>
	4.47 lb.ft.	280%	300%
SLIP	2.22%		
NEMA DESIGN	B		
MOMENT OF INERTIA	0.099 lb.ft. <sup>2</sup>		
SOUND PRESSURE LEVEL	66 dB(A)		
MAX. TIME LOCKED ROTOR (Hot)	14 Seconds		
MAX. AMBIENT TEMPERATURE	40° C		
MAX. ELEVATION	3300 Ft. Above Sea Level		
TEMPERATURE RISE (At Full Load)	80° C		
DE BEARING	6205ZZC3		
ODE BEARING	6205ZZC3		
REGREASING INT. - DE BEARING	---		
REGREASING INT. - ODE BEARING	---		
GREASE TYPE	Mobil Polyrex EM		
MOUNTING	F1		
ROTATION	Bi-Directional		
C-FLANGE	PEW140TC		
D-FLANGE	PEW140TD		
SHAFT MATERIAL	1045 Carbon Steel		
CONNECTION DIAGRAM	230 / 460 V - 9 Lead Y		
APPROXIMATE WEIGHT	62 lbs.		
INVERTER RATING	4:1 CT / 10:1 VT PWM Type		



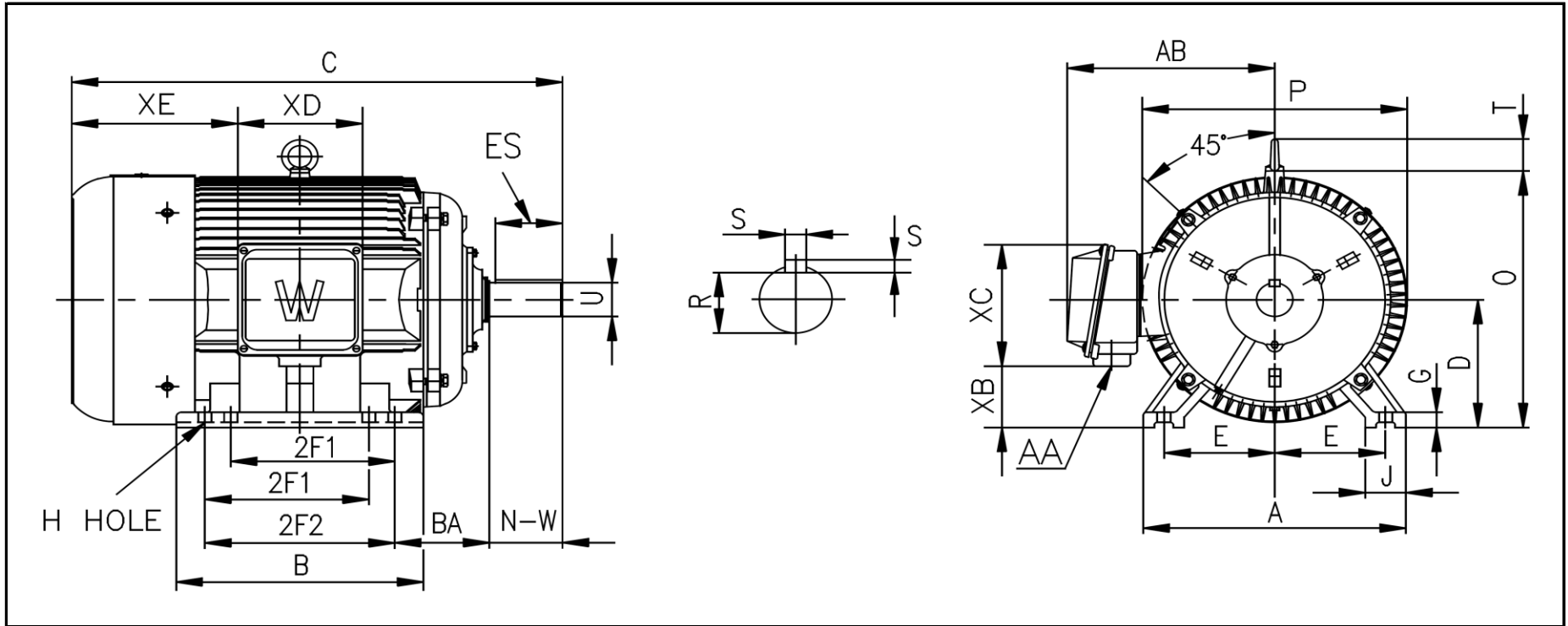
CC006A





# WORLDWIDE ELECTRIC MOTOR DRAWING

## PEWWE-145T



**DIMENSIONS - INCHES**

MOUNTING					A	B	C	D	G	J	P	O	T	AB
E	2F1	2F2	H	BA										
2.75	4	5	0.34	2.25	7	6	14.77	3.5	0.472	1.42	7.09	7.48	---	6.3

KEY		KEYSET	SHAFT		TERMINAL BOX				
S	ES	R	N-W	U	AA	XB	XC	XD	XE
0.188	1.42	0.771	2.25	0.875	3/4	1.65	4.49	4.09	5.04