



WORLDWIDE ELECTRIC MOTOR DATA SHEET

EP1.5-18-145T



HORSEPOWER	1.5		
RPM / POLES	1800 / 4		
VOLTAGE / PHASE	230 / 460 V / 3		
FRAME	145T		
ENCLOSURE / DEGREE OF PROTECTION	TEFC / IP55		
FREQUENCY	60 HZ Suitable For 50 HZ Operation With 1.0 SF		
FULL LOAD SPEED	1750 RPM		
SERVICE FACTOR	1.25 SF at 40° C / 1.0 SF at 55° C		
INSULATION CLASS	F		
FULL LOAD AMPS; 230 / 460	4.64 / 2.32 A		
LOCKED ROTOR AMPS (STARTING); 230 / 460	40.0 / 20.0 A		
NO LOAD CURRENT	3.12 / 1.56 A		
NEMA CODE LETTER	M		
EFFICIENCY / POWER FACTOR	<u>LOAD</u>	<u>EFF.</u>	<u>P.F.</u>
	100%	87.3%	0.73
	75%	86.5%	0.70
	50%	84.6%	0.61
DUTY CYCLE	S1 / Continuous		
TORQUE	<u>FULL LOAD</u>	<u>LRT</u>	<u>BDT</u>
	4.5 lb.ft.	280%	310%
SLIP	2.80%		
NEMA DESIGN	B		
MOMENT OF INERTIA	0.11 lb.ft. ²		
NUMBER OF STARTS (Hot / Cold)	2 Hot / 3 Cold		
MAX. AMBIENT TEMPERATURE	40° C at 1.25 SF / 55° C at 1.0 SF		
MAX. ELEVATION	3300 Ft. Above Sea Level		
TEMPERATURE RISE (At Full Load)	80° C		
DE BEARING	6205ZZ		
ODE BEARING	6205ZZ		
GREASE TYPE	Mobil Polyrex EM		
MOUNTING	F1 (F2 Suitable)		
ROTATION	Bi-Directional		
APPROXIMATE WEIGHT	55 lbs.		
AREA CLASSIFICATION	Class I, Division 2, Groups A, B, C, D		
INVERTER RATING	10:1 CT / 20:1 VT PWM Type		
SPECIFICATION - In Accordance With	NEMA, CSA		



CC067A

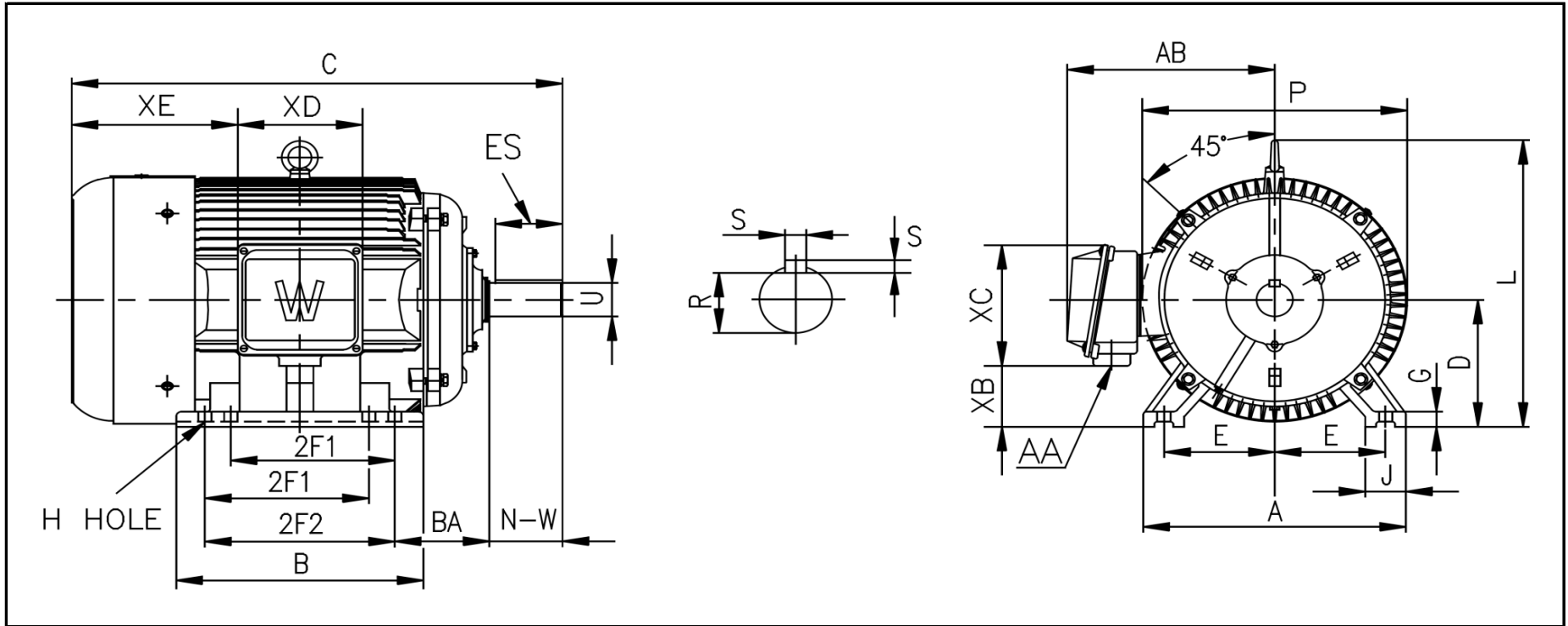


MARCH 10, 2015



WORLDWIDE ELECTRIC MOTOR DRAWING

EP-145T



DIMENSIONS - INCHES

MOUNTING					A	B	C	D	G	J	P	L	AB
E	2F1	2F2	H	BA									
2.75	4	5	0.34	2.25	7	7.5	15.2	3.5	0.55	1.5	7.1	7.1	6.3

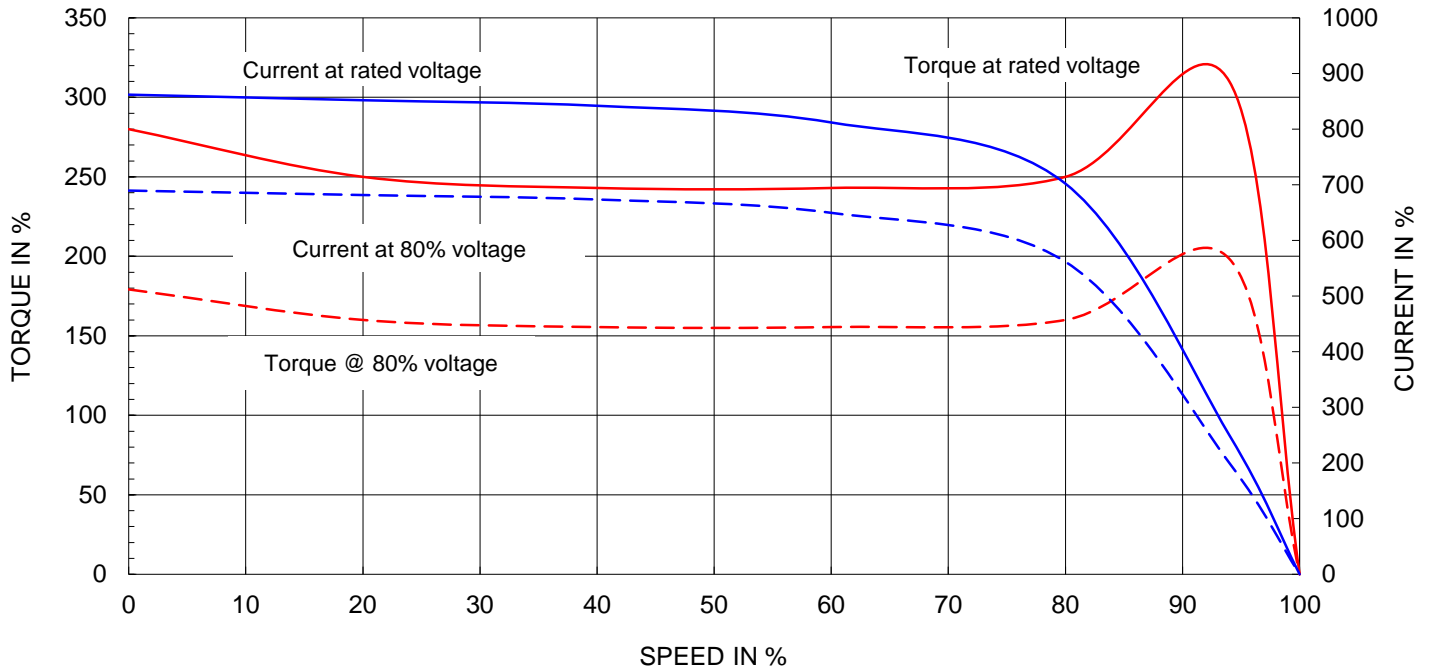
KEY		KEYSET	SHAFT		TERMINAL BOX				
S	ES	R	N-W	U	AA	XB	XC	XD	XE
0.188	1.41	0.771	2.25	0.875	3/4	1.8	4.5	4.1	4.7



Motor Performance Curves

Motor type:	EPIC				
Output rating (HP)	1.5	FL Speed:	1750		
Full Load Torque :	4.5 lb.ft	LRT (% FLT):	280	460 volt FLA:	2.3
Rotor Wk ² :	0.11 lb-ft ²	BDT (% FLT):	310	230 volt FLA:	4.6

SPEED VS TORQUE & CURRENT CURVE



OUTPUT VS EFF., P.F & CURRENT CURVE

