



# WORLDWIDE ELECTRIC MOTOR DATA SHEET

## PEWWE1-18-143T



HORSEPOWER	1		
RPM / POLES	1800 / 4		
VOLTAGE / PHASE	230 / 460 V / 3		
FRAME	143T		
ENCLOSURE / DEGREE OF PROTECTION	TEFC / IP54		
FREQUENCY	60 HZ Suitable For 50 HZ Operation With 1.0 SF		
FULL LOAD SPEED	1760 RPM		
SERVICE FACTOR	1.15		
INSULATION CLASS	F		
FULL LOAD AMPS; 230 / 460	3.29 / 1.64 A Usable On 208 V At 3.64 A		
LOCKED ROTOR AMPS (STARTING); 230 / 460	30.0 / 15.0 A		
NO LOAD CURRENT	2.4 / 1.2 A		
NEMA CODE LETTER	N		
EFFICIENCY / POWER FACTOR	<u>LOAD</u>	<u>EFF.</u>	<u>P.F.</u>
	100%	85.5%	0.67
	75%	85.0%	0.61
	50%	82.9%	0.50
DUTY CYCLE	CONTINUOUS		
TORQUE	<u>FULL LOAD</u>	<u>LRT</u>	<u>BDT</u>
	2.98 lb.ft.	280%	290%
SLIP	2.22%		
NEMA DESIGN	B		
MOMENT OF INERTIA	0.0864 lb.ft. <sup>2</sup>		
SOUND PRESSURE LEVEL	65 dB(A)		
MAX. TIME LOCKED ROTOR (Hot)	20 Seconds		
MAX. AMBIENT TEMPERATURE	40° C		
MAX. ELEVATION	3300 Ft. Above Sea Level		
TEMPERATURE RISE (At Full Load)	80° C		
DE BEARING	6205ZZC3		
ODE BEARING	6205ZZC3		
REGREASING INT. - DE BEARING	---		
REGREASING INT. - ODE BEARING	---		
GREASE TYPE	Mobil Polyrex EM		
MOUNTING	F1 (F2 Suitable)		
ROTATION	Bi-Directional		
C-FLANGE	PEW140TC		
D-FLANGE	PEW140TD		
SHAFT MATERIAL	1045 Carbon Steel		
CONNECTION DIAGRAM	230 / 460 V - 9 Lead Y		
APPROXIMATE WEIGHT	53 lbs.		
INVERTER RATING	4:1 CT / 10:1 VT PWM Type		



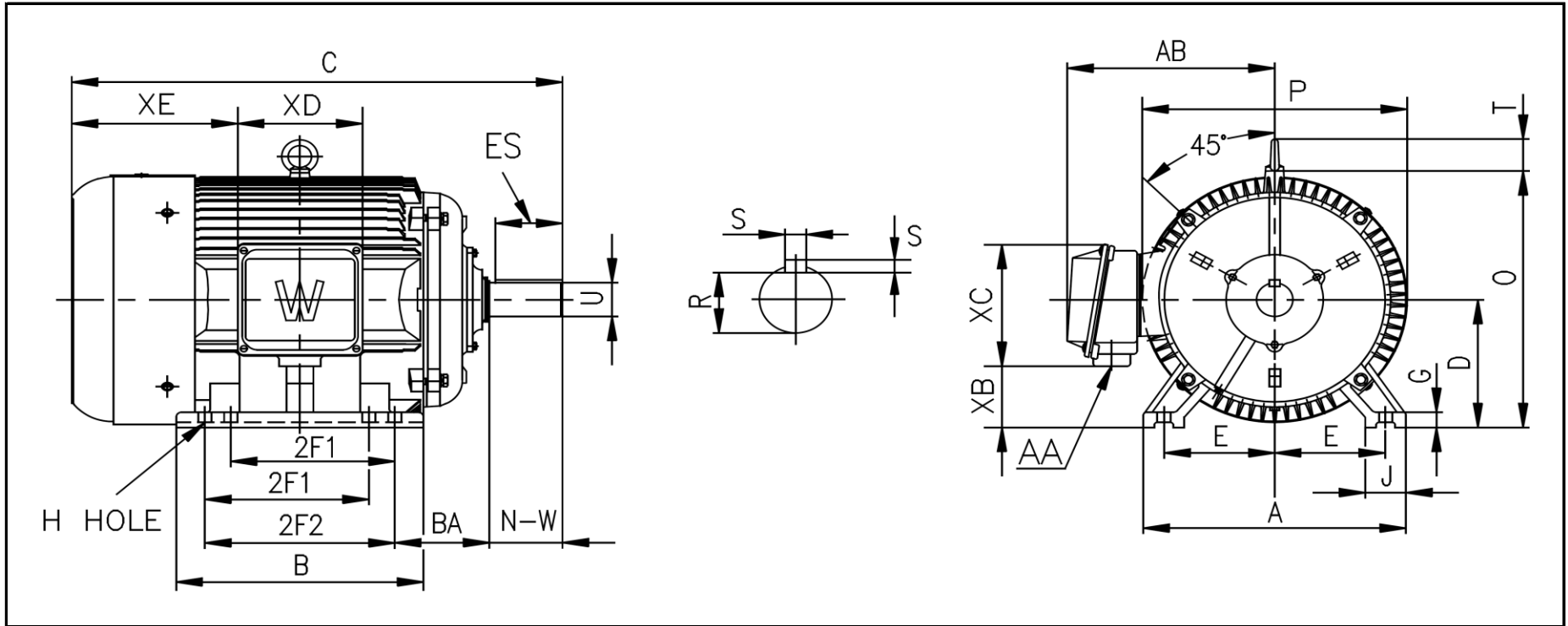
CC006A





# WORLDWIDE ELECTRIC MOTOR DRAWING

## PEWWE-143T



**DIMENSIONS - INCHES**

MOUNTING					A	B	C	D	G	J	P	O	T	AB
E	2F1	2F2	H	BA										
2.75	4	5	0.34	2.25	7	6	13.46	3.5	0.472	1.42	7.09	7.48	---	6.3

KEY		KEYSET	SHAFT		TERMINAL BOX				
S	ES	R	N-W	U	AA	XB	XC	XD	XE
0.188	1.42	0.771	2.25	0.875	3/4	1.65	4.49	4.09	4.43