



WORLDWIDE ELECTRIC MOTOR DATA SHEET



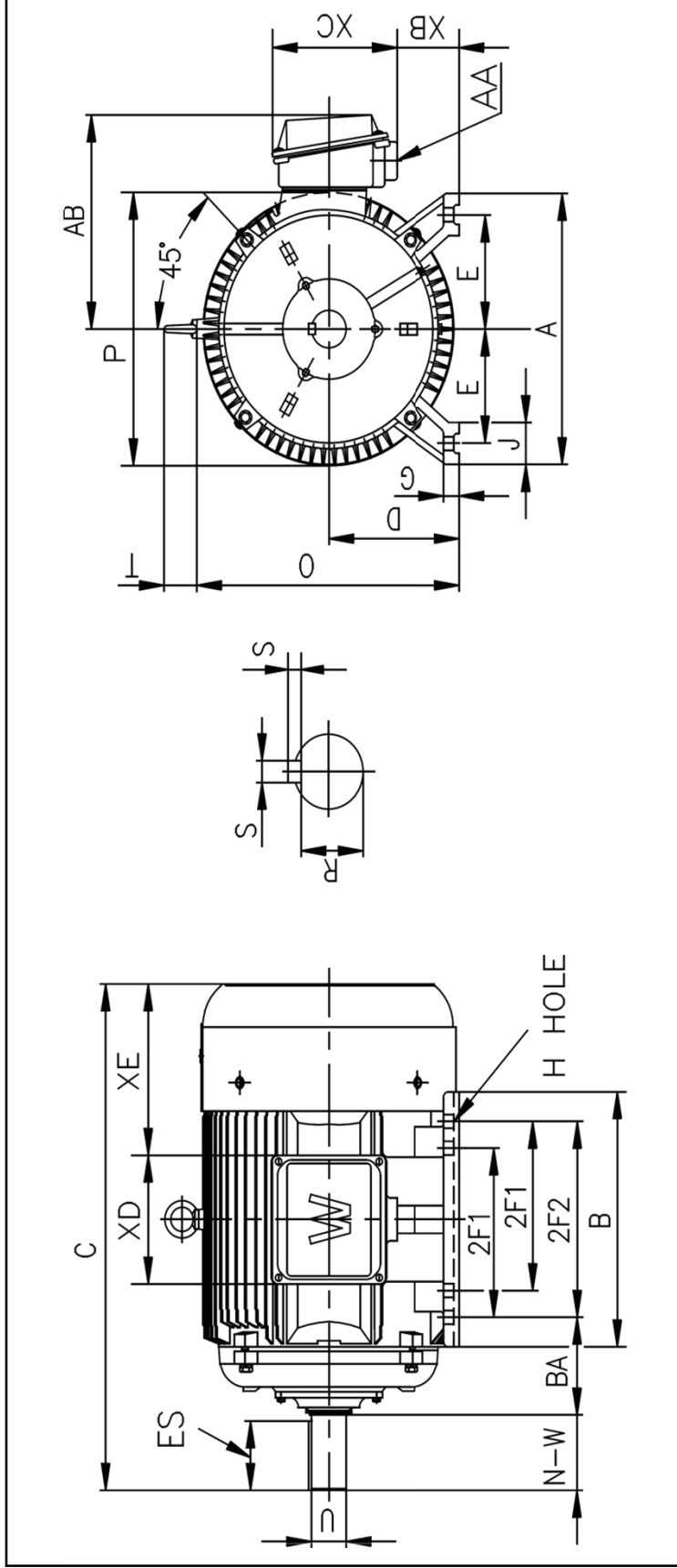
WO25-12-324T

HP	25	
RPM / POLES	1200 / 6	
VOLTAGE / PHASE	230 / 460 / 796 V 3	
FRAME	324T	
ENCLOSURE	TEFC (IP54)	
FREQUENCY	60 HZ	
RATED SPEED	1135 RPM	
FULL LOAD AMPS	63.0 / 31.5 / 18.2 A	
DUTY CYCLE	CONTINUOUS	
SERVICE FACTOR	1.15	
INSULATION CLASS	F	
AMBIENT TEMP.	40° C	
ALTITUDE	3300 FT.	
TEMP. RISE @ FULL LOAD	80° C	
DESIGN	D	
RATED TORQUE	115.6 LB. FT.	
LOCKED ROTOR TORQUE	310%	
BREAKDOWN TORQUE	300%	
LOCKED ROTOR AMPS (STARTING)	390 / 195 / 113 A	
IL / IN	6.2 / CODE G	
SLIP	5.40%	
NO LOAD CURRENT	21.6 / 10.8 / 6.2 A	
MAX. TIME LOCKED ROTOR (HOT)	20 SECONDS	
DE BEARING	6312	
ODE BEARING	6312	
REGREASING INT. - DE BEARING	12,400 HOURS (0.75 OZ.)	
REGREASING INT. - ODE BEARING	12,400 HOURS (0.64 OZ.)	
MOUNTING	F2 (F1 SUITABLE)	
ROTATION	CW / CCW	
MOMENT OF INERTIA	8.52 LB. FT. SQUARED	
C-FLANGE	---	
D-FLANGE	---	
SHAFT MATERIAL	1045 CARBON STEEL	
CONNECTION DIAGRAM	230 / 460 V - 12 LEAD Δ	
APPROX. WEIGHT	580 LBS.	
LOAD	POWER FACTOR	EFFICIENCY (%)
100%	0.87	88.1
75%	0.84	89.3
50%	0.75	89.1





WORLDWIDE ELECTRIC MOTOR DRAWING
WO-324T



MOUNTING					
E	2F1	2F2	H	BA	H
6.25	---	10.5	0.66	5.25	16

A	B	C	D	G	J	O	P
16	14	29.95	8	0.984	2.76	15.91	15.75

KEY			KEYSEAT			SHAFT			TERMINAL BOX		
T	AA	AB	ES	S	R	N-W	U	XB	XC	XD	XE
2.44	2	13.4	3.91	0.5	1.845	5.25	2.125	2.64	10.55	8.98	9.68

ALL DIMENSIONS IN INCHES