



**WORLDWIDE ELECTRIC MOTOR DATA SHEET**

**IROW150-12-449T**



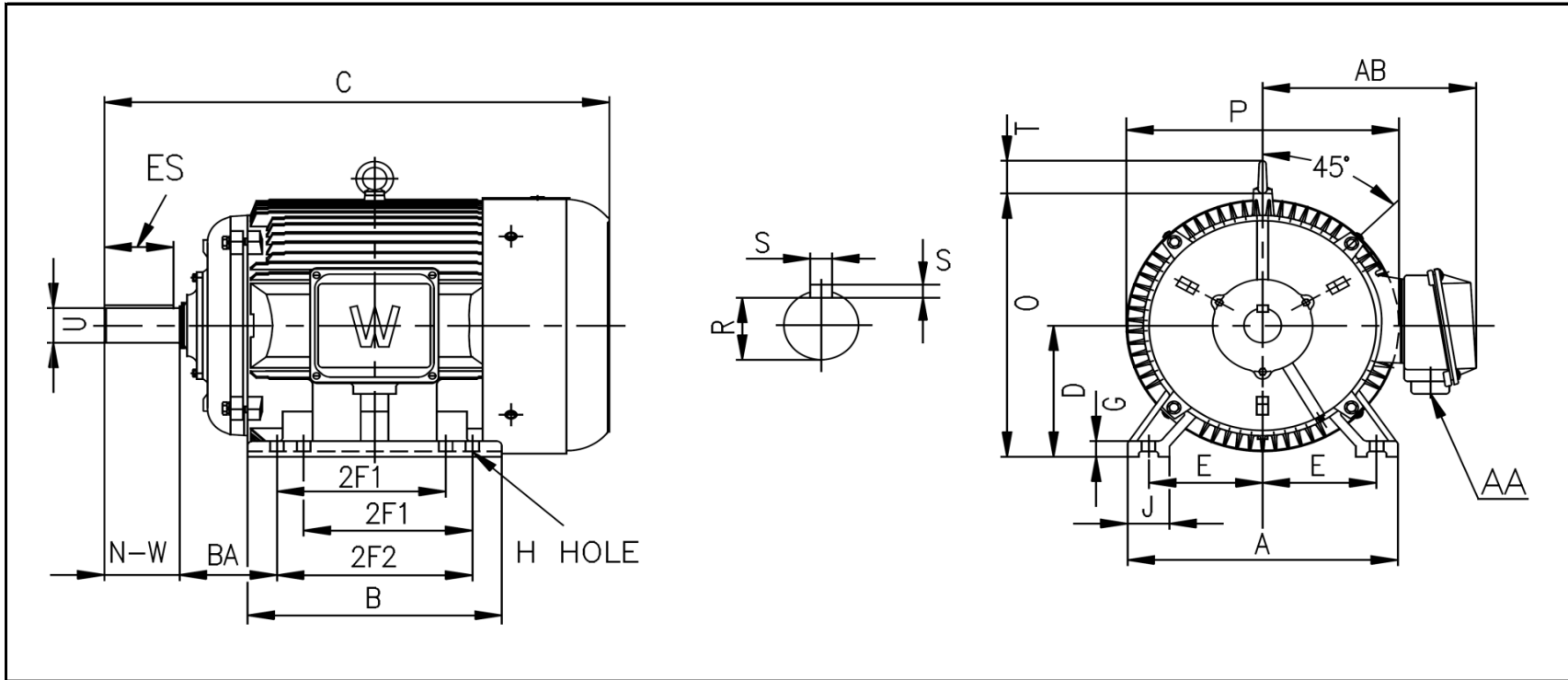
HORSEPOWER	<b>150</b>		
RPM / POLES	<b>1200 / 6</b>		
VOLTAGE / PHASE	<b>230 / 460 / 796 V / 3</b>		
FRAME	<b>449T</b>		
ENCLOSURE / DEGREE OF PROTECTION	<b>TEFC / IP54</b>		
FREQUENCY	<b>60 HZ Suitable For 50 HZ Operation With 1.0 SF</b>		
FULL LOAD SPEED	<b>1135 RPM</b>		
SERVICE FACTOR	<b>1.15</b>		
INSULATION CLASS	<b>F</b>		
FULL LOAD AMPS; 230 / 460 / 796	<b>360 / 180 / 104 A</b>		
LOCKED ROTOR AMPS (STARTING); 230 / 460 / 796	<b>2170 / 1085 A</b>		
NO LOAD CURRENT	<b>142 / 70.9 A</b>		
NEMA CODE LETTER	<b>H</b>		
EFFICIENCY / POWER FACTOR	<u>LOAD</u>	<u>EFF.</u>	<u>P.F.</u>
	<b>100%</b>	<b>89.0%</b>	<b>0.86</b>
	<b>75%</b>	<b>89.7%</b>	<b>0.82</b>
	<b>50%</b>	<b>89.4%</b>	<b>0.72</b>
DUTY CYCLE	<b>CONTINUOUS</b>		
TORQUE	<u>FULL LOAD</u>	<u>LRT</u>	<u>BDT</u>
	<b>946.6 lb.ft.</b>	<b>275%</b>	<b>275%</b>
SLIP	<b>5.40%</b>		
NEMA DESIGN	<b>D</b>		
MOMENT OF INERTIA			
MAX. TIME LOCKED ROTOR (Hot)	<b>20 Seconds</b>		
MAX. AMBIENT TEMPERATURE	<b>40° C</b>		
MAX. ELEVATION	<b>3300 Ft. Above Sea Level</b>		
TEMPERATURE RISE (At Full Load)	<b>80° C</b>		
DE BEARING	<b>NU320</b>		
ODE BEARING	<b>6320</b>		
REGREASING INT. - DE BEARING	<b>4,300 Hours</b>		
REGREASING INT. - ODE BEARING	<b>7,000 Hours</b>		
GREASE TYPE	<b>Mobil Polyrex EM</b>		
MOUNTING	<b>F2 (F1 Suitable)</b>		
ROTATION	<b>Bi-Directional</b>		
SHAFT MATERIAL	<b>1045 Carbon Steel</b>		
CONNECTION DIAGRAM	<b>230 / 460 V - 12 Lead Δ</b>		
APPROXIMATE WEIGHT	<b>2538 lbs.</b>		
INVERTER RATING	<b>10:1 CT / 20:1 VT PWM Type</b>		





WORLDWIDE ELECTRIC MOTOR DRAWING

IROW-449T



MOUNTING										
E	2F1	2F2	H	BA	A	B	C	D	G	J
9	25	---	0.81	7.5	21.96	30.98	54.15	11	1.574	3.346

O	P	T	AA	AB	KEY		KEYSEAT	SHAFT	
					ES	S	R	N-W	U
22.42	23.05	5.2	3	19.9	6.91	0.875	2.88	8.5	3.375

ALL DIMENSIONS IN INCHES