



# WORLDWIDE ELECTRIC MOTOR DATA SHEET



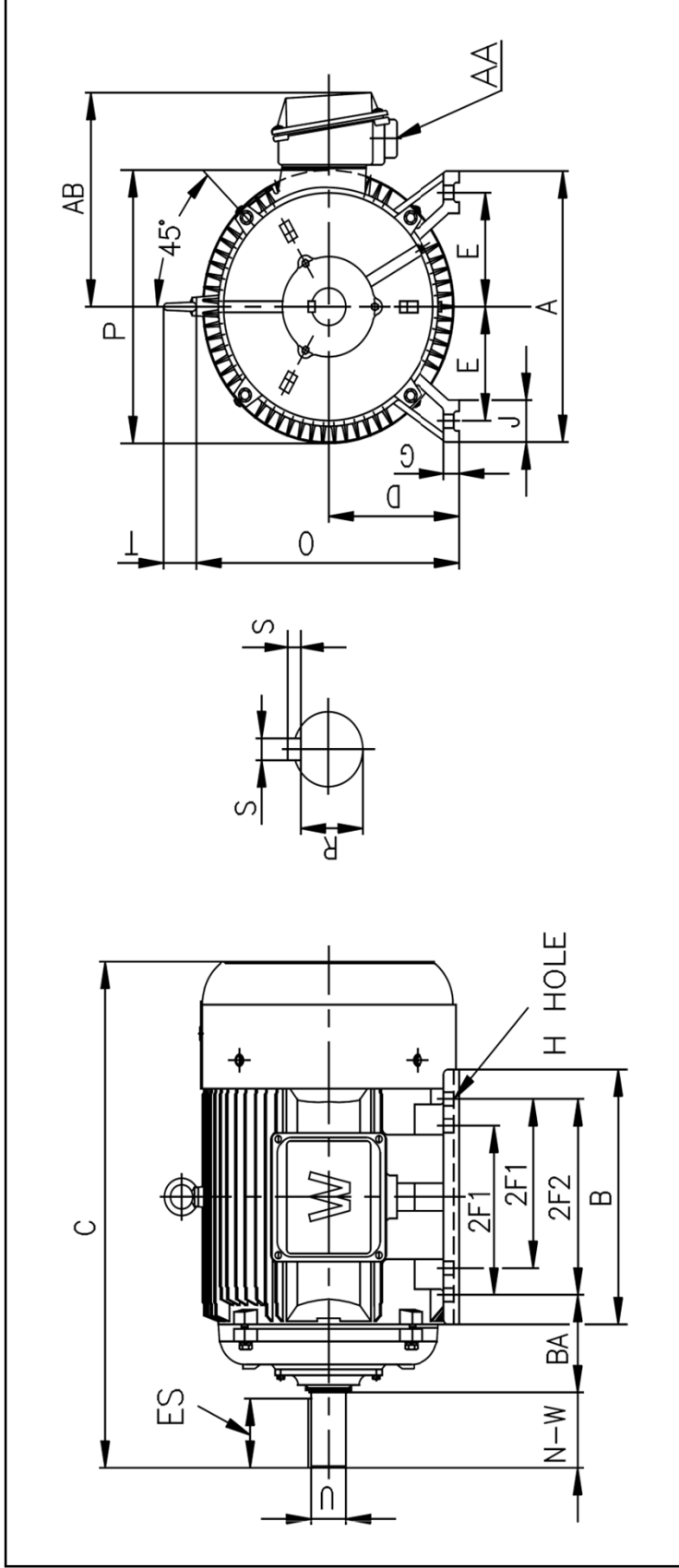
## IROW75-12-444T

HORSEPOWER	75		
RPM / POLES	1200 / 6		
VOLTAGE / PHASE	230 / 460 / 796 V / 3		
FRAME	444T		
ENCLOSURE / DEGREE OF PROTECTION	TEFC / IP54		
FREQUENCY	60 HZ Suitable For 50 HZ Operation With 1.0 SF		
FULL LOAD SPEED	1140 RPM		
SERVICE FACTOR	1.15		
INSULATION CLASS	F		
FULL LOAD AMPS; 230 / 460 / 796	185.2 / 92.6 / 53.5 A		
LOCKED ROTOR AMPS (STARTING); 230 / 460 / 796	1110 / 555 / 320.8 A		
NO LOAD CURRENT	80.0 / 40.0 / 23.1 A		
NEMA CODE LETTER	G		
EFFICIENCY / POWER FACTOR	<u>LOAD</u>	<u>EFF.</u>	<u>P.F.</u>
	100%	90.6%	0.84
	75%	91.3%	0.79
	50%	91.0%	0.68
DUTY CYCLE	CONTINUOUS		
TORQUE	<u>FULL LOAD</u>	<u>LRT</u>	<u>BDT</u>
	345.41 lb.ft.	282%	351%
SLIP	5.05%		
NEMA DESIGN	D		
MOMENT OF INERTIA	59.36 lb.ft. <sup>2</sup>		
MAX. TIME LOCKED ROTOR (Hot)	20 Seconds		
MAX. AMBIENT TEMPERATURE	40° C		
MAX. ELEVATION	3300 Ft. Above Sea Level		
TEMPERATURE RISE (At Full Load)	80° C		
DE BEARING	NU318		
ODE BEARING	6313C3		
REGREASING INT. - DE BEARING	4,300 Hours		
REGREASING INT. - ODE BEARING	7,000 Hours		
GREASE TYPE	Mobil Polyrex EM		
MOUNTING	F2 (F1 Suitable)		
ROTATION	Bi-Directional		
SHAFT MATERIAL	1045 Carbon Steel		
CONNECTION DIAGRAM	230 / 460 V - 12 Lead Δ		
APPROXIMATE WEIGHT	1431 lbs.		
INVERTER RATING	10:1 CT / 20:1 VT PWM Type		





WORLDWIDE ELECTRIC MOTOR DRAWING  
**IROW-444T**



MOUNTING			
E	2F1	H	BA
9	14.5	0.81	7.5

KEY		KEYSEAT		SHAFT	
O	P	T	AA	AB	ES
22.3	21.97	2.85	3	18.82	6.91
					S
					R
					2.88
					8.5
					3.375

ALL DIMENSIONS IN INCHES