



WORLDWIDE ELECTRIC MOTOR DATA SHEET



IOW50-12-404T

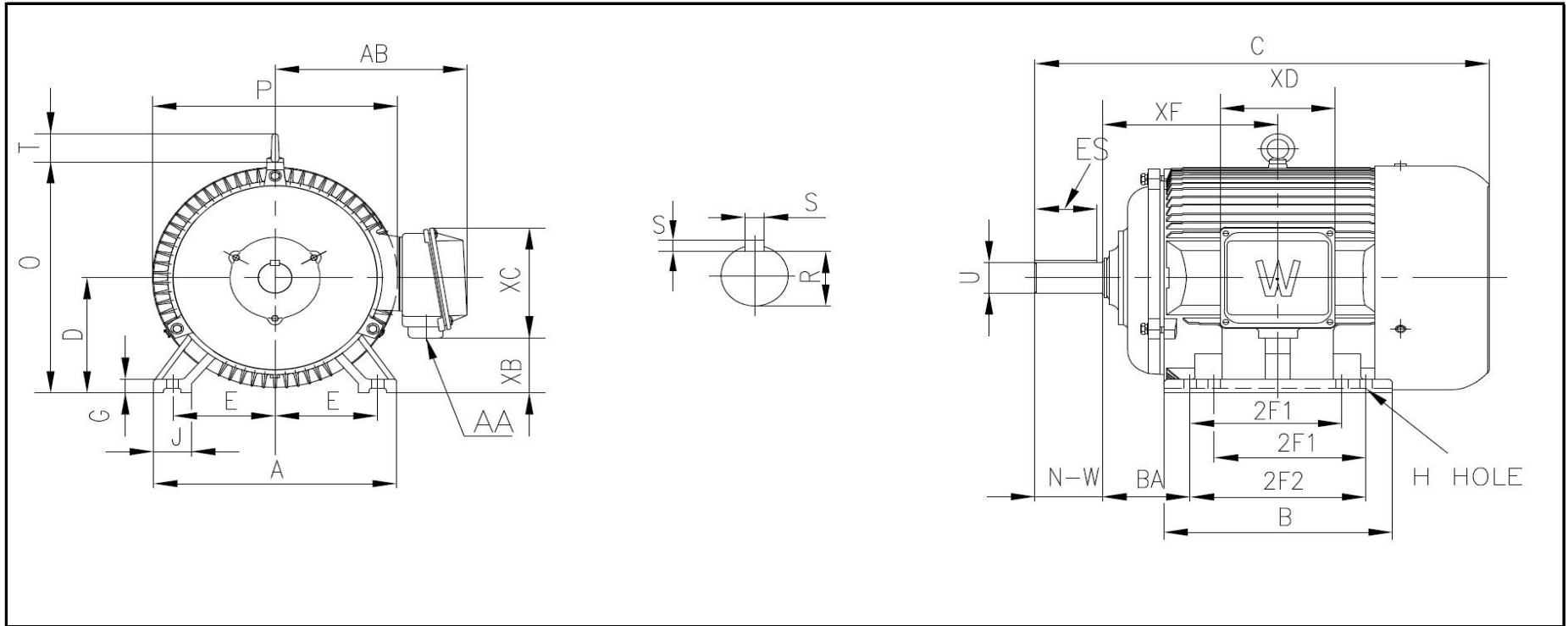
| | | | |
|---|--|-------------|-------------|
| HORSEPOWER | 50 | | |
| RPM / POLES | 1200 / 6 | | |
| VOLTAGE / PHASE | 230 / 460 / 796 V / 3 | | |
| FRAME | 404T | | |
| ENCLOSURE / DEGREE OF PROTECTION | TEFC / IP54 | | |
| FREQUENCY | 60 HZ Suitable For 50 HZ Operation With 1.0 SF | | |
| FULL LOAD SPEED | 1130 RPM | | |
| SERVICE FACTOR | 1.15 | | |
| INSULATION CLASS | F | | |
| FULL LOAD AMPS; 230 / 460 / 796 | 122 / 61.2 / 35.3 A | | |
| LOCKED ROTOR AMPS (STARTING); 230 / 460 / 796 | 725 / 362.5 / 209 A | | |
| NO LOAD CURRENT | 36 / 18 / 10.4 A | | |
| NEMA CODE LETTER | G | | |
| EFFICIENCY / POWER FACTOR | <u>LOAD</u> | <u>EFF.</u> | <u>P.F.</u> |
| | 100% | 88.0% | 0.87 |
| | 75% | 89.1% | 0.82 |
| | 50% | 89.3% | 0.72 |
| DUTY CYCLE | CONTINUOUS | | |
| TORQUE | <u>FULL LOAD</u> | <u>LRT</u> | <u>BDT</u> |
| | 232 lb.ft. | 330% | 300% |
| | 6.30% | | |
| SLIP | 6.30% | | |
| NEMA DESIGN | D | | |
| MOMENT OF INERTIA | 41.1 lb.ft. ² | | |
| MAX. TIME LOCKED ROTOR (Hot) | 5 Seconds | | |
| MAX. AMBIENT TEMPERATURE | 40° C | | |
| MAX. ELEVATION | 3300 Ft. Above Sea Level | | |
| TEMPERATURE RISE (At Full Load) | 80° C | | |
| DE BEARING | NU316 | | |
| ODE BEARING | 6313C3 | | |
| REGREASING INT. - DE BEARING | 4,400 Hours | | |
| REGREASING INT. - ODE BEARING | 12,200 Hours | | |
| GREASE TYPE | Mobil Polyrex EM | | |
| MOUNTING | F2 | | |
| ROTATION | Bi-Directional | | |
| SHAFT MATERIAL | 1045 Carbon Steel | | |
| CONNECTION DIAGRAM | 230 / 460 / 796 V - 12 Lead Δ | | |
| APPROXIMATE WEIGHT | 1035 lbs. | | |
| INVERTER RATING | 10:1 CT / 20:1 VT PWM Type | | |





WORLDWIDE ELECTRIC MOTOR DRAWING

IOW-404T



DIMENSIONS - INCHES

| MOUNTING | | | | | A | B | C | D | G | J | P | O | T | AB |
|----------|-----|-------|------|------|----|------|-------|----|------|------|-------|-------|------|-------|
| E | 2F1 | 2F2 | H | BA | | | | | | | | | | |
| 8 | --- | 12.25 | 0.81 | 6.62 | 20 | 16.2 | 36.81 | 10 | 1.18 | 3.15 | 21.42 | 21.02 | 2.83 | 18.31 |

| KEY | | KEYSET | SHAFT | | TERMINAL BOX | | | | |
|------|------|--------|-------|-------|--------------|------|-------|------|--------|
| S | ES | R | N-W | U | AA | XB | XC | XD | XF |
| 0.75 | 5.65 | 2.45 | 7.25 | 2.875 | 3 | 4.57 | 11.73 | 9.76 | 12.745 |

REVISED - 02/01/16