



WORLDWIDE ELECTRIC MOTOR DATA SHEET



IROW50-12-404T

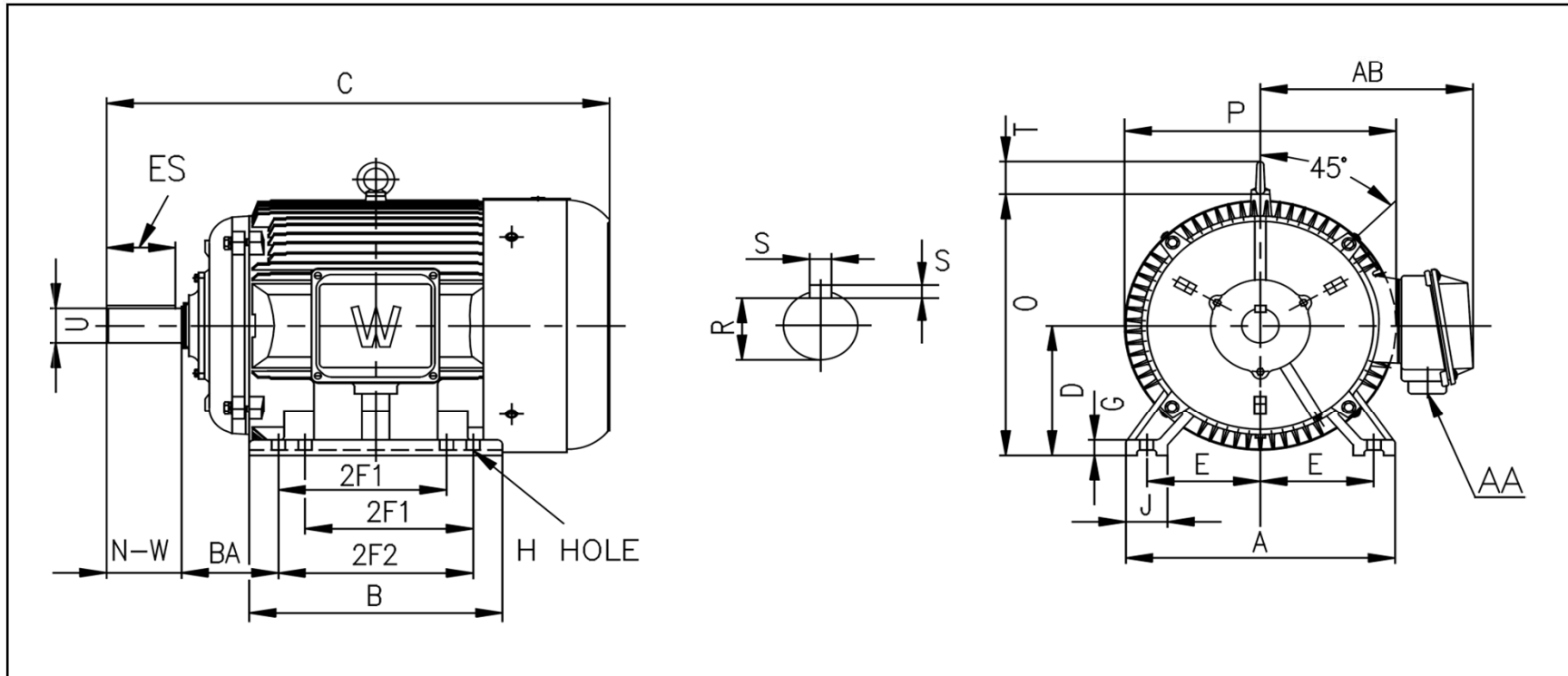
HORSEPOWER	50		
RPM / POLES	1200 / 6		
VOLTAGE / PHASE	230 / 460 / 796 V / 3		
FRAME	404T		
ENCLOSURE / DEGREE OF PROTECTION	TEFC / IP54		
FREQUENCY	60 HZ Suitable For 50 HZ Operation With 1.0 SF		
FULL LOAD SPEED	1130 RPM		
SERVICE FACTOR	1.15		
INSULATION CLASS	F		
FULL LOAD AMPS; 230 / 460 / 796	123 / 61.5 / 35.5 A		
LOCKED ROTOR AMPS (STARTING); 230 / 460 / 796	736 / 368 / 212 A		
NO LOAD CURRENT	52.0 / 26.0 / 15.0 A		
NEMA CODE LETTER	G		
EFFICIENCY / POWER FACTOR	<u>LOAD</u>	<u>EFF.</u>	<u>P.F.</u>
	100%	89.9%	0.85
	75%	90.6%	0.80
	50%	90.4%	0.69
DUTY CYCLE	CONTINUOUS		
TORQUE	<u>FULL LOAD</u>	<u>LRT</u>	<u>BDT</u>
	232.3 lb.ft.	309%	365%
SLIP	5.64%		
NEMA DESIGN	D		
MOMENT OF INERTIA	30.65 lb.ft. ²		
MAX. TIME LOCKED ROTOR (Hot)	20 Seconds		
MAX. AMBIENT TEMPERATURE	40° C		
MAX. ELEVATION	3300 Ft. Above Sea Level		
TEMPERATURE RISE (At Full Load)	80° C		
DE BEARING	NU317		
ODE BEARING	6313C3		
REGREASING INT. - DE BEARING	5,000 Hours		
REGREASING INT. - ODE BEARING	7,000 Hours		
GREASE TYPE	Mobil Polyrex EM		
MOUNTING	F1 (F2 Suitable)		
ROTATION	Bi-Directional		
SHAFT MATERIAL	1045 Carbon Steel		
CONNECTION DIAGRAM	230 / 460 V - 12 Lead Δ		
APPROXIMATE WEIGHT	995 lbs.		
INVERTER RATING	10:1 CT / 20:1 VT PWM Type		





WORLDWIDE ELECTRIC MOTOR DRAWING

IROW-404T



MOUNTING					A	B	C	D	G	J
E	2F1	2F2	H	BA						
8	12.25	13.75	0.81	6.62	19.055	17.716	38.66	10	1.338	3.15

O	P	T	AA	AB	KEY		KEYSEAT	SHAFT	
					ES	S	R	N-W	U
20.2	19.527	2.46	3	17.716	5.65	0.75	2.45	7.25	2.875

ALL DIMENSIONS IN INCHES