



WORLDWIDE ELECTRIC MOTOR DATA SHEET



IOW30-12-326T

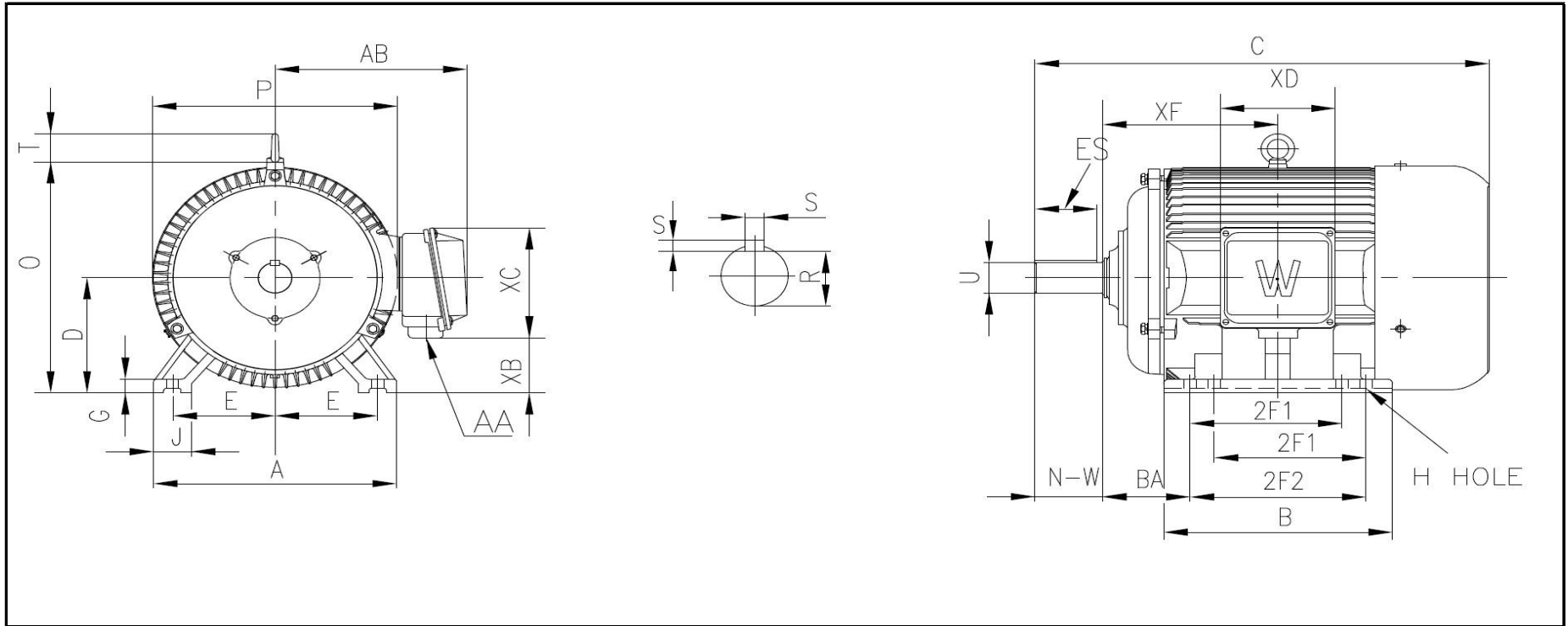
HORSEPOWER	30		
RPM / POLES	1200 / 6		
VOLTAGE / PHASE	230 / 460 / 796 V / 3		
FRAME	326T		
ENCLOSURE / DEGREE OF PROTECTION	TEFC / IP54		
FREQUENCY	60 HZ Suitable For 50 HZ Operation With 1.0 SF		
FULL LOAD SPEED	1135 RPM		
SERVICE FACTOR	1.15		
INSULATION CLASS	F		
FULL LOAD AMPS; 230 / 460 / 796	74.7 / 37.3 / 21.5 A		
LOCKED ROTOR AMPS (STARTING); 230 / 460 / 796	435 / 217.5 / 125.6 A		
NO LOAD CURRENT	29 / 14.5 / 8.37 A		
NEMA CODE LETTER	G		
EFFICIENCY / POWER FACTOR	<u>LOAD</u>	<u>EFF.</u>	<u>P.F.</u>
	100%	88.5%	0.85
	75%	89.2%	0.79
	50%	88.9%	0.69
DUTY CYCLE	CONTINUOUS		
TORQUE	<u>FULL LOAD</u>	<u>LRT</u>	<u>BDT</u>
	139 lb.ft.	350%	320%
SLIP	5.40%		
NEMA DESIGN	D		
MOMENT OF INERTIA	10.1 lb.ft. ²		
MAX. TIME LOCKED ROTOR (Hot)	6 Seconds		
MAX. AMBIENT TEMPERATURE	40° C		
MAX. ELEVATION	3300 Ft. Above Sea Level		
TEMPERATURE RISE (At Full Load)	80° C		
DE BEARING	6312		
ODE BEARING	6312		
REGREASING INT. - DE BEARING	12,400 Hours		
REGREASING INT. - ODE BEARING	12,400 Hours		
GREASE TYPE	Mobil Polyrex EM		
MOUNTING	F2		
ROTATION	Bi-Directional		
SHAFT MATERIAL	1045 Carbon Steel		
CONNECTION DIAGRAM	230 / 460 / 796 V - 12 Lead Δ		
APPROXIMATE WEIGHT	610 lbs.		
INVERTER RATING	10:1 CT / 20:1 VT PWM Type		





WORLDWIDE ELECTRIC MOTOR DRAWING

IOW-326T



DIMENSIONS - INCHES

MOUNTING					A	B	C	D	G	J	P	O	T	AB
E	2F1	2F2	H	BA										
6.25	10.5	12	0.66	5.25	16	15.5	31.3	8	0.984	2.76	15.75	15.91	2.44	13.4

KEY		KEYSET	SHAFT		TERMINAL BOX				
S	ES	R	N-W	U	AA	XB	XC	XD	XF
0.5	3.91	1.845	5.25	2.125	2	2.64	10.55	8.98	11.25

REVISED - 02/01/16