



**WORLDWIDE ELECTRIC MOTOR DATA SHEET**



**IROW30-12-326T**

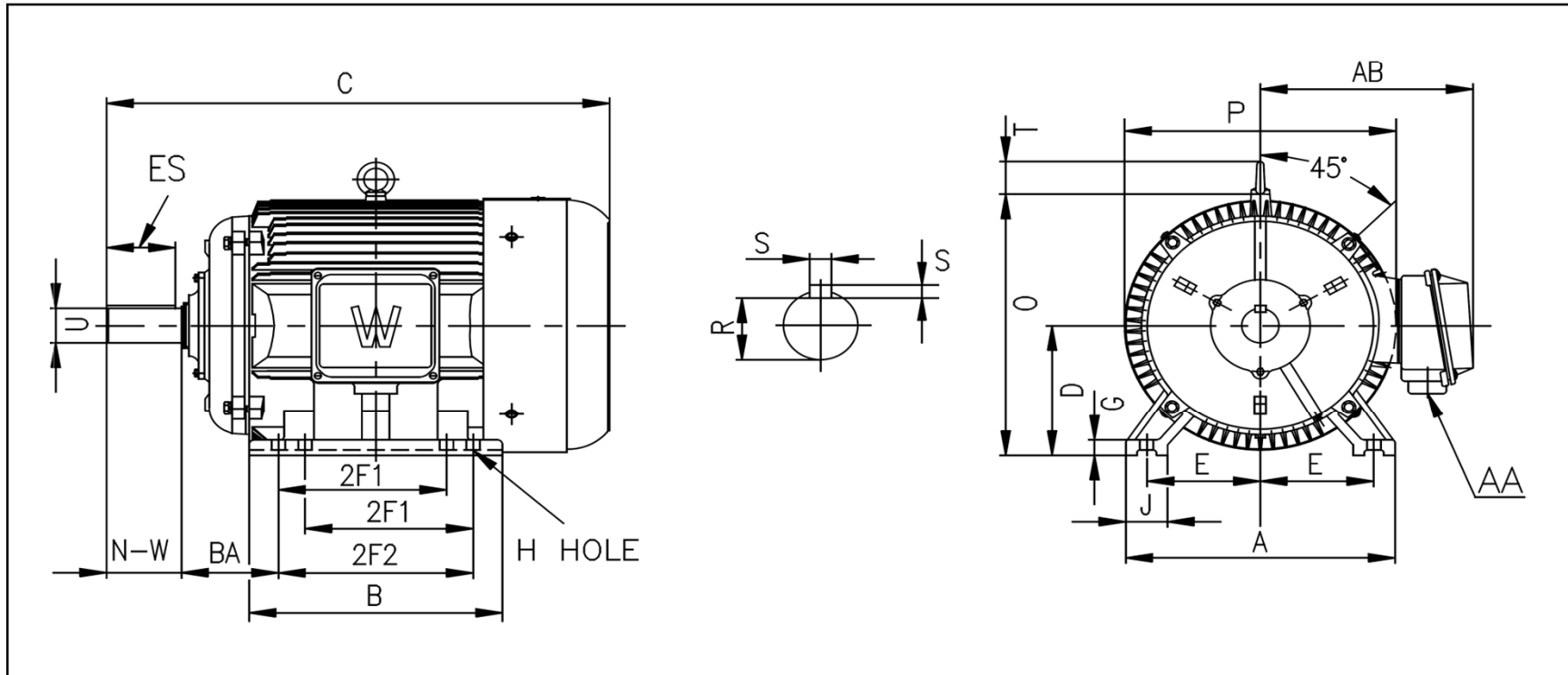
HORSEPOWER	<b>30</b>		
RPM / POLES	<b>1200 / 6</b>		
VOLTAGE / PHASE	<b>230 / 460 / 796 V / 3</b>		
FRAME	<b>326T</b>		
ENCLOSURE / DEGREE OF PROTECTION	<b>TEFC / IP54</b>		
FREQUENCY	<b>60 HZ Suitable For 50 HZ Operation With 1.0 SF</b>		
FULL LOAD SPEED	<b>1110 RPM</b>		
SERVICE FACTOR	<b>1.15</b>		
INSULATION CLASS	<b>F</b>		
FULL LOAD AMPS; 230 / 460 / 796	<b>78.0 / 39.0 / 22.5 A</b>		
LOCKED ROTOR AMPS (STARTING); 230 / 460 / 796	<b>468 / 234 / 135 A</b>		
NO LOAD CURRENT	<b>35.6 / 17.8 / 10.3 A</b>		
NEMA CODE LETTER	<b>G</b>		
EFFICIENCY / POWER FACTOR	<u>LOAD</u>	<u>EFF.</u>	<u>P.F.</u>
	<b>100%</b>	<b>87.7%</b>	<b>0.83</b>
	<b>75%</b>	<b>89.0%</b>	<b>0.77</b>
	<b>50%</b>	<b>89.0%</b>	<b>0.65</b>
DUTY CYCLE	<b>CONTINUOUS</b>		
TORQUE	<u>FULL LOAD</u>	<u>LRT</u>	<u>BDT</u>
	<b>142.9 lb.ft.</b>	<b>298%</b>	<b>325%</b>
SLIP	<b>7.35%</b>		
NEMA DESIGN	<b>D</b>		
MOMENT OF INERTIA	<b>11.46 lb.ft.<sup>2</sup></b>		
MAX. TIME LOCKED ROTOR (Hot)	<b>20 Seconds</b>		
MAX. AMBIENT TEMPERATURE	<b>40° C</b>		
MAX. ELEVATION	<b>3300 Ft. Above Sea Level</b>		
TEMPERATURE RISE (At Full Load)	<b>80° C</b>		
DE BEARING	<b>6312</b>		
ODE BEARING	<b>6312</b>		
REGREASING INT. - DE BEARING	<b>7,000 Hours</b>		
REGREASING INT. - ODE BEARING	<b>7,000 Hours</b>		
GREASE TYPE	<b>Mobil Polyrex EM</b>		
MOUNTING	<b>F2 (F1 Suitable)</b>		
ROTATION	<b>Bi-Directional</b>		
SHAFT MATERIAL	<b>1045 Carbon Steel</b>		
CONNECTION DIAGRAM	<b>230 / 460 V - 12 Lead Δ</b>		
APPROXIMATE WEIGHT	<b>667 lbs.</b>		
INVERTER RATING	<b>10:1 CT / 20:1 VT PWM Type</b>		





WORLDWIDE ELECTRIC MOTOR DRAWING

IROW-326T



MOUNTING					A	B	C	D	G	J
E	2F1	2F2	H	BA						
6.25	10.5	12	0.66	5.25	15.275	13.9	31.02	8	0.984	2.76

		KEY		KEYSEAT	SHAFT				
O	P	T	AA	AB	ES	S	R	N-W	U
16.27	15.74	2.46	2	12.795	3.91	0.5	1.845	5.25	2.125

ALL DIMENSIONS IN INCHES