



# WORLDWIDE ELECTRIC MOTOR DATA SHEET



## IROW15-12-284T

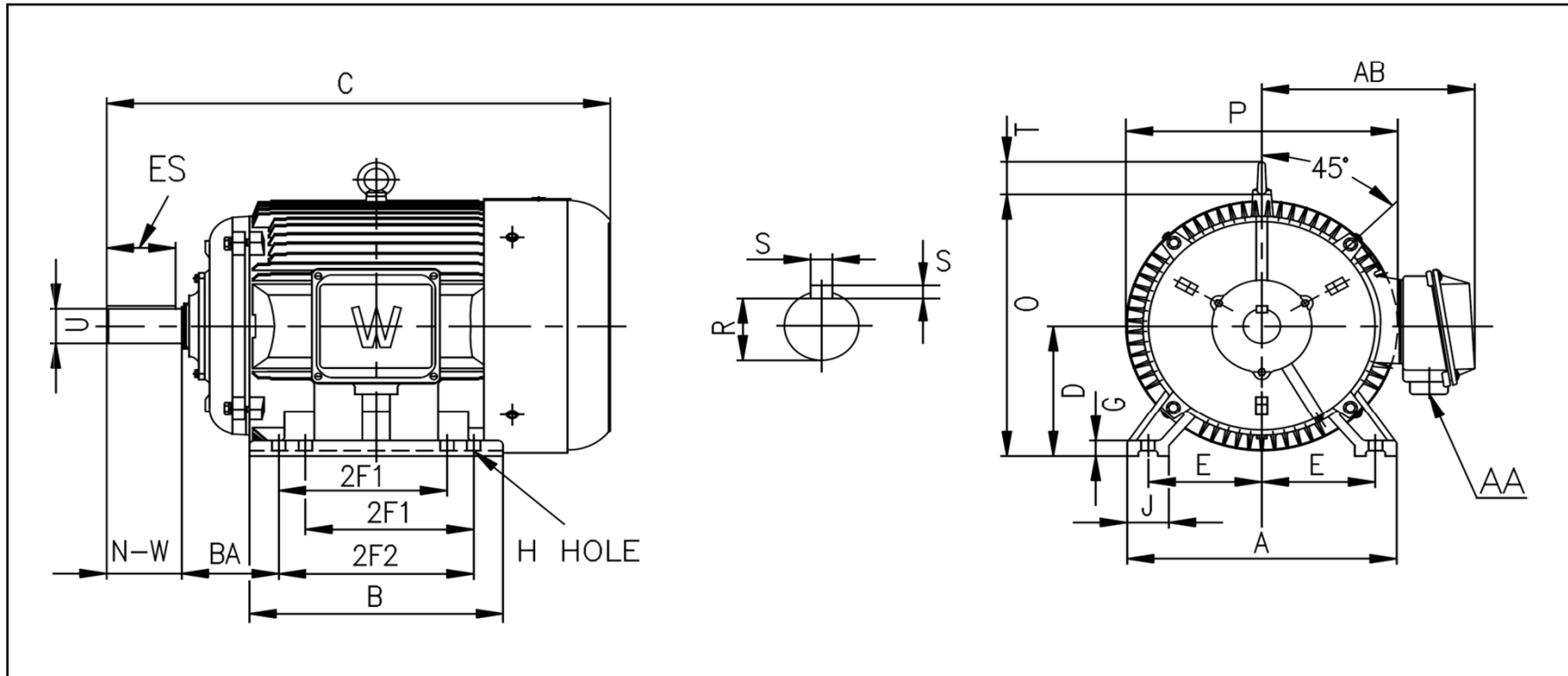
HORSEPOWER	15		
RPM / POLES	1200 / 6		
VOLTAGE / PHASE	230 / 460 / 796 V / 3		
FRAME	284T		
ENCLOSURE / DEGREE OF PROTECTION	TEFC / IP54		
FREQUENCY	60 HZ Suitable For 50 HZ Operation With 1.0 SF		
FULL LOAD SPEED	1120 RPM		
SERVICE FACTOR	1.15		
INSULATION CLASS	F		
FULL LOAD AMPS; 230 / 460 / 796	41.3 / 20.7 / 12.0 A		
LOCKED ROTOR AMPS (STARTING); 230 / 460 / 796	232 / 116 / 67.1 A		
NO LOAD CURRENT	21.2 / 10.6 / 6.1 A		
NEMA CODE LETTER	G		
EFFICIENCY / POWER FACTOR	<u>LOAD</u>	<u>EFF.</u>	<u>P.F.</u>
	100%	87.7%	0.78
	75%	88.5%	0.70
	50%	88.0%	0.57
DUTY CYCLE	CONTINUOUS		
TORQUE	<u>FULL LOAD</u>	<u>LRT</u>	<u>BDT</u>
	70.3 lb.ft.	299%	349%
SLIP	6.91%		
NEMA DESIGN	D		
MOMENT OF INERTIA	5.92 lb.ft. <sup>2</sup>		
MAX. TIME LOCKED ROTOR (Hot)	20 Seconds		
MAX. AMBIENT TEMPERATURE	40° C		
MAX. ELEVATION	3300 Ft. Above Sea Level		
TEMPERATURE RISE (At Full Load)	80° C		
DE BEARING	6311		
ODE BEARING	6311		
REGREASING INT. - DE BEARING	8,000 Hours		
REGREASING INT. - ODE BEARING	8,000 Hours		
GREASE TYPE	Mobil Polyrex EM		
MOUNTING	F2 (F1 Suitable)		
ROTATION	Bi-Directional		
SHAFT MATERIAL	1045 Carbon Steel		
CONNECTION DIAGRAM	230 / 460 V - 12 Lead Δ		
APPROXIMATE WEIGHT	416 lbs.		
INVERTER RATING	10:1 CT / 20:1 VT PWM Type		





WORLDWIDE ELECTRIC MOTOR DRAWING

IROW-284T



MOUNTING					A	B	C	D	G	J
E	2F1	2F2	H	BA						
5.5	9.5	11	0.53	4.75	13.8	13.11	28.346	7	0.866	2.76

		KEY		KEYSEAT	SHAFT				
O	P	T	AA	AB	ES	S	R	N-W	U
14.84	14.49	2.063	1.5	11.61	3.28	0.5	1.591	4.62	1.875

ALL DIMENSIONS IN INCHES