



WORLDWIDE ELECTRIC MOTOR DATA SHEET



IROW10-12-256T

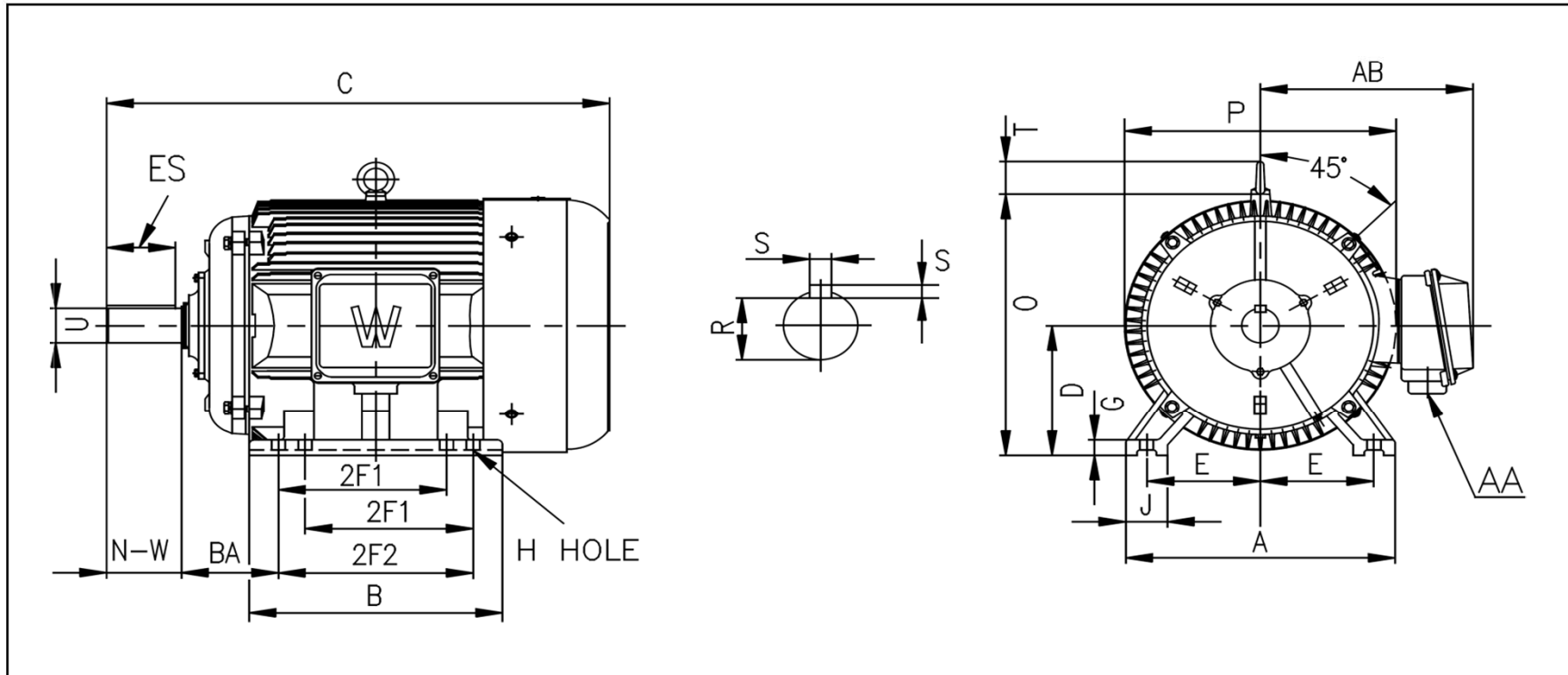
HORSEPOWER	10		
RPM / POLES	1200 / 6		
VOLTAGE / PHASE	230 / 460 / 796 V / 3		
FRAME	256T		
ENCLOSURE / DEGREE OF PROTECTION	TEFC / IP54		
FREQUENCY	60 HZ Suitable For 50 HZ Operation With 1.0 SF		
FULL LOAD SPEED	1120 RPM		
SERVICE FACTOR	1.15		
INSULATION CLASS	F		
FULL LOAD AMPS; 230 / 460 / 796	29.0 / 14.5 / 8.4 A		
LOCKED ROTOR AMPS (STARTING); 230 / 460 / 796	159.6 / 79.8 / 46.1 A		
NO LOAD CURRENT	13.2 / 6.6 / 3.8 A		
NEMA CODE LETTER	H		
EFFICIENCY / POWER FACTOR	<u>LOAD</u>	<u>EFF.</u>	<u>P.F.</u>
	100%	86.6%	0.75
	75%	87.2%	0.69
	50%	86.2%	0.56
DUTY CYCLE	CONTINUOUS		
TORQUE	<u>FULL LOAD</u>	<u>LRT</u>	<u>BDT</u>
	46.9 lb.ft.	288%	275%
SLIP	6.88%		
NEMA DESIGN	D		
MOMENT OF INERTIA	2.52 lb.ft. ²		
MAX. TIME LOCKED ROTOR (Hot)	20 Seconds		
MAX. AMBIENT TEMPERATURE	40° C		
MAX. ELEVATION	3300 Ft. Above Sea Level		
TEMPERATURE RISE (At Full Load)	80° C		
DE BEARING	6309		
ODE BEARING	6309		
REGREASING INT. - DE BEARING	8,000 Hours		
REGREASING INT. - ODE BEARING	8,000 Hours		
GREASE TYPE	Mobil Polyrex EM		
MOUNTING	F2 (F1 Suitable)		
ROTATION	Bi-Directional		
SHAFT MATERIAL	1045 Carbon Steel		
CONNECTION DIAGRAM	230 / 460 V - 12 Lead Δ		
APPROXIMATE WEIGHT	322 lbs.		
INVERTER RATING	10:1 CT / 20:1 VT PWM Type		





WORLDWIDE ELECTRIC MOTOR DRAWING

IROW-256T



MOUNTING					A	B	C	D	G	J
E	2F1	2F2	H	BA						
5	8.25	10	0.53	4.25	12.48	12.2	25.43	6.25	0.787	2.76

O	P	T	AA	AB	KEY		KEYSEAT	SHAFT	
					ES	S	R	N-W	U
13.32	12.992	2.063	1.5	10.78	2.91	0.375	1.416	4	1.625

ALL DIMENSIONS IN INCHES