



WORLDWIDE ELECTRIC MOTOR DATA SHEET



NT34-18-56CB

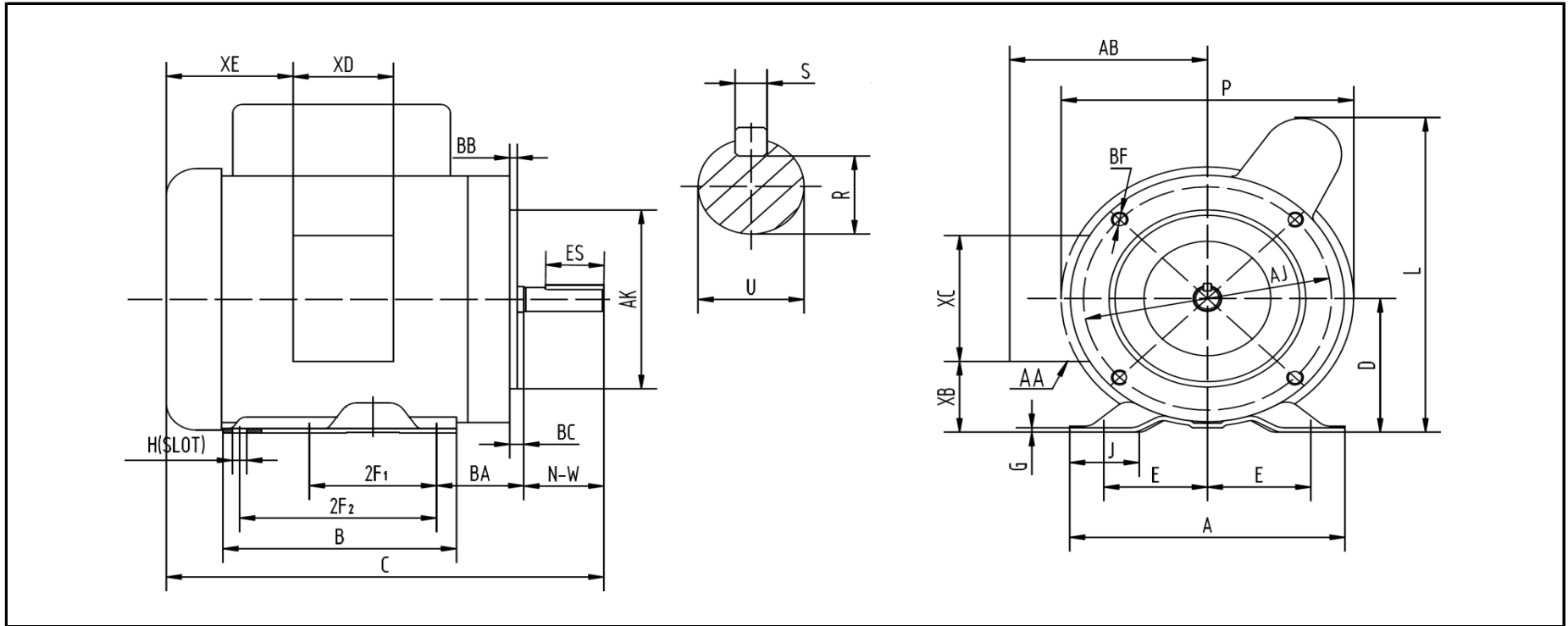
| | | | |
|---------------------------------------|--------------------------------|----------------------|-------------|
| HORSEPOWER | 3/4 (1/2) | | |
| RPM / POLES | 1800 / 4 (1500 / 4) | | |
| VOLTAGE / PHASE | 115/230 V / 1 (110/220 V / 1) | | |
| FRAME | 56C | | |
| ENCLOSURE / DEGREE OF PROTECTION | TEFC / IP43 | | |
| FREQUENCY | 60 HZ (50 HZ) | | |
| FULL LOAD SPEED | 1725 RPM (1425 RPM) | | |
| SERVICE FACTOR | 1.15 (1.0) | | |
| INSULATION CLASS | F | | |
| FULL LOAD AMPS; 115 / 230 (110 / 220) | 10.0 / 5.0 A (9.6 / 4.8 A) | | |
| EFFICIENCY / POWER FACTOR | <u>LOAD</u> | <u>EFF.</u> | <u>P.F.</u> |
| | 100% | 67.0% | 0.71 |
| DUTY CYCLE | Continuous | | |
| MAX. AMBIENT TEMPERATURE | 40° C | | |
| MAX. ELEVATION | 3300 Ft. Above Sea Level | | |
| TEMPERATURE RISE (At Full Load) | 80° C | | |
| DE BEARING | 6203 | | |
| ODE BEARING | 6203 | | |
| REGREASING INT. - DE BEARING | --- | | |
| REGREASING INT. - ODE BEARING | --- | | |
| GREASE TYPE | Mobil Polyrex EM | | |
| MOUNTING | F1 | | |
| ROTATION | Bi-Directional | | |
| CONNECTION DIAGRAM | 115/230 V (110/220 V) - 6 Lead | | |
| APPROXIMATE WEIGHT | 29 lbs. | | |
| INVERTER RATING | --- | | |
| OPTIONS / ACCESSORIES | Base | NBASE56-2 | |
| | Capacitor (Start) | NSC56-3 (500UF/165V) | |
| | Capacitor (Run) | --- | |
| | Capacitor Cover (Start) | NSCCOVER56 | |
| | Capacitor Cover (Run) | --- | |
| | Centrifugal Switch | NCSWITCH56 | |
| | Endbell (DE) | NDEEBELL56-1 | |
| | Endbell (ODE) | NODEEBELL56 | |
| | Fan | NFAN56 | |
| | Fan Cover | NFCOVER56 | |
| Junction Box | NJBOX56 | | |
| Stationary Switch | NSSWITCH56 | | |





WORLDWIDE ELECTRIC MOTOR DRAWING

NT34-18-56CB



DIMENSIONS - INCHES

| MOUNTING | | | | | A | B | C | D | G | J | L | P | AB | BC |
|----------|-----|-----|------|------|------|------|------|-----|-----|------|-----|-----|-----|-------|
| E | 2F1 | 2F2 | H | BA | | | | | | | | | | |
| 2.44 | 3 | 5 | 0.34 | 2.75 | 6.54 | 6.54 | 12.4 | 3.5 | 0.1 | 1.65 | 8.2 | 7.3 | 5.2 | -0.19 |

| KEY | | KEYSET | FLANGE | | | | SHAFT | | | TERMINAL BOX | | | | |
|-------|------|--------|--------|-------|--------|------|-------|-------|------------------|--------------|-----|-----|------|--|
| S | ES | R | AK | AJ | BF | BB | N-W | U | AA | XB | XC | XD | XE | |
| 0.188 | 1.41 | 0.517 | 4.5 | 5.875 | 3/8-16 | 0.16 | 1.88 | 0.625 | 3-0.88 / 2-1.109 | 1.65 | 3.7 | 3.2 | 2.15 | |