



WORLDWIDE ELECTRIC MOTOR DATA SHEET

PEWWE250-18-505Z



HORSEPOWER	250		
RPM / POLES	1800 / 4		
VOLTAGE / PHASE	460 V / 3		
FRAME	505Z		
ENCLOSURE / DEGREE OF PROTECTION	TEFC / IP54		
FREQUENCY	60 HZ		
FULL LOAD SPEED	1790 RPM		
SERVICE FACTOR	1.15		
INSULATION CLASS	F		
FULL LOAD AMPS	280 A		
LOCKED ROTOR AMPS (STARTING)	1825 A		
NO LOAD CURRENT	93.0 A		
NEMA CODE LETTER	G		
EFFICIENCY / POWER FACTOR	<u>LOAD</u>	<u>EFF.</u>	<u>P.F.</u>
	100%	96.2%	0.87
	75%	96.2%	0.84
	50%	95.8%	0.75
DUTY CYCLE	CONTINUOUS		
TORQUE	<u>FULL LOAD</u>	<u>LRT</u>	<u>BDT</u>
	1027 lb.ft.	200%	280%
SLIP	0.56%		
NEMA DESIGN	B		
MOMENT OF INERTIA	73.6 lb.ft. ²		
SOUND PRESSURE LEVEL	93 dB(A)		
MAX. TIME LOCKED ROTOR (Hot)	13 Seconds		
MAX. AMBIENT TEMPERATURE	40° C		
MAX. ELEVATION	3300 Ft. Above Sea Level		
TEMPERATURE RISE (At Full Load)	80° C		
DE BEARING	NU322 C3		
ODE BEARING	6319 C3		
REGREASING INT. - DE BEARING	1,300 Hours		
REGREASING INT. - ODE BEARING	2,000 Hours		
GREASE TYPE	Mobil Polyrex EM		
MOUNTING	F1		
ROTATION	Bi-Directional		
SHAFT MATERIAL	4140 Carbon Steel		
CONNECTION DIAGRAM	460 V - 6 Lead Δ		
APPROXIMATE WEIGHT	2360 lbs.		
INVERTER RATING	3:1 CT / 6:1 VT PWM Type		



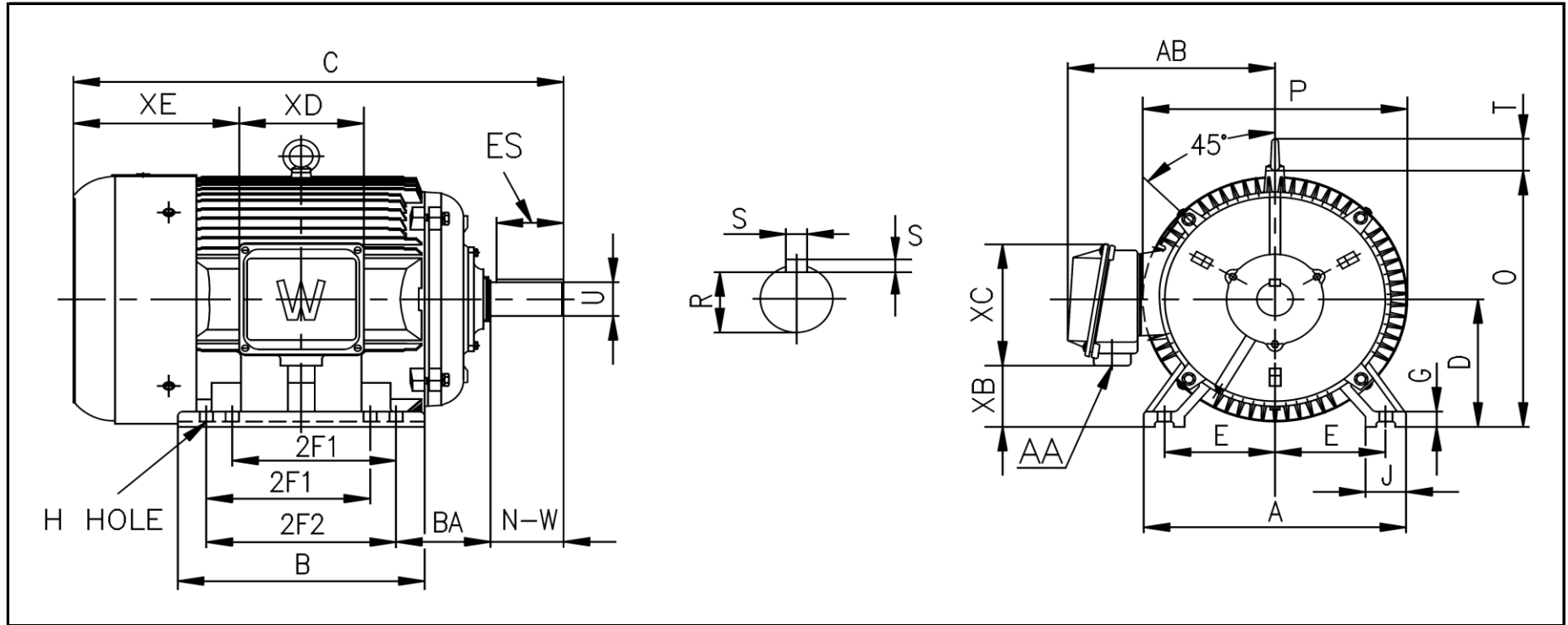
CC006A





WORLDWIDE ELECTRIC MOTOR DRAWING

PEWWE-505Z



DIMENSIONS - INCHES

MOUNTING					A	B	C	D	G	J	P	O	T	AB
E	2F1	2F2	H	BA										
10	16	18	0.94	8.5	24.72	26	54	12.5	1.87	4.72	25	25.3	4.25	21

KEY		KEYSET	SHAFT		TERMINAL BOX				
S	ES	R	N-W	U	AA	XB	XC	XD	XE
0.875	9	3.134	10.625	3.625	2 x 3"	5	13.8	11.8	---